

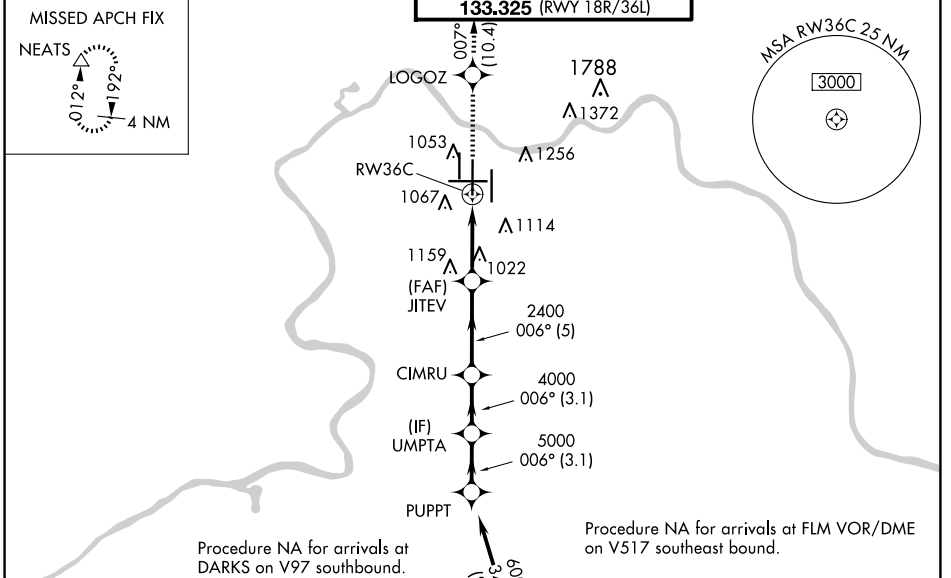
WAAS CH 97609 W36B	APP CRS 006°	Rwy Idg 11000 TDZE 850 Apt Elev 896
--	------------------------	--

RNAV (GPS) Y RWY 36C

CINCINNATI/NORTHERN KENTUCKY INTL (CVG)

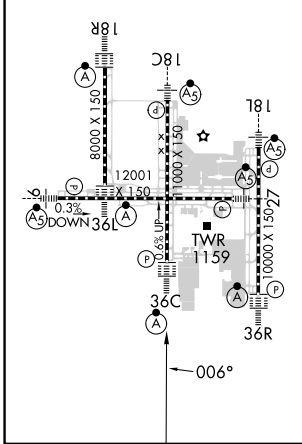
RNP APCH - GPS.	ALSF-2	MISSED APPROACH: Climb to 3000 direct LOGOZ and on track 007° to NEATS and hold.
<p>▼ For uncompensated Baro-VNAV systems, LNAV/VNAV NA below -16°C or above 54°C. Simultaneous approach authorized with Rwy 36L/R. LNAV procedure NA during simultaneous operations. Use of FD or AP providing RNAV track guidance required during simultaneous operations.</p>		

D-ATIS ARR 134.375 DEP 135.3	CINCINNATI APP CON 119.7 363.15 (090°-269°) 123.875 363.15 (270°-089°)	CINCINNATI TOWER 118.975 360.85 (RWY 18L/36R) 118.3 (RWYS 18C/36C, 09/27) 133.325 (RWY 18R/36L)	GND CON 121.7	CLNC DEL 127.175	CPDLC
---	--	---	-------------------------	----------------------------	-------



ELEV 896	D	TDZE 850
-----------------	----------	-----------------

HIRL all Rwys
TDZ/CL all Rwys except 27



3000	LOGOZ	tr 007°	NEATS	VGSI and RNAV glidepath not coincident (VGSI Angle 3.00/TCH 77).
				PUPPT
				UMPTA
				006° 6000
				GP 3.00° TCH 52
CATEGORY	A	B	C	D
LPV DA		1050/18	200 (200-½)	
LNAV/VNAV DA		1346/50	496 (500-1)	
LNAV MDA	1400/24	550 (600-½)	1400/60	549 (600-1¼)
<input checked="" type="checkbox"/> CIRCLING	1460-1	564 (600-1)	1560-1¾ 664 (700-1¾)	1560-2 664 (700-2)

SE-1, 20 FEB 2025 to 20 MAR 2025

SE-1, 20 FEB 2025 to 20 MAR 2025