

WAAS CH 49099 W36A	APP CRS 006°	Rwy Idg TDZE Apt Elev	8000 873 896
--	------------------------	-----------------------------	---

RNAV (GPS) Y RWY 36L

CINCINNATI/NORTHERN KENTUCKY INTL (CVG)

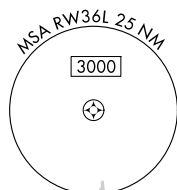
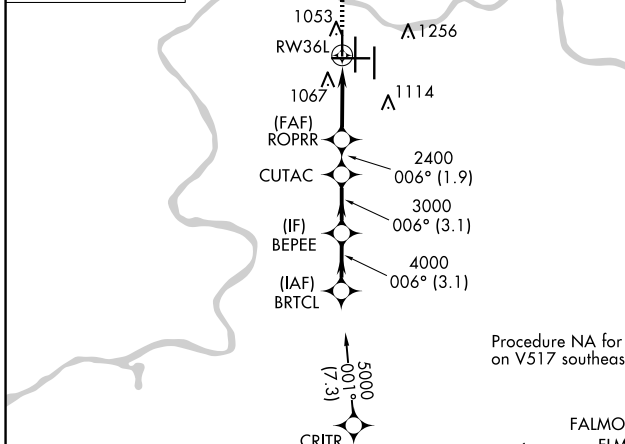
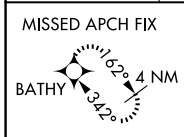
RNP APCH - GPS.

▼ For uncompensated Baro-VNAV systems, LNAV/VNAV NA below -16°C or above 54°C. Simultaneous approach authorized with Rwy 36C/R. LNAV procedure NA during simultaneous operations. Use of FD or AP providing RNAV track guidance required during simultaneous operations.

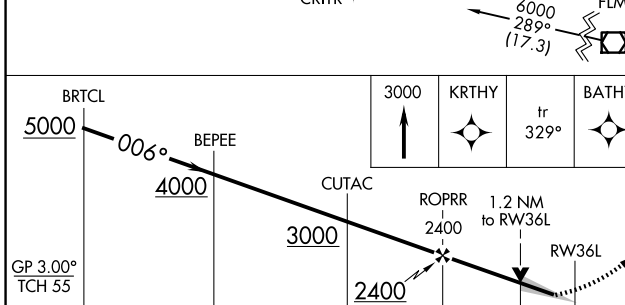
ALSF-2
A

MISSED APPROACH: Climb to 3000 direct KRTHY and on 329° track to BATHY and hold.

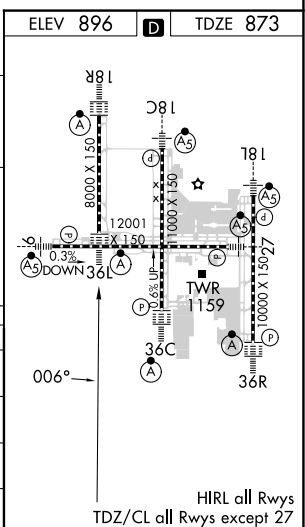
D-ATIS		CINCINNATI APP CON		CINCINNATI TOWER		GND CON	CLNC DEL	CPDLC
ARR	DEP	119.7	363.15 (090°-269°)	118.975	360.85 (RWY 18L/36R)	121.7	127.175	
134.375	135.3	123.875	363.15 (270°-089°)	118.3	(RWYS 18C/36C, 09/27)			
				133.325	(RWY 18R/36L)			



Procedure NA for arrivals at FLM VOR/DME on V517 southeast bound.



CATEGORY	A	B	C	D
LPV DA		1073/18	200 (200-½)	
LNAV/VNAV DA		1383/55	510 (500-1)	
LNAV MDA	1300/24	427 (500-½)	1300/40	427 (500-¾)
CIRCLING	1460-1	564 (600-1)	1560-1¾ 664 (700-1¾)	1560-2 664 (700-2)



SE-1, 20 FEB 2025 to 20 MAR 2025

SE-1, 20 FEB 2025 to 20 MAR 2025