

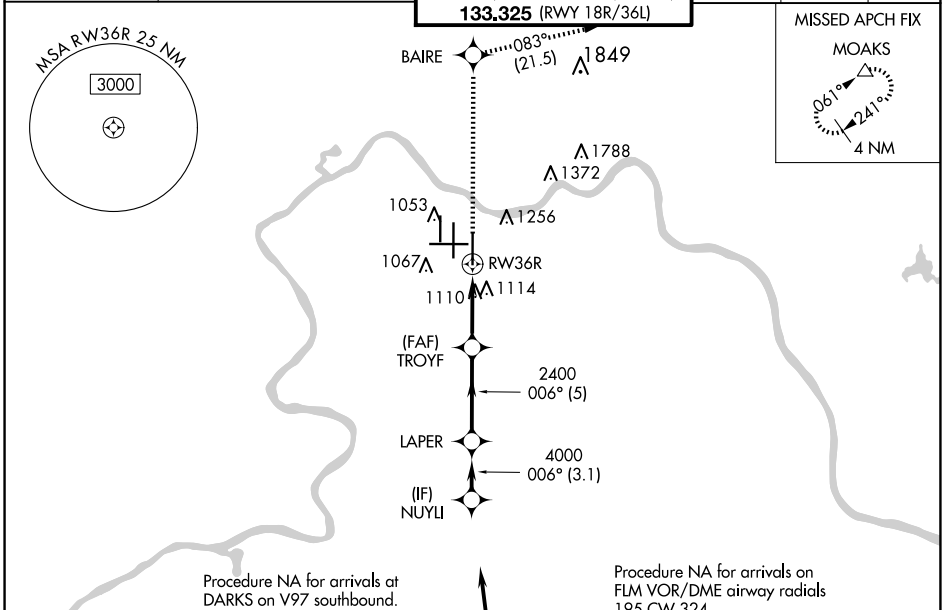
WAAS CH 42709	APP CRS 006°	Rwy Idg 10000
		TDZE 896
W36D		Apt Elev 896

RNAV (GPS) Y RWY 36R

CINCINNATI/NORTHERN KENTUCKY INTL (CVG)

RNP APCH - GPS.		ALSF-2	MISSED APPROACH: Climb to 3000 direct BAIRE and on 083° track to MOAKS and hold.
<p>▼ For uncompensated Baro-VNAV systems, LNAV/VNAV NA below -16°C or above 54°C. Simultaneous approach authorized with Rwy 36L/C. LNAV procedure NA during simultaneous operations. Use of FD or AP providing RNAV track guidance required during simultaneous operations.</p>		(A)	

D-ATIS ARR 134.375 DEP 135.3	CINCINNATI APP CON 119.7 363.15 (090°-269°)	CINCINNATI TOWER 118.975 360.85 (RWY 18L/36R) 118.3 (RWYS 18C/36C, 09/27) 133.325 (RWY 18R/36L)	GND CON 121.7	CLNC DEL 127.175	CPDLC
---	---	---	-------------------------	----------------------------	-------



ELEV 896	D	TDZE 896
----------	----------	----------

