

# DEEPO ONE ARRIVAL (RNAV)

NE-1, 20 FEB 2025 to 20 MAR 2025

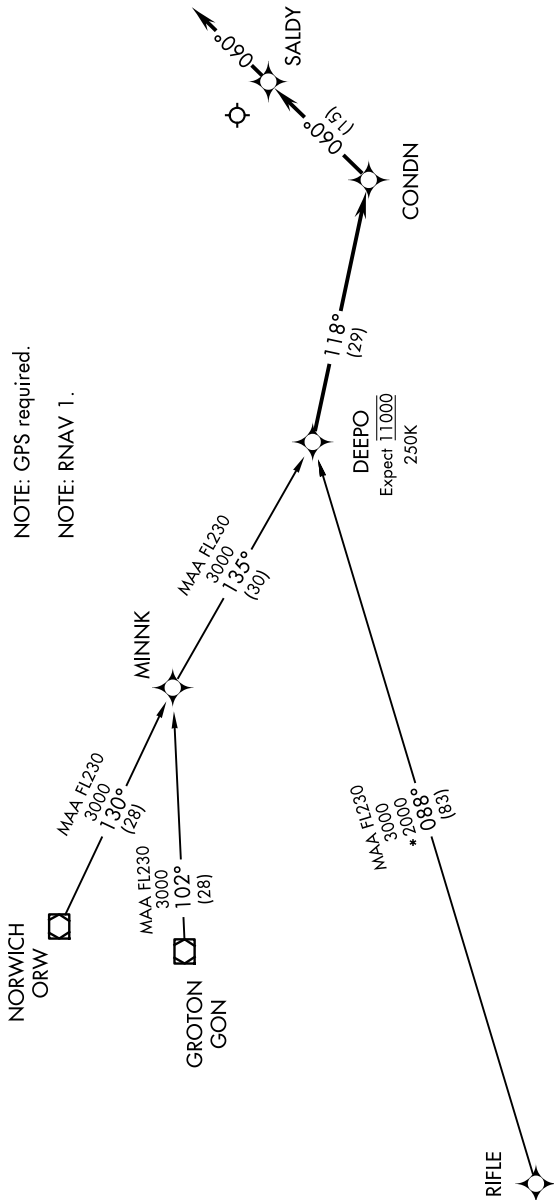
- GROTON TRANSITION (GON.DEEPO1)
- NORWICH TRANSITION (ORW.DEEPO1)
- RIFLE TRANSITION (RIFLE.DEEPO1)

BOSTON APP CON  
133.75 318.1  
ATIS  
127.5  
NANTUCKET TOWER ★  
118.3 (CTAF)

... From DEEPO, via 118° track to CONDN; thence via 060° track to SALDY. Depart SALDY heading 060°, expect radar vectors to final approach course.



- NOTE: RADAR required.
- NOTE: GPS required.
- NOTE: RNAV 1.



NE-1, 20 FEB 2025 to 20 MAR 2025