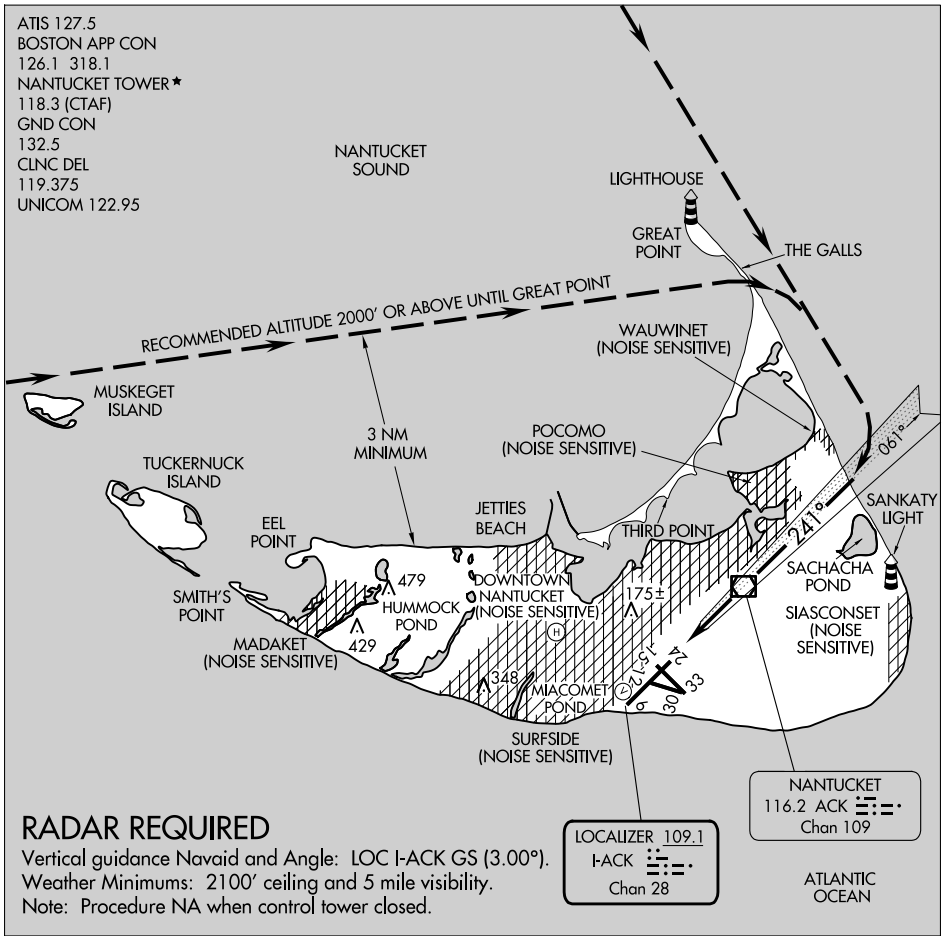


# GREAT POINT VISUAL RWY 24

AL-659 (FAA)

NANTUCKET MEML (ACK)  
NANTUCKET, MASSACHUSETTS

ATIS 127.5  
 BOSTON APP CON  
 126.1 318.1  
 NANTUCKET TOWER ★  
 118.3 (CTAF)  
 GND CON  
 132.5  
 CLNC DEL  
 119.375  
 UNICOM 122.95



NE-1, 20 FEB 2025 to 20 MAR 2025

NE-1, 20 FEB 2025 to 20 MAR 2025

## RADAR REQUIRED

Vertical guidance Navaid and Angle: LOC I-ACK GS (3.00°).  
 Weather Minimums: 2100' ceiling and 5 mile visibility.  
 Note: Procedure NA when control tower closed.

LOCALIZER 109.1  
 I-ACK  
 Chan 28

NANTUCKET  
 116.2 ACK  
 Chan 109

ATLANTIC OCEAN

1 NM	2	3	4	5	6	7	8	9	10	11	12	13	14	15

# GREAT POINT VISUAL RWY 24

41°15'N-70°04'W

NANTUCKET, MASSACHUSETTS  
NANTUCKET MEML (ACK)