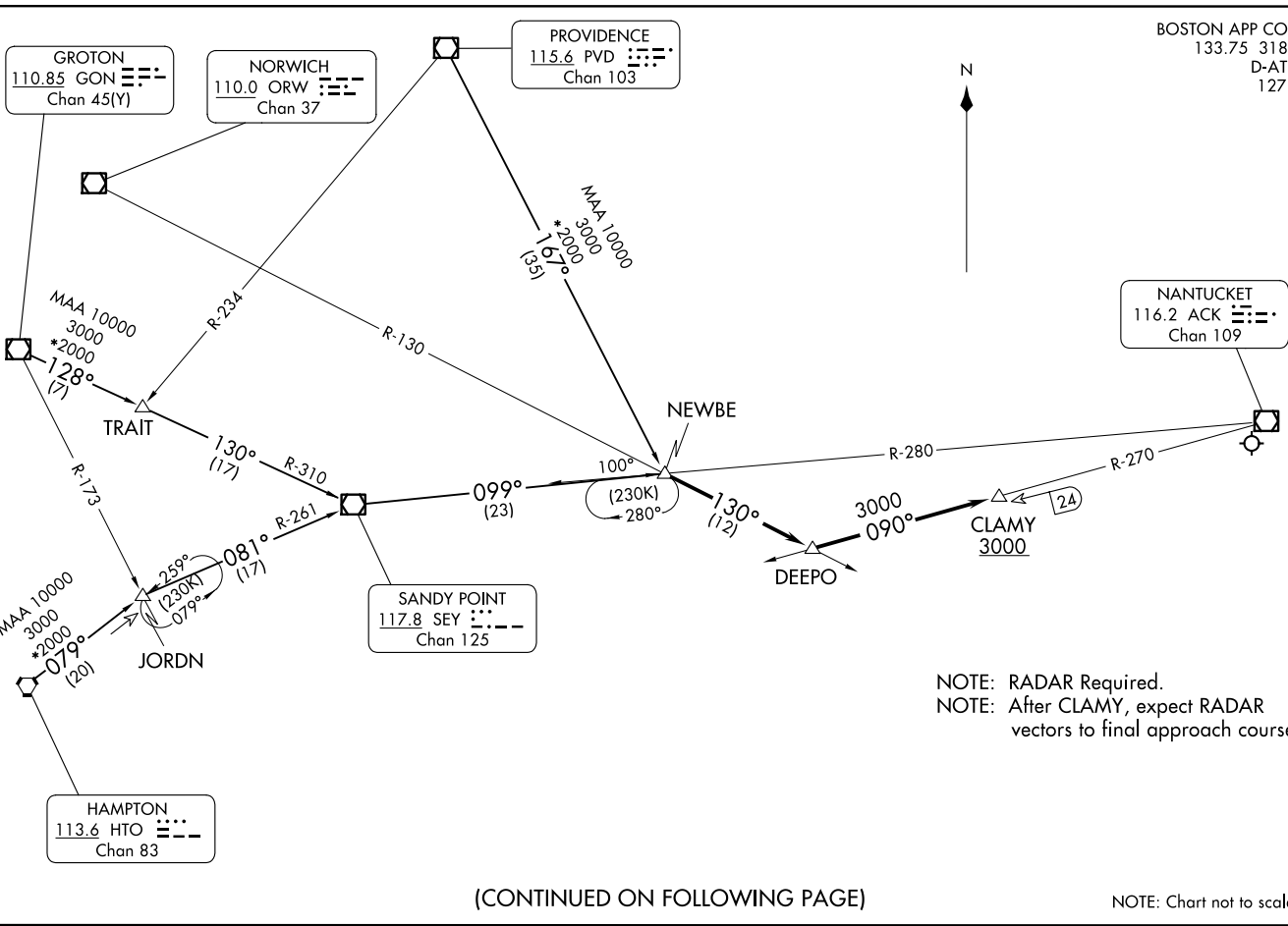


BOSTON APP CON
133.75 318.1
D-ATIS
127.5

(NEWBE, NEWBE3) 24277
NEWBE THREE ARRIVAL

AL-659 (FAA)

NANTUCKET MEML (ACK)
NANTUCKET, MASSACHUSETTS



NEWBE THREE ARRIVAL
(NEWBE, NEWBE3) 120CT17

NANTUCKET, MASSACHUSETTS
NANTUCKET MEML (ACK)

(CONTINUED ON FOLLOWING PAGE)

NOTE: Chart not to scale.

ARRIVAL DESCRIPTION

GROTON TRANSITION (GON.NEWBE3): From over GON VOR/DME on GON R-128 to TRAIT INT, then on SEY R-310 to SEY VOR/DME, then on SEY R-099 to NEWBE. Thence

HAMPTON TRANSITION (HTO.NEWBE3): From over HTO VORTAC on HTO R-079 to JORDN INT, then on SEY R-261 to SEY VOR/DME, then on SEY R-099 to NEWBE. Thence

PROVIDENCE TRANSITION (PVD.NEWBE3): From over PVD VOR/DME on PVD R-167 to NEWBE. Thence

. . . . From over NEWBE on ORW R-130 to DEEPO, then on ACK R-270 to cross CLAMY at or above 3000. After CLAMY, expect vectors to the final approach course.

NE-1, 20 FEB 2025 to 20 MAR 2025

NE-1, 20 FEB 2025 to 20 MAR 2025