

ACK VOR/DME 116.2 Chan 109	APP CRS 240°	Rwy Idg 6303 TDZE 48 Apt Elev 48
--	------------------------	---

VOR RWY 24

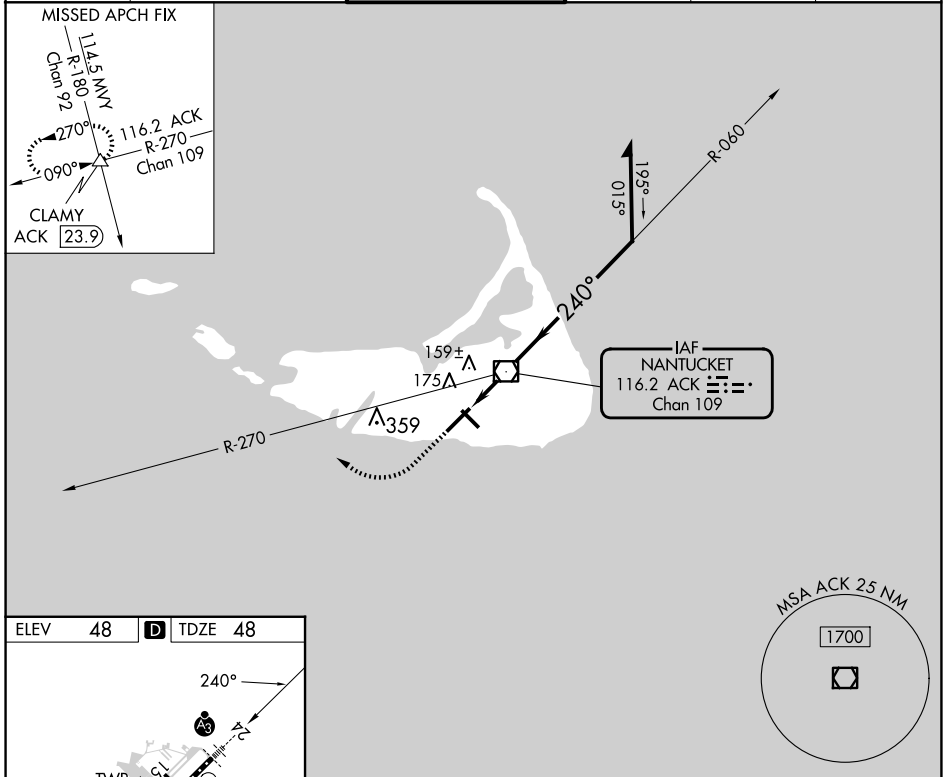
NANTUCKET MEML (ACK)

⚠ When local altimeter setting not received, use Hyannis altimeter setting and increase all MDA 80 feet; increase S-24 Cat C visibility to RVR 4000; increase Circling Cats C/D visibility ¼ SM. VDP NA when using Hyannis altimeter setting. For Inoperative SSALR, increase S-24 Cat D visibility to RVR 6000.

SSALR
A3

MISSED APPROACH: Climb to 700 then climbing right turn to 2500 via heading 310° and ACK VOR/DME R-270 to CLAMY INT/ACK 23.9 DME and hold.

ATIS 127.5	BOSTON APP CON 126.1 318.1	NANTUCKET TOWER ★ 118.3 (CTAF) 0	GND CON 132.5	CLNC DEL 119.375	UNICOM 122.95
----------------------	--------------------------------------	--	-------------------------	----------------------------	-------------------------



ELEV 48	D	TDZE 48
TDZ/CL Rwy 24 REIL Rws 15 and 33 MIRL Rwy 15-33 HIRL Rwy 6-24		
FAF to MAP 1.9 NM		
Knots	60	90 120 150 180
Min:Sec	1:54	1:16 0:57 0:46 0:38

700	2500	CLAMY	ACK R-270	ACK VOR/DME	Remain within 10 NM
↑	hdg 310°	△		6000	
		ACK 0.9	ACK 1.9	800	060°
		3.47°	TCH 48		1800
		1 NM	0.9 NM		240°
VGSI and descent angles not coincident (VGSI Angle 3.00/TCH 48).					
CATEGORY	A	B	C	D	
S-24	440/24 393 (400-½)			440/50 393 (400-1)	
C CIRCLING	480-1 433 (500-1)	500-1 453 (500-1)	720-2 673 (700-2)	720-2¼ 673 (700-2¼)	

NE-1, 20 FEB 2025 to 20 MAR 2025

NE-1, 20 FEB 2025 to 20 MAR 2025