

| | | |
|---|------------------------|---|
| LOC/DME I-ZK 109.9 Chan 36 | APP CRS 222° | Rwy Idg 7502 TDZE 933 Apt Elev 962 |
|---|------------------------|---|

ILS or LOC RWY 22

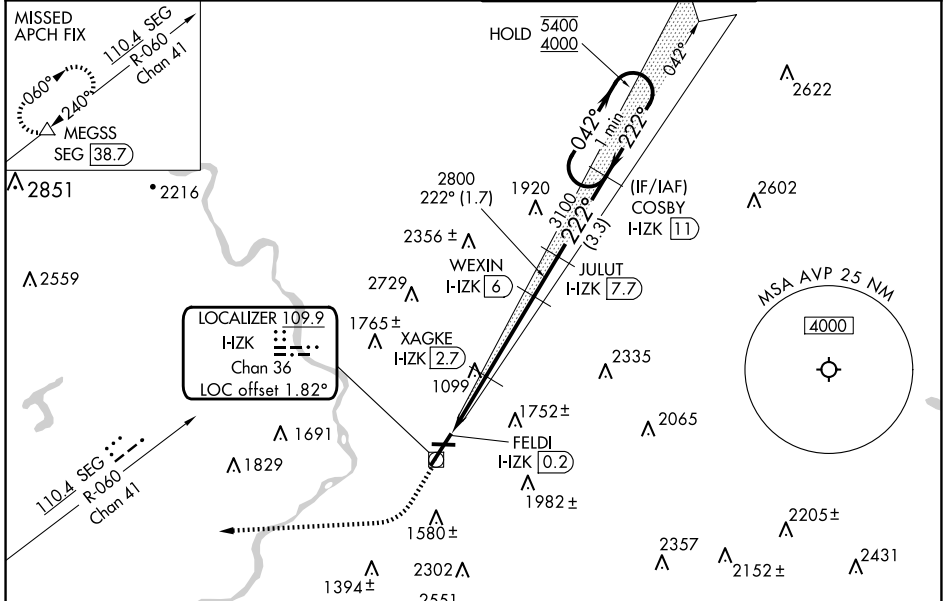
WILKES-BARRE/SCRANTON INTL (AVP)

RADAR required for procedure entry. DME required.

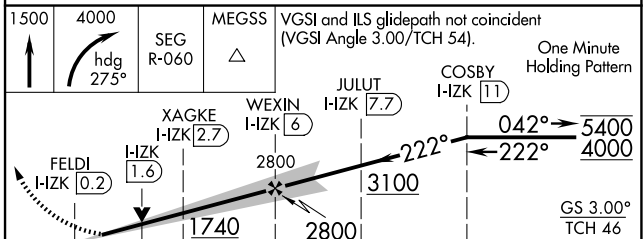
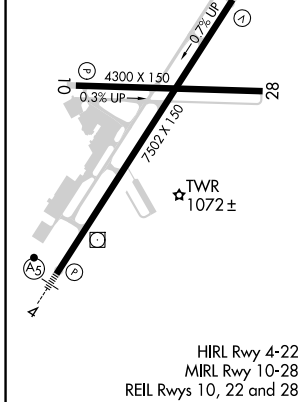
⚠ Circling NA for Cats C and D southeast of Rwy 4-22.
Circling Rwy 28 NA at night.

MISSED APPROACH: Climb to 1500 then climbing right turn to 4000 on heading 275° and SEG VOR/DME R-060 to MEGSS/SEG 38.7 DME and hold.

| | | | |
|-----------------------|--|--|-------------------------|
| ATIS 135.75 | WILKES-BARRE APP CON 120.95 256.7 126.3 256.7 (280°-100°) (101°-279°) | WILKES-BARRE TOWER 120.1 257.8 | GND CON 121.9 |
|-----------------------|--|--|-------------------------|



| | | |
|----------|----------|----------|
| ELEV 962 | D | TDZE 933 |
|----------|----------|----------|



| CATEGORY | A | B | C | D |
|----------|--|--|-------------------------|----------------------------|
| S-ILS 22 | 1201/45 268 (300-7%) | | | |
| S-LOC 22 | 1400/55 | 467 (500-1) | 1400-1 $\frac{3}{8}$ | 467 (500-1 $\frac{3}{8}$) |
| CIRCLING | 1840-1 $\frac{1}{4}$ 878 (900-1 $\frac{1}{4}$) | 1980-1 $\frac{1}{2}$ 1018 (1100-1 $\frac{1}{2}$) | 1980-3 1018 (1100-3) | 2280-3 1318 (1400-3) |

NE-4, 20 FEB 2025 to 20 MAR 2025

NE-4, 20 FEB 2025 to 20 MAR 2025