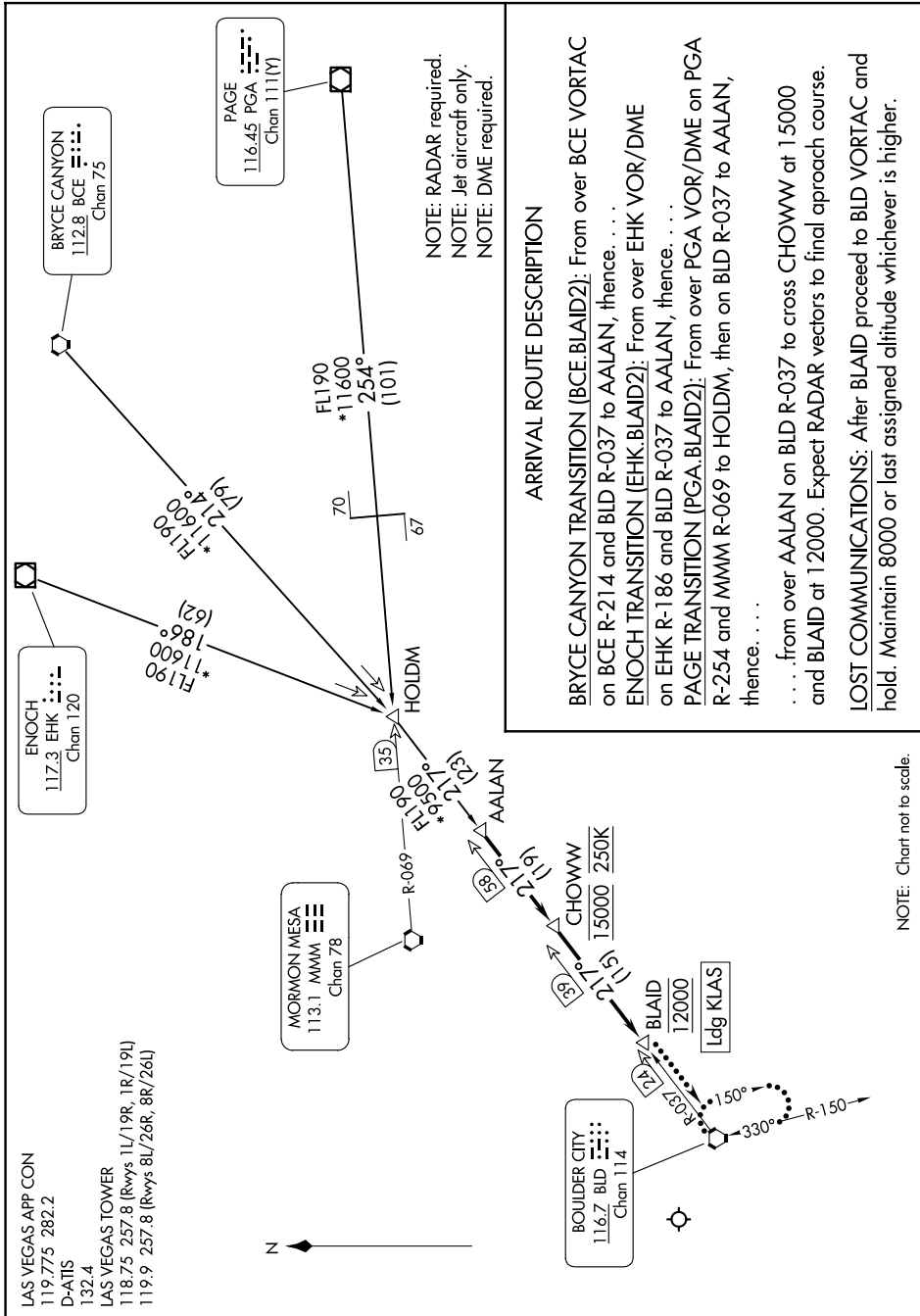


# BLAID TWO ARRIVAL

AL-662 (FAA)

HARRY REID INTL (LAS)  
LAS VEGAS, NEVADA

SW-4, 20 FEB 2025 to 20 MAR 2025



LAS VEGAS APP CON  
119.775 282.2  
D-ATIS  
132.4  
LAS VEGAS TOWER  
118.75 257.8 (Rvys 1L/19R, 1R/19L)  
119.9 257.8 (Rvys 8L/26R, 8R/26L)

# BLAID TWO ARRIVAL

(AALAN.BLAID2) 25JAN24

LAS VEGAS, NEVADA  
HARRY REID INTL (LAS)

### ARRIVAL ROUTE DESCRIPTION

**BRYCE CANYON TRANSITION (BCE:BLAID2):** From over BCE VORTAC on BCE R-214 and BLD R-037 to AALAN, thence. . . .

**ENOCH TRANSITION (EHK:BLAID2):** From over EHK VOR/DME on EHK R-186 and BLD R-037 to AALAN, thence. . . .

**PAGE TRANSITION (PGA:BLAID2):** From over PGA VOR/DME on PGA R-254 and MMM R-069 to HOLDIM, then on BLD R-037 to AALAN, thence. . . .

. . . from over AALAN on BLD R-037 to cross CHOWWW at 15000 and BLAID at 12000. Expect RADAR vectors to final approach course.

**LOST COMMUNICATIONS:** After BLAID proceed to BLD VORTAC and hold. Maintain 8000 or last assigned altitude whichever is higher.

NOTE: RADAR required.  
NOTE: Jet aircraft only.  
NOTE: DME required.

NOTE: Chart not to scale.

SW-4, 20 FEB 2025 to 20 MAR 2025