

HOOVER EIGHT DEPARTURE  
(HOOVR8.LAS) 08SEP22

LAS VEGAS DEP CON  
125.9 307.25 (Rwys 19L/R, 26L/R)  
133.95 353.7 (Rwys 1L/R, 8L/R)  
CLNC DEL  
118.0  
CPDLC  
GND CON  
121.1 270.8 E of 1R/19L  
121.9 254.3 W of 1L/19R  
LAS VEGAS TOWER  
118.75 257.8 (Rwys 1L/R, 19L/R)  
119.9 257.8 (Rwys 8L/R, 26L/R)

**TOP ALTITUDE:  
ASSIGNED BY ATC**

RADAR and DME required

DOVE CREEK  
114.6 DVC  
Chan 93

MILFORD  
112.1 MLF  
Chan 58

MORMON MESA  
113.1 MMM  
Chan 78

PAGE  
116.45 PGA  
Chan 111(Y)

LAS VEGAS  
116.9 LAS  
Chan 116

BOULDER CITY  
116.7 BLD  
Chan 114

CHALL  
10000  
\*8100  
080°  
(17)

COWBY  
\*8000  
121°  
(25)

PEACH SPRINGS  
112.0 PGS  
Chan 57

KINGMAN  
108.8 IGM  
Chan 25

DRAKE  
114.1 DRK  
Chan 88

NOTE: Turbojets only.

**TAKEOFF MINIMUMS**

Rwys 1L/R: Standard with minimum climb of 400' per NM to 7000.  
Rwys 8L/R: Standard with minimum climb of 440' per NM to 7000.  
Rwys 19L/R, 26L/R: Standard with minimum climb of 410' per NM to 7000.

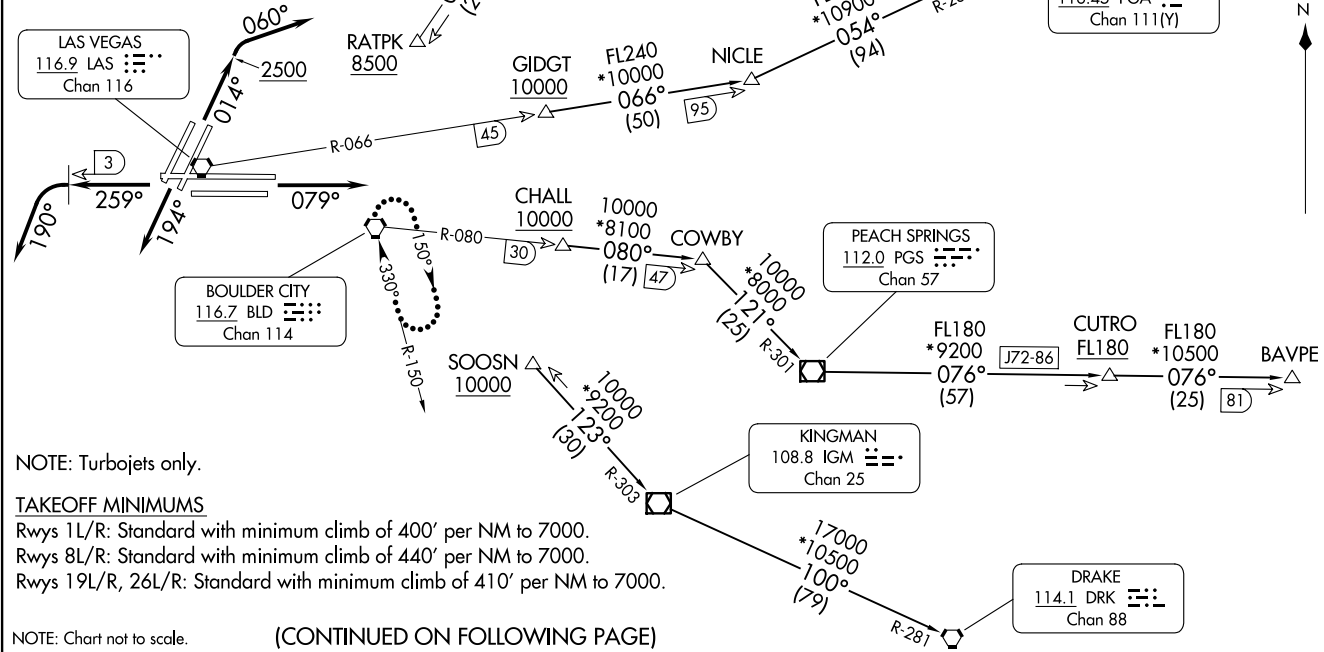
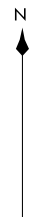
NOTE: Chart not to scale.

(CONTINUED ON FOLLOWING PAGE)

(HOOVR8.LAS) 24277  
HOOVER EIGHT DEPARTURE

AL-662 (FAA)

HARRY REID INTL (LAS)  
LAS VEGAS, NEVADA





DEPARTURE ROUTE DESCRIPTION

TAKEOFF RUNWAYS 1L/R: Climb on heading 014° to 2500, then climbing right turn heading 060°, thence. . . .

TAKEOFF RUNWAYS 8L/R: Climb on heading 079°, thence. . . .

TAKEOFF RUNWAYS 19L/R: Climb on heading 194°, thence. . . .

TAKEOFF RUNWAYS 26L/R: Climb on heading 259° until LAS VORTAC 3 DME, then climbing left turn heading 190°, thence. . . .

. . . .RADAR vectors to transition or assigned route. Maintain ATC assigned altitude, expect clearance to filed altitude two minutes after departure.

LOST COMMUNICATIONS: If no contact with ATC upon reaching 7000, proceed direct BLD VORTAC then climb in BLD VORTAC holding pattern to appropriate MEA for route of flight.

BAVPE TRANSITION (HOOVR8.BAVPE): From over CHALL on BLD R-080 and PGS R-301 to PGS VOR/DME, then on PGS R-076 to BAVPE.

DOVE CREEK TRANSITION (HOOVR8.DVC): From over GIDGT on LAS R-066 and PGA R-234 to PGA VOR/DME, then on PGA R-053 and DVC R-233 to DVC VORTAC.

DRAKE TRANSITION (HOOVR8.DRK): From over SOOSN on IGM R-303 to IGM VOR/DME, then on IGM R-100 and DRK R-281 to DRK VORTAC.

MILFORD TRANSITION (HOOVR8.MLF): From over RATPK on MMM R-199 to MMM VORTAC, then on MMM R-016 and MLF R-197 to MLF VORTAC.

SW-4, 20 FEB 2025 to 20 MAR 2025

SW-4, 20 FEB 2025 to 20 MAR 2025