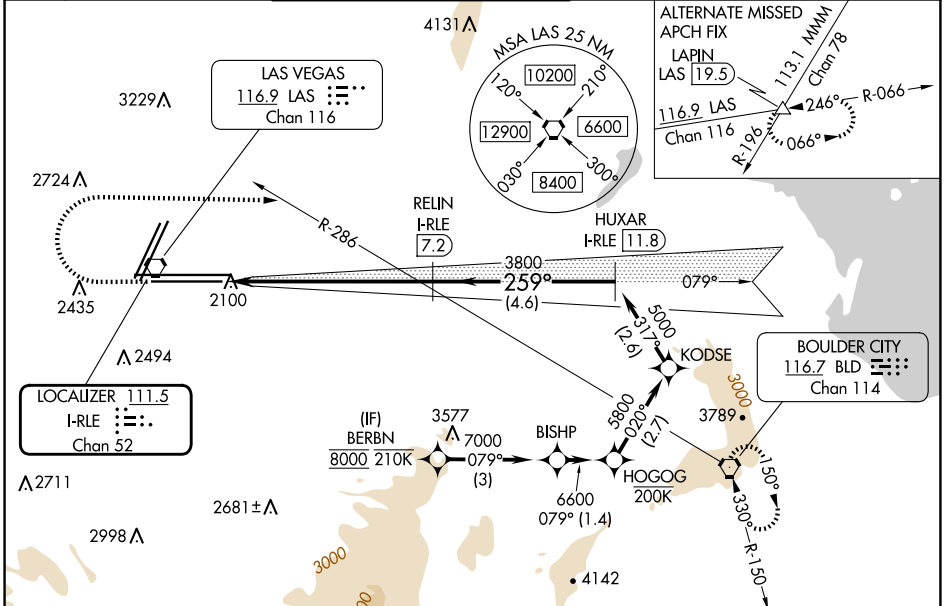


LOC/DME I-RLE <b>111.5</b> Chan 52	APP CRS <b>259°</b>	Rwy Idg	26L	26R
		TDZE	10526	12638
			2069	2067
		Apt Elev	2181	2181

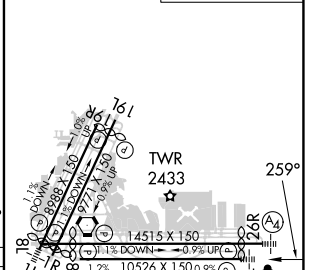
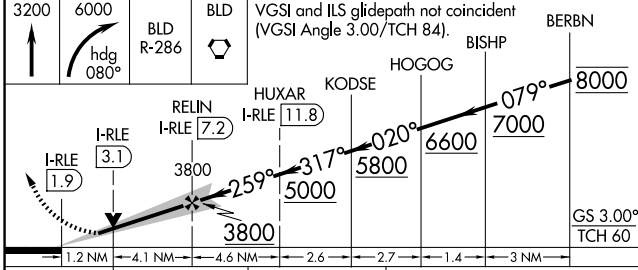
# ILS Y or LOC Y RWY 26L

HARRY REID INTL (LAS)

RNP APCH - GPS.		DME required.		MALSF Rwy 26L	MALS Rwy 26R	MISSED APPROACH: Climb to 3200 then climbing right turn to 6000 heading 080° and on BLD R-286 to BLD VORTAC and hold, continue climb-in-hold to 6000.	
<p>▼ Inop table does not apply to S-ILS 26L or Sidestep 26R. For inop ALS increase S-LOC 26L Cats C and D visibility to 1 ½ SM.</p>				(A4)	(A4)		
D-ATIS	LAS VEGAS APP CON	LAS VEGAS TOWER		GND CON		CLNC DEL	CPDLC
<b>132.4</b>	<b>125.025 379.15</b> (West) <b>119.775 282.2</b> (East)	<b>118.75 257.8</b> (Rwy 1L/19R, 1R/19L) <b>119.9 257.8</b> (Rwy 8L/26R, 8R/26L)	<b>121.1 270.8</b> E of 1R/19L <b>121.9 254.3</b> W of 1L/19R			<b>118.0</b>	



ELEV 2181	TDZE 26L 2069
	TDZE 26R 2067



CATEGORY	A	B	C	D
S-ILS 26L	2269-¾ 200 (100-¾)			
S-LOC 26L	2520-¾ 451 (400-¾)	2520-1 451 (400-1)		
SIDESTEP 26R	2560-1 493 (400-1)	2560-1½ 493 (400-1½)	2560-2 493 (400-2)	
CIRCLING	3020-1¼ 839 (900-1¼)	3060-1¼ 879 (900-1¼)	3100-2¾ 919 (1000-2¾)	3540-3 1359 (1400-3)

MIRL Rwy 1R-19L
REIL Rws 1R, 8R, 19L and 19R
HIRL Rws 1L-19R, 8L-26R and 8R-26L

SW-4, 20 FEB 2025 to 20 MAR 2025

SW-4, 20 FEB 2025 to 20 MAR 2025