

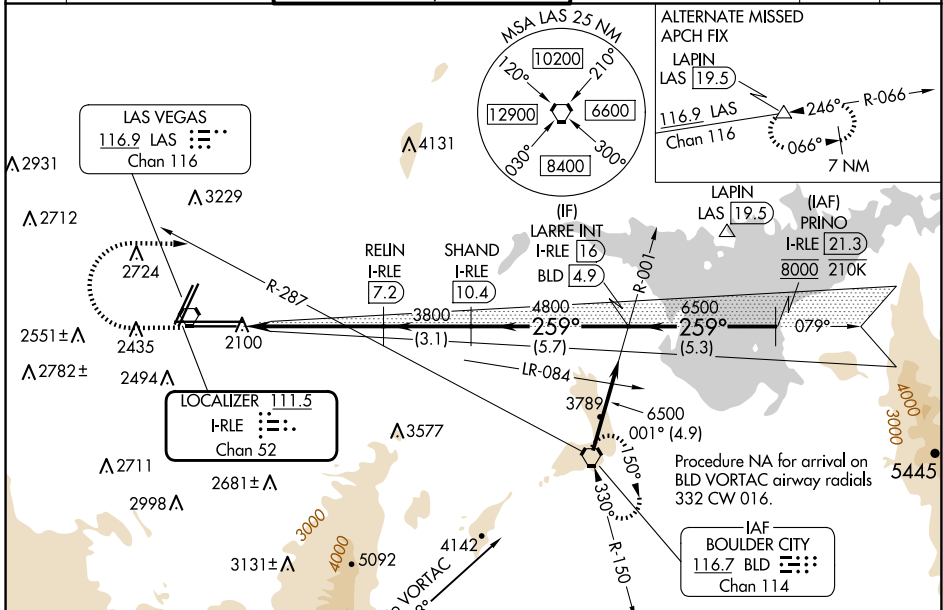
LOC/DME I-RLE 111.5 Chan 52	APP CRS 259°	Rwy Idg 26L 10526 26R 12638 TDZE 2069 2067 Apt Elev 2181 2181
---	------------------------	---

ILS Z or LOC Z RWY 26L

HARRY REID INTL (LAS)

DME required.	MALS F Rwy 26L	MALS Rwy 26R	MISSED APPROACH: Climb to 3200 then climbing right turn to 6000 heading 080° and on BLD R-287 to BLD VORTAC and hold, continue climb-in-hold to 6000.
<p>▼ Inop table does not apply to S-ILS 26L and Sidestep 26R.</p> <p>▲ For inop ALS, increase S-LOC 26L Cat C/D/E visibility to 1 3/8 SM.</p>			

D-ATIS 132.4	LAS VEGAS APP CON 125.025 379.15 (West) 119.775 282.2 (East)	LAS VEGAS TOWER 118.75 257.8 (Rwy 1L/19R, 1R/19L) 119.9 257.8 (Rwy 8L/26R, 8R/26L)	GND CON 121.1 270.8 E of 1R/19L 121.9 254.3 W of 1L/19R	CLNC DEL 118.0	CPDLC
------------------------	--	--	---	--------------------------	-------



3200	6000	BLD R-287	BLD	VGSI and ILS glidepath not coincident (VGSI Angle 3.00/TCH 84).	PRINO I-RLE [21.3]
I-RLE [1.9]	I-RLE [3.1]	I-RLE [7.2]	I-RLE [10.4]	I-RLE [16]	I-RLE [21.3]
1.2 NM	4.1 NM	3.1 NM	5.7 NM	5.3 NM	8000
CATEGORY	A	B	C	D	E
S-ILS 26L	2269-3/4 200 (100-3/4)				
S-LOC 26L	2520-3/4	451 (400-3/4)	2520-1 451 (400-1)		
SIDESTEP 26R	2560-1	493 (400-1)	2560-1 1/2 493 (400-1 1/2)	2560-2	493 (400-2)
CIRCLING	3020-1 1/4 839 (900-1 1/4)	3060-1 1/4 879 (900-1 1/4)	3100-2 3/4 919 (1000-2 3/4)	3540-3	1359 (1400-3)

ELEV 2181	TDZE 26L 2069	TDZE 26R 2067
-----------	---------------	---------------

Procedure NA for arrival on BLD VORTAC airway radials 332 CW 016.

IAF BOULDER CITY 116.7 BLD Chan 114

TWR 2433

14515 X 150

10526 X 150 0.9% UP

1268

259°

SW-4, 20 FEB 2025 to 20 MAR 2025

SW-4, 20 FEB 2025 to 20 MAR 2025