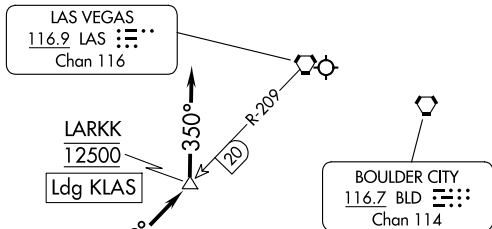


(RNRZ.LARKK1) 24025  
**LARKK ONE ARRIVAL**

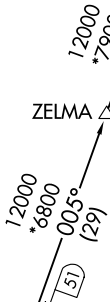
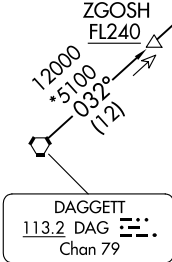
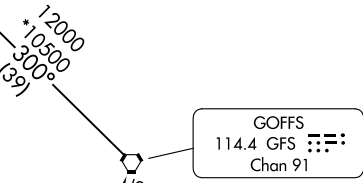
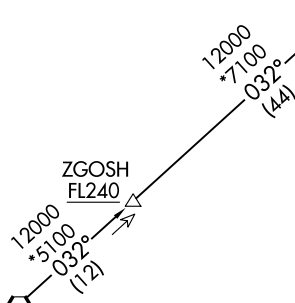
HARRY REID INTL (L.A.S)  
 LAS VEGAS, NEVADA

AL-662 (FAA)

LAS VEGAS APP CON  
 125.025 379.15  
 D-ATIS  
 132.4  
 LAS VEGAS TOWER  
 118.75 257.8 (Rwys 1L/19R, 1R/19L)  
 119.9 257.8 (Rwys 8L/26R, 8R/26L)



RNRZ  
 15000 250K



NOTE: Chart not to scale.

NOTE: RADAR required.  
 NOTE: Turbojet aircraft only.  
 NOTE: DME required.

**ARRIVAL ROUTE DESCRIPTION**

**DAGGETT TRANSITION (DAG.LARKK1):** From over DAG VORTAC on DAG R-032 to RNRZ, thence. . . .

**TWENTYNINE PALMS TRANSITION (TNP.LARKK1):** From over TNP VORTAC on TNP R-028 and GFS R-185 to GFS VORTAC, then on GFS R-300 to RNRZ, thence. . . .

. . . from over RNRZ on LAS R-209 to cross LARKK at 12500, then depart LARKK heading 350° for vectors to final approach.

**LOST COMMUNICATIONS:** Proceed to BLD VORTAC and hold. Maintain 8000 or last assigned altitude whichever is greater.

**LARKK ONE ARRIVAL**  
 (RNRZ.LARKK1) 25FEB21

LAS VEGAS, NEVADA  
 HARRY REID INTL (L.A.S)

SW-4, 20 FEB 2025 to 20 MAR 2025

SW-4, 20 FEB 2025 to 20 MAR 2025