

| | | |
|--|------------------------|--|
| WAAS CH 42800 W01A | APP CRS 014° | Rwy Idg TDZE Apt Elev 8785 2170 2181 |
|--|------------------------|--|

RNAV (GPS) RWY 1R

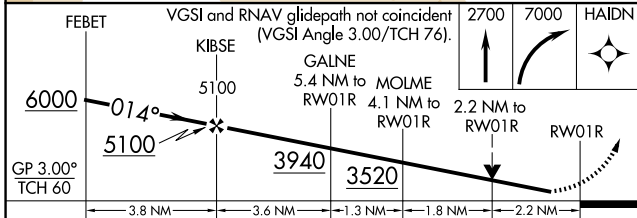
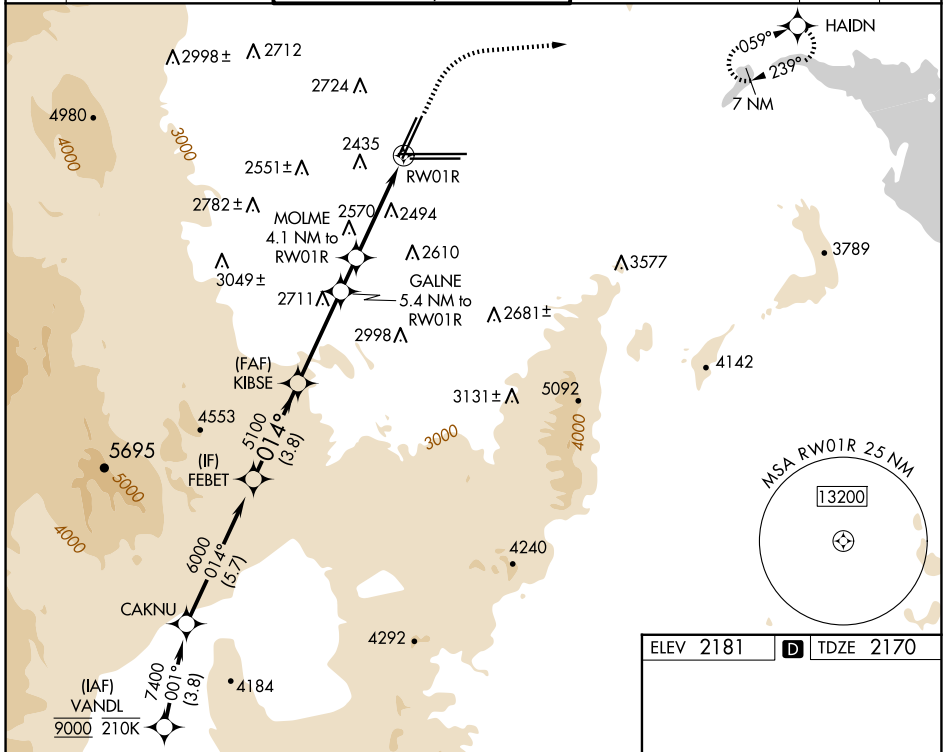
HARRY REID INTL (LAS)

RNP APCH - GPS. RADAR required.

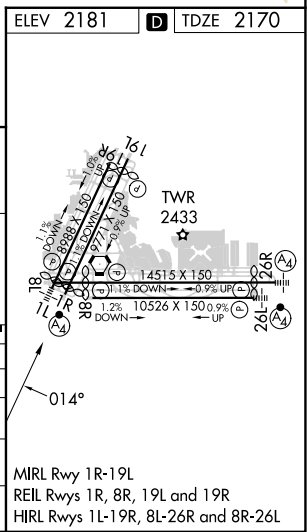
MISSED APPROACH: Climb to 2700 then climbing right turn to 7000 direct HAIN and hold, continue climb-in-hold to 7000.

Rwy 1R helicopter visibility reduction below 3/4 SM NA. For uncompensated Baro-VNAV systems, LNAV/VNAV NA below 0°C or above 54°C.

| | | | | | |
|------------------------|--|--|---|--------------------------|-------|
| D-ATIS 132.4 | LAS VEGAS APP CON 125.025 379.15 (West) 119.775 282.2 (East) | LAS VEGAS TOWER 118.75 257.8 (Rwy 1L/19R, 1R/19L) 119.9 257.8 (Rwy 8L/26R, 8R/26L) | GND CON 121.1 270.8 E of 1R/19L 121.9 254.3 W of 1L/19R | CLNC DEL 118.0 | CPDLC |
|------------------------|--|--|---|--------------------------|-------|



| CATEGORY | A | B | C | D |
|--------------|-------------------------------|-------------------------------|--------------------------------|-------------------------|
| LPV DA | | 2458-7/8 | 288 (300-7/8) | |
| LNAV/VNAV DA | | 2641-13/8 | 471 (500-13/8) | |
| LNAV MDA | 2960-1 790 (800-1) | 2960-1 1/4 790 (800-1 1/4) | 2960-2 1/2 790 (800-2 1/2) | 790 (800-2 1/2) |
| CIRCLING | 3020-1 1/4 839 (900-1 1/4) | 3060-1 1/4 879 (900-1 1/4) | 3100-2 3/4 919 (1000-2 3/4) | 3540-3 1359 (1400-3) |



SW-4, 20 FEB 2025 to 20 MAR 2025

SW-4, 20 FEB 2025 to 20 MAR 2025