

RNAV 1 - DME/DME/IRU or GPS.
RADAR required.

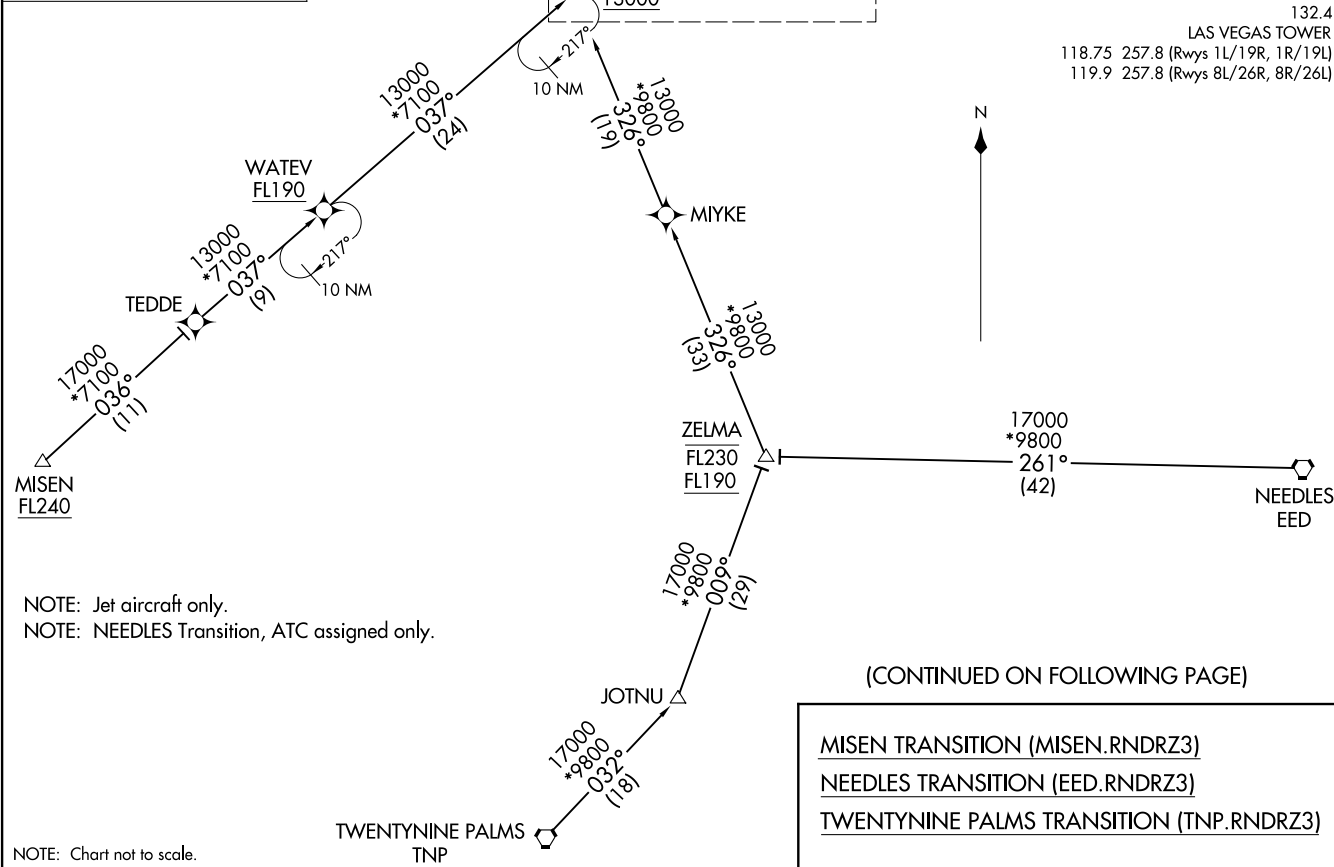
RNDRZ
16000 250K
13000
See following page for Arrival Routes

LAS VEGAS APP CON
125.025 379.15
D-ATIS
132.4
LAS VEGAS TOWER
118.75 257.8 (Rwys 1L/19R, 1R/19L)
119.9 257.8 (Rwys 8L/26R, 8R/26L)

RNDRZ THREE ARRIVAL (RNAV) (RNDRZ.RNDRZ3) 31OCT24

Transition Routes

LAS VEGAS, NEVADA
HARRY REID INTL (LAS)



NOTE: Jet aircraft only.
NOTE: NEEDLES Transition, ATC assigned only.

NOTE: Chart not to scale.

(CONTINUED ON FOLLOWING PAGE)

- MISEN TRANSITION (MISEN.RNDRZ3)
- NEEDLES TRANSITION (EED.RNDRZ3)
- TWENTYNINE PALMS TRANSITION (TNP.RNDRZ3)

(RNDRZ.RNDRZ3) 24305
RNDRZ THREE ARRIVAL (RNAV) Transition Routes

AL-662 (FAA)

HARRY REID INTL (LAS)
LAS VEGAS, NEVADA

LAS VEGAS APP CON
125.025 379.15
D-ATIS
132.4
LAS VEGAS TOWER
118.75 257.8 (Rwys 1L/19R, 1R/19L)
119.9 257.8 (Rwys 8L/26R, 8R/26L)

RNAV 1- DME/DME/IRU or GPS.
RADAR required.

LAS VEGAS LAS

ENNVY
11000

REDQN
9000 210K

BERBN
8000 210K

BOULDER CITY
BLD

Ldg Rwys 19L/R, 26L/R

YAGGR
8000 210K
Ldg Rwys 8L/R

ROAMN
8000 210K
Ldg Rwys 1L/R

BUETY
13000

GRMMA

RUMLY
13000
10000

HIMIT
8800

SLOTS
8000

RNDRZ
16000 250K
13000



10 NM

(CONTINUED ON FOLLOWING PAGE)

NOTE: Jet aircraft only.
NOTE: NEEDLES Transition, ATC assigned only.

NOTE: Chart not to scale.

RNDRZ THREE ARRIVAL (RNAV)
(RNDRZ.RNDRZ3) 31OCT24

Arrival Routes

LAS VEGAS, NEVADA
HARRY REID INTL (LAS)

(RNDRZ.RNDRZ3) 24305
RNDRZ THREE ARRIVAL (RNAV)

Arrival Routes

AL-662 (FAA)
HARRY REID INTL (LAS)
LAS VEGAS, NEVADA

ARRIVAL ROUTE DESCRIPTION

LANDING RUNWAYS 1L/R: From RNRZ on track 048° to cross RUMLY between 10000 and 13000, then on track 048° to cross HIMIT at or above 8800, then on track 048° to cross SLOTS at 8000, then on track 030° to cross ROAMN at 8000 and at 210K, then on track 030°. Expect RADAR vectors to final approach course.

LANDING RUNWAYS 8L/R: From RNRZ on track 048° to cross RUMLY between 10000 and 13000, then on track 048° to cross HIMIT at or above 8800, then on track 048° to cross SLOTS at 8000, then on track 006° to cross YAGGR at 8000 and at 210K, then on track 005°. Expect RADAR vectors to final approach course.

LANDING RUNWAYS 19L/R, 26L/R: From RNRZ on track 037° to GRMMA, then on track 019° to cross BUETY at or above 13000, then on track 019° to cross ENNVY at or above 11000, then on track 082° to cross REDQN at or above 9000 and at 210K, then on track 083° to cross BERBN at 8000 and at 210K, then on track 079°. Expect RADAR vectors to final approach course.

LOST COMMUNICATIONS

LANDING RUNWAY 8R: At YAGGR proceed on the RNAV (RNP) RWY 8R approach, if unable, proceed visually to intercept the final approach course; if unable, maintain 8000 proceed direct LAS VORTAC then maintain 7000 proceed to BLD VORTAC and then on the ILS or LOC RWY 26L approach.

SW-4, 20 FEB 2025 to 20 MAR 2025

SW-4, 20 FEB 2025 to 20 MAR 2025