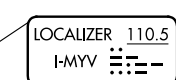
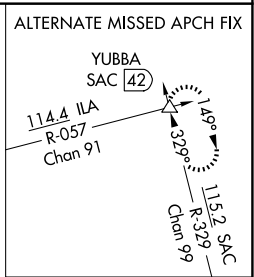
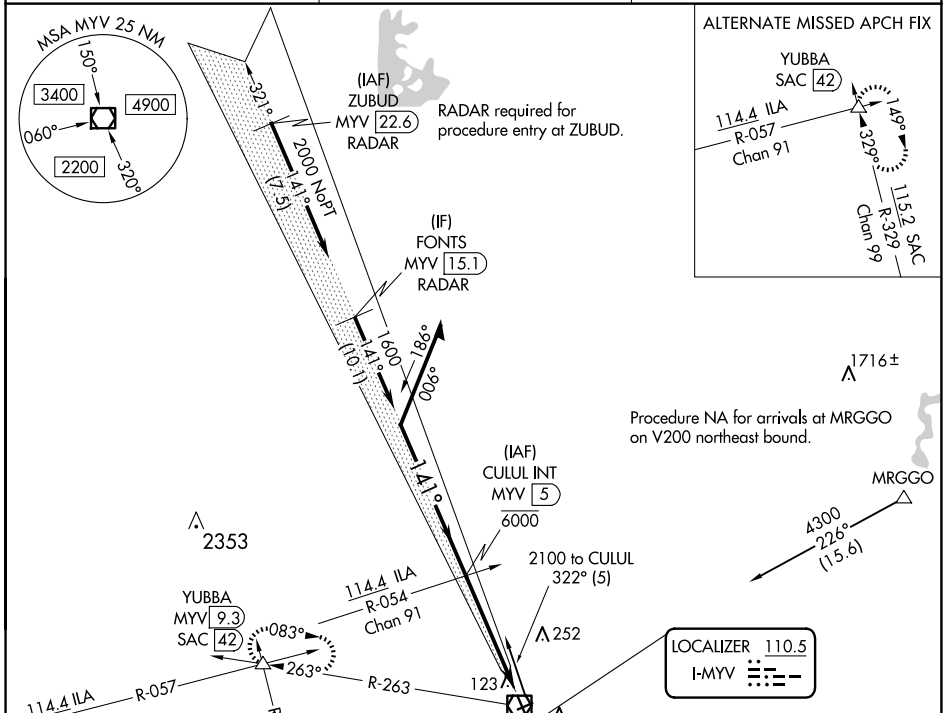


LOC I-MYV <b>110.5</b>	APP CRS <b>141°</b>	Rwy Idg <b>6007</b> TDZE <b>64</b> Apt Elev <b>64</b>
---------------------------	------------------------	---

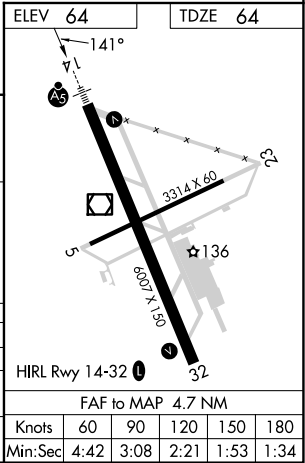
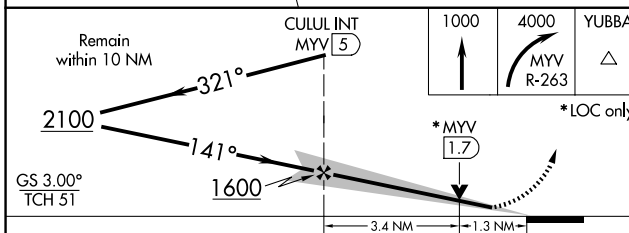
**ILS or LOC RWY 14**  
YUBA COUNTY (MYV)

NA Circling Rwy 5, 23 NA at night. Autopilot coupled approach NA below 695.	MALSR MALS MALS R	MISSED APPROACH: Climb to 1000 then climbing right turn to 4000 on MYV VOR/DME R-263 to YUBBA INT/ MYV 9.3 DME and hold, continue climb in hold to 4000.

ASOS <b>118.475</b>	NORCAL APP CON <b>125.4 259.1</b>	UNICOM <b>123.05 (CTAF)</b>
------------------------	--------------------------------------	--------------------------------



ELEV <b>64</b>	TDZE <b>64</b>
----------------	----------------



CATEGORY	A	B	C	D
S-ILS 14	264-½		200 (200-½)	
S-LOC 14	520-½	456 (500-½)	520-⅞	456 (500-⅞)
CIRCLING	540-1	476 (500-1)	560-1½ 496 (500-1½)	620-2 556 (600-2)

SW-2, 20 FEB 2025 to 20 MAR 2025

SW-2, 20 FEB 2025 to 20 MAR 2025

F knots	60	90	120	150	180
Min:Sec	4:42	3:08	2:21	1:53	1:34