

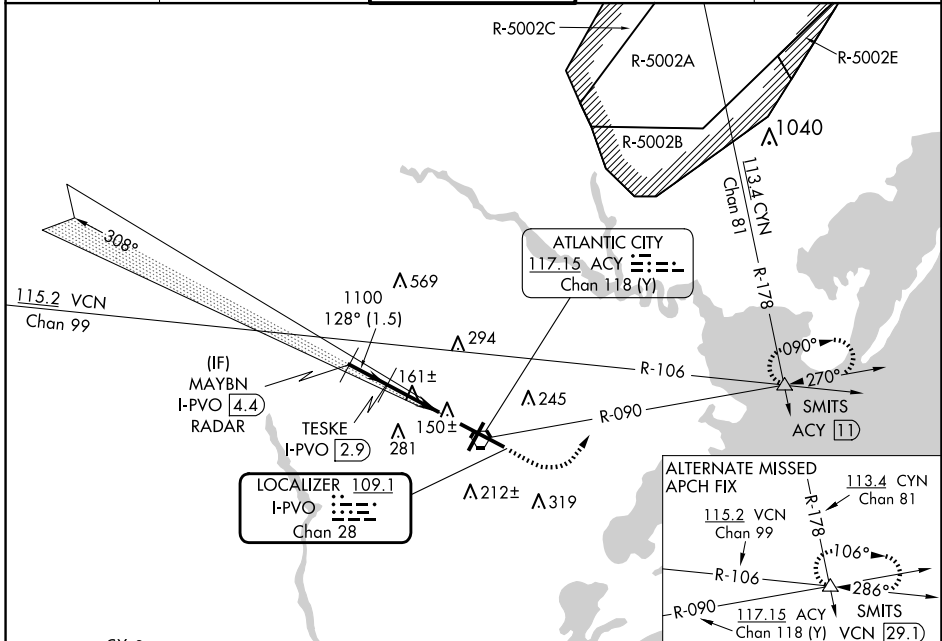
LOC/DME I-PVO <b>109.1</b> Chan <b>28</b>	APP CRS <b>128°</b>	Rwy ldg <b>10001</b> TDZE <b>75</b> Apt Elev <b>75</b>
---	------------------------	--

# COPTER ILS or LOC/DME RWY 13

ATLANTIC CITY INTL (ACY)

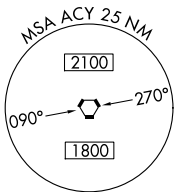
MALS R NA	MISSED APPROACH: Climb to 600 then climbing left turn to 2000 via ACY R-090 to SMITS INT/ACY 11 DME and hold.
--------------	---

ATIS <b>125.725 316.15</b>	ATLANTIC CITY APP CON <b>124.6 327.125</b>	ATLANTIC CITY TOWER <b>120.3 239.0</b>	GND CON <b>121.9 284.6</b>	CLNC DEL <b>127.85 353.775</b>
-------------------------------	---	---	-------------------------------	-----------------------------------

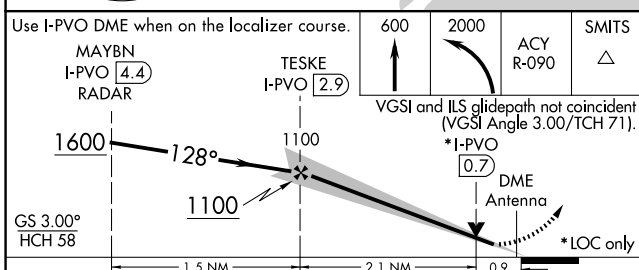


NE-2, 20 FEB 2025 to 20 MAR 2025

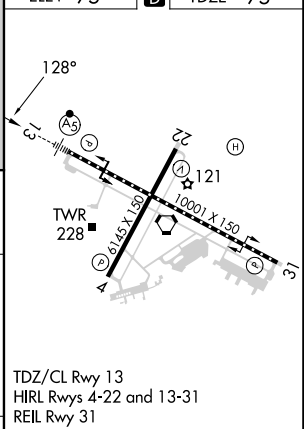
NE-2, 20 FEB 2025 to 20 MAR 2025



## RADAR REQUIRED



ELEV 75	TDZE 75
---------	---------



CATEGORY	COPTER					FAF to MAP 3 NM					
H-ILS 13	275/12	200 (200-½)				Knots	45	60	75	90	105
H-LOC 13	420/24	345 (400-½)				Min:Sec	4:00	3:00	2:24	2:00	1:43