

WAAS CH <b>87118</b> <b>W01A</b>	APP CRS <b>012°</b>	Rwy ldg <b>5000</b> TDZE <b>324</b> Apt Elev <b>328</b>
--	------------------------	--

# RNAV (GPS) RWY 1

FLOYD BENNETT MEML (GFL)

**⚠** For uncompensated Baro-VNAV systems, LNAV/VNAV NA below -18°C (0°F) or above 54°C (130°F). DME/DME RNP-0.3 NA. When local altimeter setting not received use Albany altimeter setting and increase all DA 91 feet and all MDA 100 feet; increase LNAV/VNAV all Cats ½ SM, LNAV Cat C/D and Circling Cat C visibility ¼ SM. For inoperative ALS when using Albany altimeter setting, increase LPV all Cats visibility to ½ SM. Baro-VNAV and VDP NA when using Albany altimeter setting. Circling Rwy 12, 30 NA at night. Rwy 12, 30 helicopter visibility reduction below 1 SM NA.

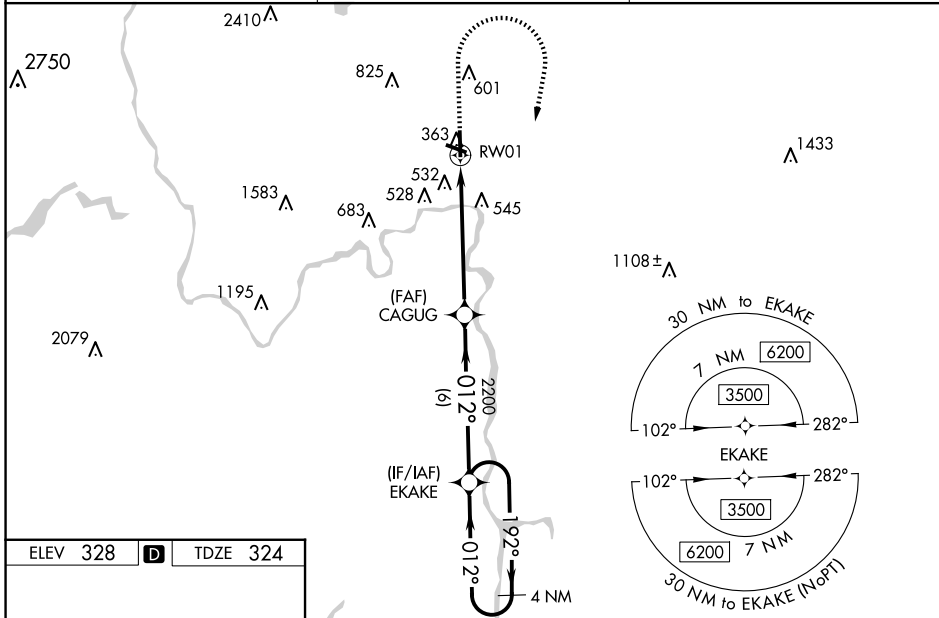
MALSR



**MISSED APPROACH:**  
Climb to 900 then climbing right turn to 3500 direct EKAKE and hold.

**❄** -19°C

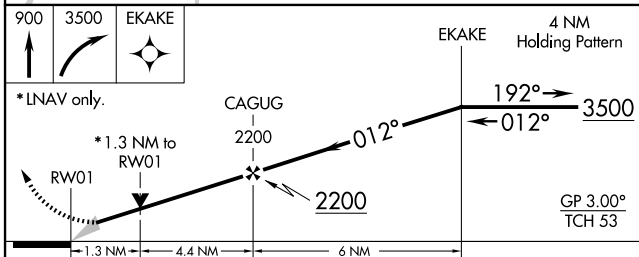
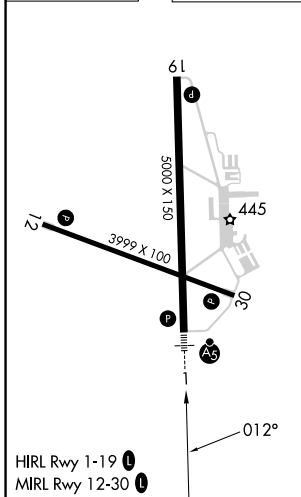
ASOS <b>119.925</b>	ALBANY APP CON <b>132.825 307.2</b>	UNICOM <b>123.0 (CTAF) 0</b>
------------------------	--	---------------------------------



NE-2, 20 FEB 2025 to 20 MAR 2025

NE-2, 20 FEB 2025 to 20 MAR 2025

ELEV 328	<b>D</b>	TDZE 324
----------	----------	----------



CATEGORY	A	B	C	D
LPV DA		524-½	200 (200-½)	
LNAV/VNAV DA		835-1¼	511 (600-1¼)	
LNAV MDA	800-½	476 (500-½)	800-1	476 (500-1)
<b>C</b> CIRCLING	840-1 512 (600-1)	860-1 532 (600-1)	940-1¾ 612 (700-1¾)	1960-3 1632 (1700-3)