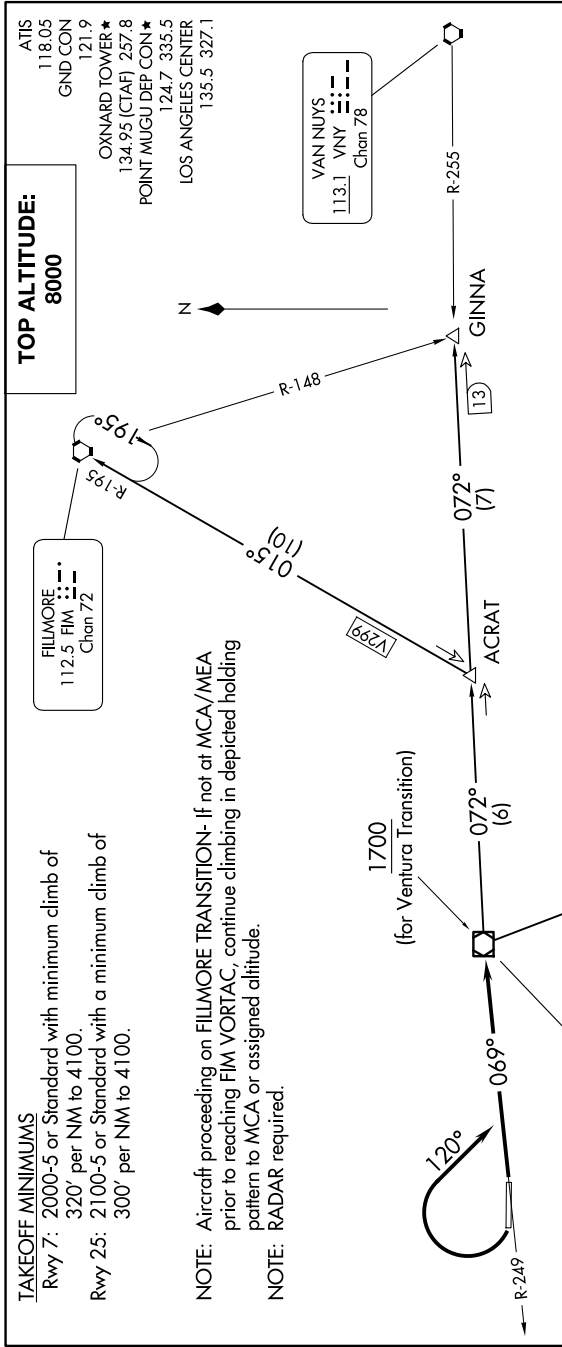


CAMARILLO SIX DEPARTURE

SW-3, 20 FEB 2025 to 20 MAR 2025



DEPARTURE ROUTE DESCRIPTION

TAKEOFF RUNWAY 7: Climb to 8000 (or assigned altitude) on CMA R-249 to CMA VOR/DME, thence. . . .

TAKEOFF RUNWAY 25: Climbing right turn to 8000 (or assigned altitude) on heading 120° to intercept CMA R-249 to CMA VOR/DME, thence. . . . on (assigned route) or (transition).

FILLMORE TRANSITION (CMA6.FIM): From over CMA VOR/DME via CMA R-072 to ACRAV INT then via FIM R-195 to FIM VORTAC.
GINNA TRANSITION (CMA6.GINNA): From over CMA VOR/DME via CMA R-072 to GINNA INT.
VENTURA TRANSITION (CMA6.VTU): From over CMA VOR/DME via VTU R-324 to VTU VOR/DME.

NOTE: Chart not to scale.

SW-3, 20 FEB 2025 to 20 MAR 2025

CAMARILLO SIX DEPARTURE