

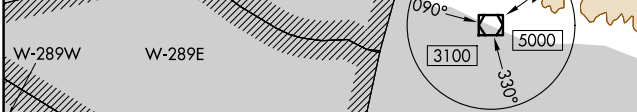
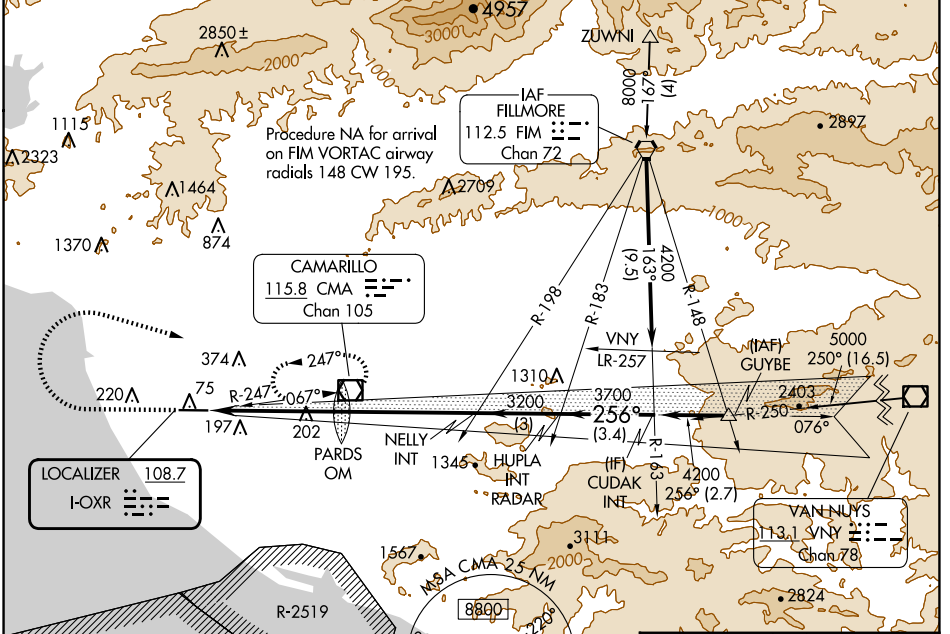
LOC I- OXR	APP CRS 256°	Rwy ldg TDZE Apt Elev	5500 44 45
108.7			

ILS or LOC RWY 25

OXNARD (OXR)

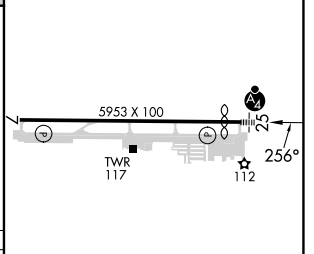
	Rwy 25 helicopter visibility reduction below 3/4 SM NA. Autopilot coupled approach NA below 1086. Inop table does not apply.		MISSED APPROACH: Climb to 1900 then climbing right turn to 4400 direct CMA VOR/DME and hold, continue climb-in-hold to 4400.

ATIS 118.05	POINT MUGU APP CON * 124.7 335.5	OXNARD TOWER * 134.95 (CTAF) 0 257.8	GND CON 121.9
-----------------------	--	--	-------------------------



ELEV 45	D TDZE 44
---------	------------------

	PARDS OM 1660	NELY INT 3200	HUPLA INT 3700	CUDAK INT 4200
	4.9 NM	4.8 NM	3 NM	3.4 NM



CATEGORY	A	B	C	D
S-ILS 25		424-1 380 (400-1)		
S-LOC 25		460-1 416 (500-1)		
CIRCLING	500-1 455 (600-1)	520-1 475 (500-1)	700-1 3/4 655 (700-1 3/4)	720-2 1/4 675 (700-2 1/4)

REIL Rwy 7 MRL Rwy 7-25												
FAF to MAP 9.7 NM												
<table border="1"> <tr> <td>Knots</td> <td>60</td> <td>90</td> <td>120</td> <td>150</td> <td>180</td> </tr> <tr> <td>Min:Sec</td> <td>9:42</td> <td>6:28</td> <td>4:51</td> <td>3:53</td> <td>3:14</td> </tr> </table>	Knots	60	90	120	150	180	Min:Sec	9:42	6:28	4:51	3:53	3:14
Knots	60	90	120	150	180							
Min:Sec	9:42	6:28	4:51	3:53	3:14							

SW-3, 20 FEB 2025 to 20 MAR 2025

SW-3, 20 FEB 2025 to 20 MAR 2025