

VOR RWY 6

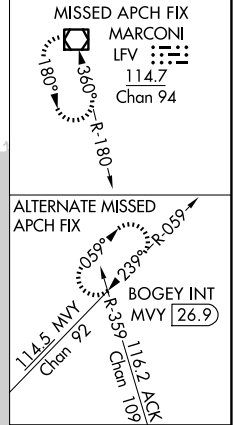
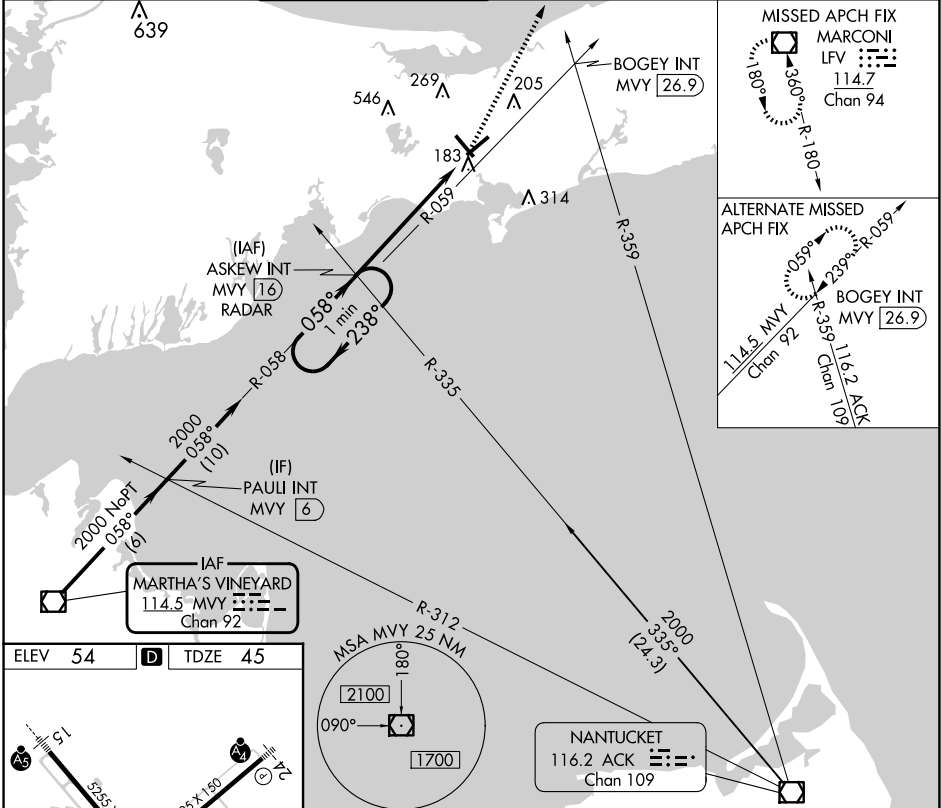
CAPE COD GATEWAY (HYA)

VOR/DME M ^{VY}	APP CRS	Rwy Idg	5019
114.5	058°	TDZE	45
Chan 92		Apf Elev	54

⚠ When local altimeter setting not received, use Chatham altimeter setting and increase all MDAs 40 feet and S-6 Cat A and Circling Cat C/D visibility 1/4 SM.
⚠ Rwy 6 helicopter visibility reduction below 3/4 SM NA. Circling Rwy 24 at night, operational VGSI required, remain on or above VGSI glidepath until threshold.

MISSED APPROACH: Climb to 2000 direct LFV VOR/DME and hold, continue climb-in-hold to 3000.

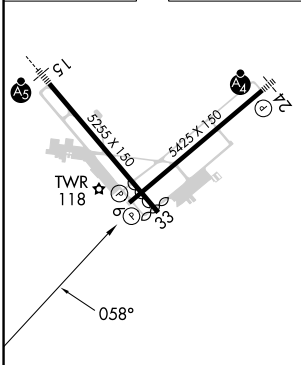
ATIS 123.8	BOSTON APP CON 118.2 284.6	HYANNIS TOWER * 119.5 (CTAF) 257.8	GND CON 118.45	CLNC DEL 125.15	CLNC DEL 120.125 (When twr closed)	UNICOM 122.95
----------------------	--------------------------------------	--	--------------------------	---------------------------	---	-------------------------



NE-1, 20 FEB 2025 to 20 MAR 2025

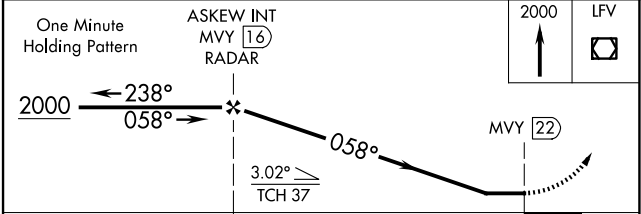
NE-1, 20 FEB 2025 to 20 MAR 2025

ELEV 54	D	TDZE 45
---------	----------	---------



REIL Rwy 6
 HIRL Rwys 6-24 and 15-33
 FAF to MAP 6 NM

Knots	60	90	120	150	180
Min:Sec	6:00	4:00	3:00	2:24	2:00



CATEGORY	A	B	C	D
S-6	900-1 855 (900-1)	900-1 1/4 855 (900-1 1/4)	900-2 1/2 855 (900-2 1/2)	855 (900-2 1/2)
<input checked="" type="checkbox"/> CIRCLING	900-1 1/4	846 (900-1 1/4)	900-2 1/2 846 (900-2 1/2)	900-2 3/4 846 (900-2 3/4)

VOR RWY 6