

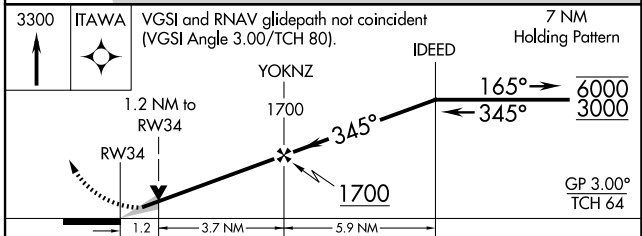
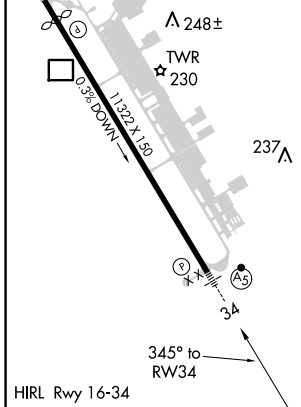
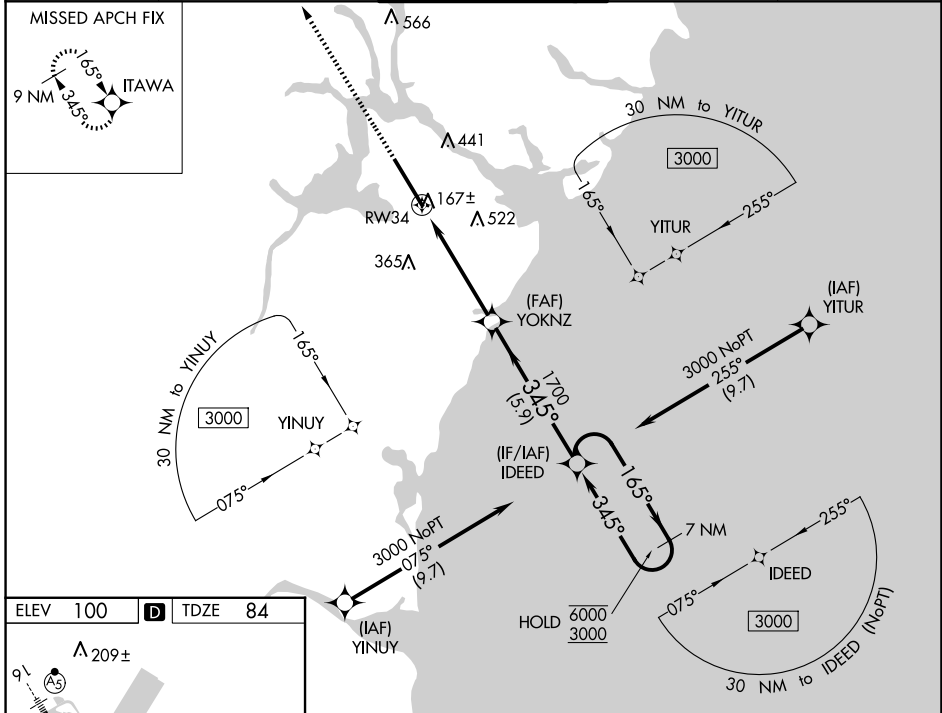
WAAS Ch 97323 W34A	APP CRS 345°	Rwy Idg TDZE Apt Elev	11321 84 100
--	------------------------	-----------------------------	---

RNAV (GPS) RWY 34

PORTSMOUTH INTL AT PEASE (PSM)

RNP APCH - GPS.		MALSRL	MISSED APPROACH: Climb to 3300 direct ITAWA and hold, continue climb-in-hold to 3300
<p>▽ Circling NA east of Rwy 16-34. For uncompensated Baro-VNAV systems, LNAV/VNAV NA below -15°C or above 54°C. For inop ALS, increase LPV Cat E visibility to RVR 4000; increase LNAV/VNAV all Cats visibility to RVR 4500; increase LNAV Cat E visibility to 1 3/8 SM.</p>			

ATIS 132.05 273.5	BOSTON APP CON 125.05 269.4	PORTSMOUTH TOWER 128.4 269.0	GND CON 120.95 275.8	CLNC DEL 335.8
-----------------------------	---------------------------------------	--	--------------------------------	--------------------------



CATEGORY	A	B	C	D	E
LPV DA		284/24	200 (200-1/2)		
LNAV/VNAV DA		361/24	277 (300-1/2)		
LNAV MDA	540/24	456 (500-1/2)	540/45	456 (500-7/8)	
CIRCLING	540-1	560-1	680-1 1/2	780-2 1/4	800-2 1/2
	440 (500-1)	460 (500-1)	580 (600-1 1/2)	680 (700-2 1/4)	700 (700-2 1/2)

NE-1, 20 FEB 2025 to 20 MAR 2025

NE-1, 20 FEB 2025 to 20 MAR 2025