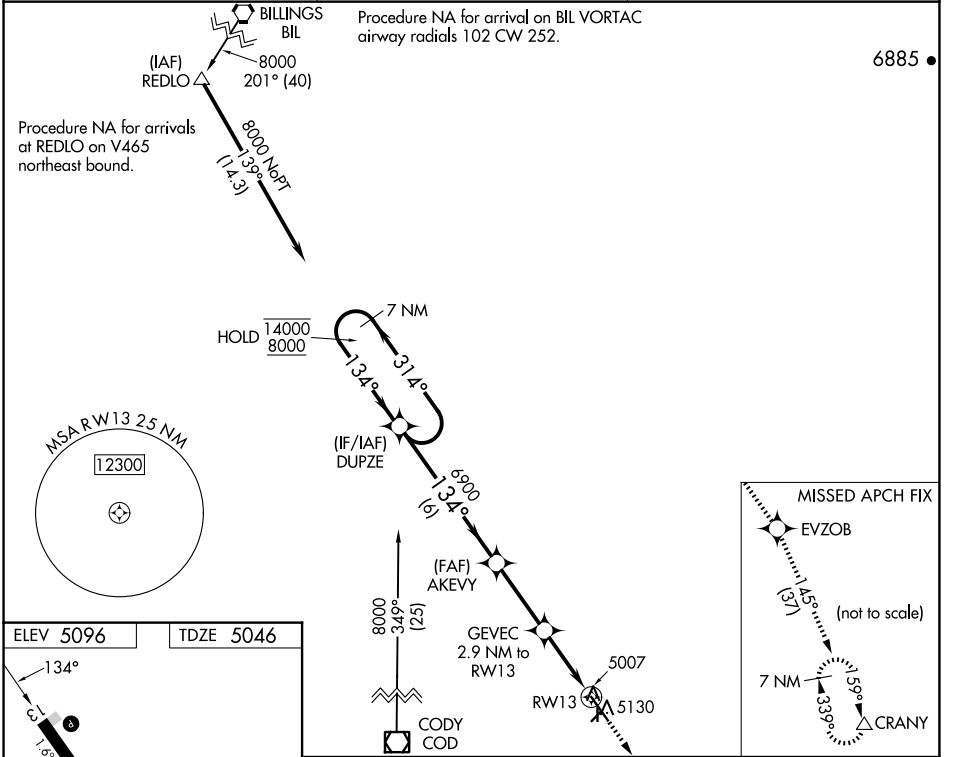


WAAS CH <b>90233</b> <b>W13A</b>	APP CRS <b>134°</b>	Rwy Idg TDZE Apt Elev	<b>6200</b> <b>5046</b> <b>5096</b>
--	------------------------	-----------------------------	---

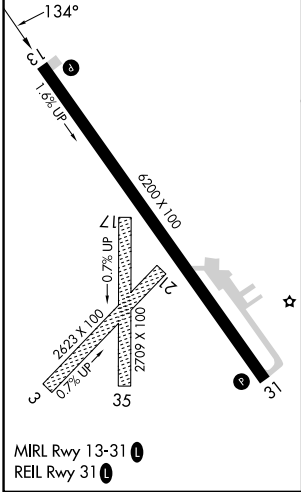
# RNAV (GPS) RWY 13

POWELL MUNI (POY)

RNP APCH.		MISSED APPROACH: Climb to 8500 direct EVZOB and on track 145° to CRANY and hold.
<b>NA</b>	Circling NA to Rwys 3, 17, 21 and 35. For uncompensated Baro-VNAV systems, LNAV/VNAV NA below -25°C or above 51°C. Baro-VNAV and VDP NA when using Cody altimeter setting. When local altimeter setting not received, use Cody altimeter setting and increase all DA 54 feet and all MDA 60 feet.	
AWOS-3 <b>119.275</b>	SALT LAKE CENTER <b>127.75 351.9</b>	UNICOM <b>122.7 (CTAF)</b>



ELEV 5096	TDZE 5046
-----------	-----------



7 NM Holding Pattern	DUPZE	AKEYY	8500 EVZOB	tr 145°	CRANY
14000 ← 314°	8000 ← 134°	6900 ← 134°	GEVEC 2.9 NM to RWY 13	*LNAV only	*5940
GP 3.00° TCH 38	6 NM	3 NM	2.2 NM	0.7	

NW-1, 20 FEB 2025 to 20 MAR 2025

NW-1, 20 FEB 2025 to 20 MAR 2025