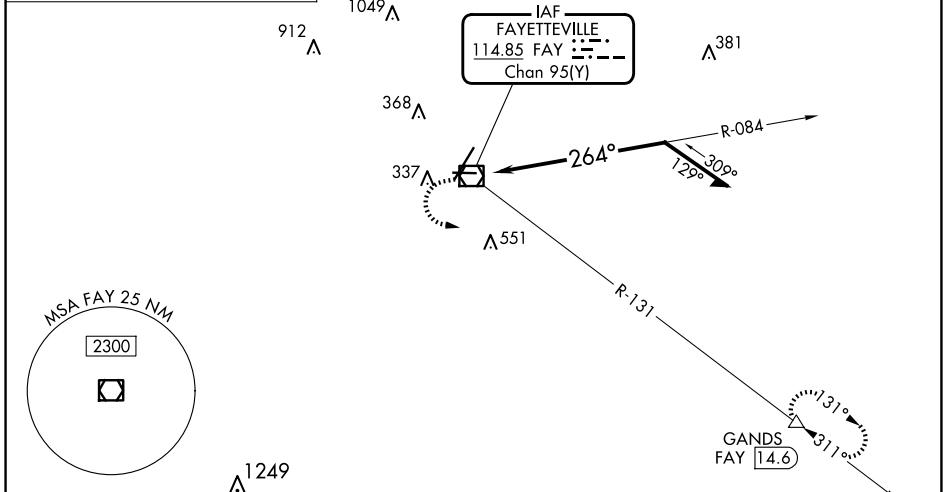
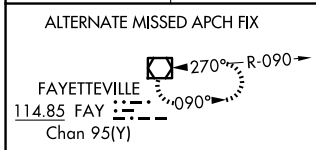


VOR/DME FAY 114.85 Chan 95(Y)	APP CRS 264°	Rwy Idg 4801 TDZE 188 Apt Elev 189
--	------------------------	---

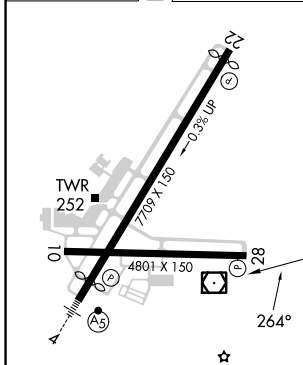
VOR RWY 28

FAYETTEVILLE RGNL/GRANNIS FLD (FAY)

DME required.		MISSED APPROACH: Climb to 1100 then climbing left turn to 3000 on FAY VOR/DME R-131 to GANDS/FAY 14.6 DME and hold.	
ATIS 121.25	FAYETTEVILLE APP CON 133.0 290.25	FAYETTEVILLE TOWER 118.3 269.2	GND CON 121.7 348.6



ELEV 189	D	TDZE 188
----------	----------	----------



HIRL Rwy 4-22	MIRL Rwy 10-28	REIL Rwy 10, 22 and 28
---------------	----------------	------------------------

1100	3000	GANDS	FAY VOR/DME	Remain within 10 NM
↑	FAY R-131	△	084°	2000

CATEGORY	A	B	C	D
S-28	700-1 512 (600-1)		700-1 $\frac{3}{8}$ 512 (600-1 $\frac{3}{8}$)	
C CIRCLING	700-1 511 (600-1)		860-2 671 (700-2)	860-2 $\frac{1}{4}$ 671 (700-2 $\frac{1}{4}$)

SE-2, 20 FEB 2025 to 20 MAR 2025

SE-2, 20 FEB 2025 to 20 MAR 2025