

LOC I-RIW <b>110.5</b>	APP CRS <b>284°</b>	Rwy Idg TDZE Apt Elev	<b>8204</b> <b>5459</b> <b>5516</b>
---------------------------	------------------------	-----------------------------	---

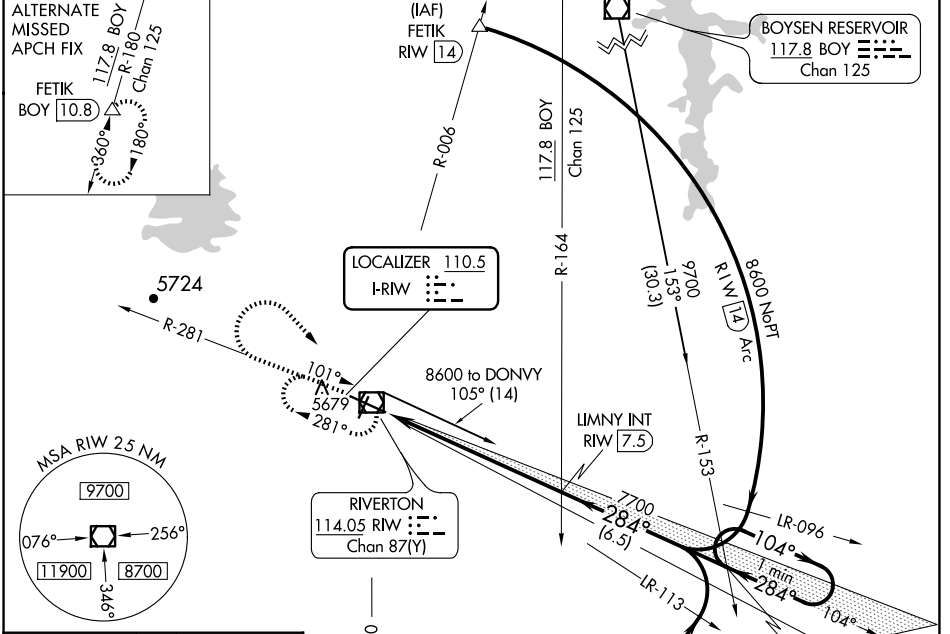
# ILS or LOC RWY 28

CENTRAL WYOMING RGNL (RIW)

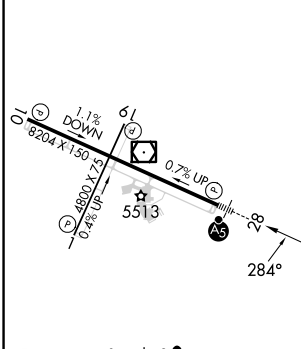
**NA** When local altimeter setting not received, use Lander altimeter setting: increase DA to 5713 feet; increase all MDA 60 feet and S-LOC 28 Cat C and D visibility ¼ mile. For inop MALSRL, when using Lander altimeter setting, increase S-ILS 28 all Cats visibility to ¾ mile and S-LOC 28 Cat C and D visibility to 1 ½ mile. VDP NA when using Lander altimeter setting.

**MALSRL** MISSED APPROACH: Climb to 6800 then climbing right turn to 7700 direct RIW VOR/DME and hold, continue climb-in-hold to 7700.

<b>ASOS</b> <b>121.425</b>	<b>SALT LAKE CENTER</b> <b>133.25 285.6</b>	<b>UNICOM</b> <b>122.8 (CTAF)</b>
-------------------------------	--	--------------------------------------



ELEV 5516	<b>D</b>	TDZE 5459
-----------	----------	-----------



REIL Rwy 1, 10 and 19	MIRL Rwy 1-19	HIRL Rwy 10-28			
FAF to MAP 6.9 NM					
Knots	60	90	120	150	180
Min:Sec	6:54	4:36	3:27	2:46	2:18

	6800	7700	RIW	LIMNY INT RIW 7.5	DONVY INT RIW 14	One Minute Holding Pattern
	↑	↷	□			
			RIW 1.8	7700	104°	8600
			RIW 0.6	284°	284°	GS 3.00° TCH 50
			-1.2	5.7 NM	6.5 NM	
CATEGORY	A	B	C	D		
S-ILS 28		5659-½	200 (200-½)			
S-LOC 28	5880-½	421 (400-½)	5880-¾	421 (400-¾)		
<b>C</b> CIRCLING	6000-1	484 (500-1)	6000-1½	484 (500-1½)	6120-2	604 (700-2)

NW-1, 20 FEB 2025 to 20 MAR 2025

NW-1, 20 FEB 2025 to 20 MAR 2025