

| | | |
|---|------------------------|---|
| VOR/DME R1W 114.05 Chan 87(Y) | APP CRS 101° | Rwy Idg 8204 TDZE 5516 Apt Elev 5516 |
|---|------------------------|---|

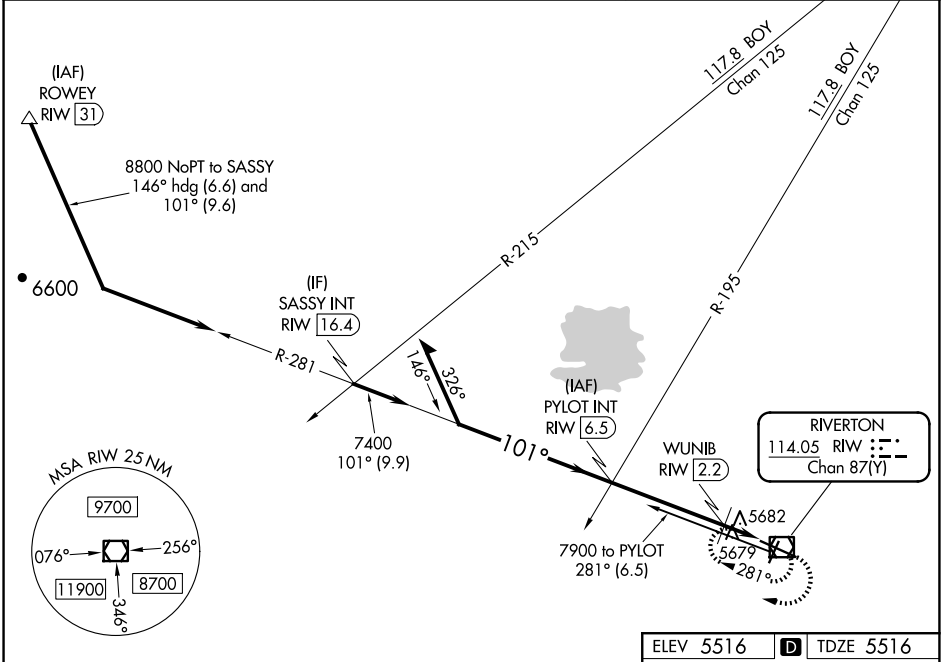
VOR RWY 10

CENTRAL WYOMING RGNL (R1W)

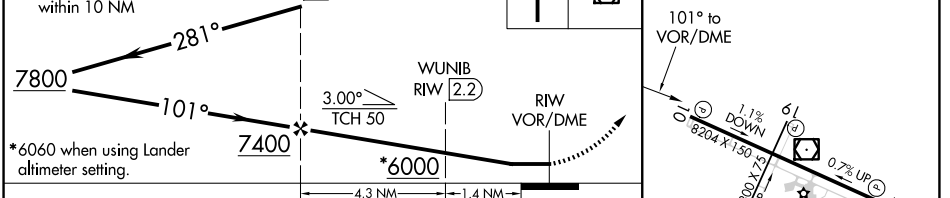
⚠ When local altimeter setting not received, use Lander altimeter setting and increase all MDA 60 feet and increase S-10 Cat C and D visibility ¼ mile and Circling Cat C visibility ½ mile, increase WUNIB fix minimums Cat C and D visibility ½ mile. Rwy 10 helicopter visibility reduction below ¾ SM NA.

MISSED APPROACH: Climb to 7900 in R1W VOR/DME holding pattern.

| | | |
|------------------------|---|---------------------------------|
| ASOS 121.425 | SALT LAKE CENTER 133.25 285.6 | UNICOM 122.8 (CTAF) 0 |
|------------------------|---|---------------------------------|



| | |
|-----------|--------------------|
| ELEV 5516 | D TDZE 5516 |
|-----------|--------------------|



| CATEGORY | A | B | C | D |
|-----------------------------------|--------|-------------|----------|--|
| S-10 | 6000-1 | 484 (500-1) | 6000-1 ¾ | 484 (500-1 ¾) |
| C CIRCLING | 6000-1 | 484 (500-1) | 6000-1 ½ | 6120-2 484 (500-1 ½) 604 (600-2) |
| WUNIB FIX MINIMUMS (DME REQUIRED) | | | | |
| S-10 | 5940-1 | 424 (500-1) | 5940-1 ¼ | 424 (500-1 ¼) |
| C CIRCLING | 6000-1 | 484 (500-1) | 6000-1 ½ | 6120-2 484 (500-1 ½) 604 (700-2) |

REIL Rws 1, 10, and 19 0

MIRL Rwy 1-19 0

HIRL Rwy 10-28 0

NW-1, 20 FEB 2025 to 20 MAR 2025

NW-1, 20 FEB 2025 to 20 MAR 2025