

VOR/DME RIW 114.05 Chan 87(Y)	APP CRS 293°	Rwy Idg TDZE Apt Elev	8204 5459 5516
--	------------------------	-----------------------------	---

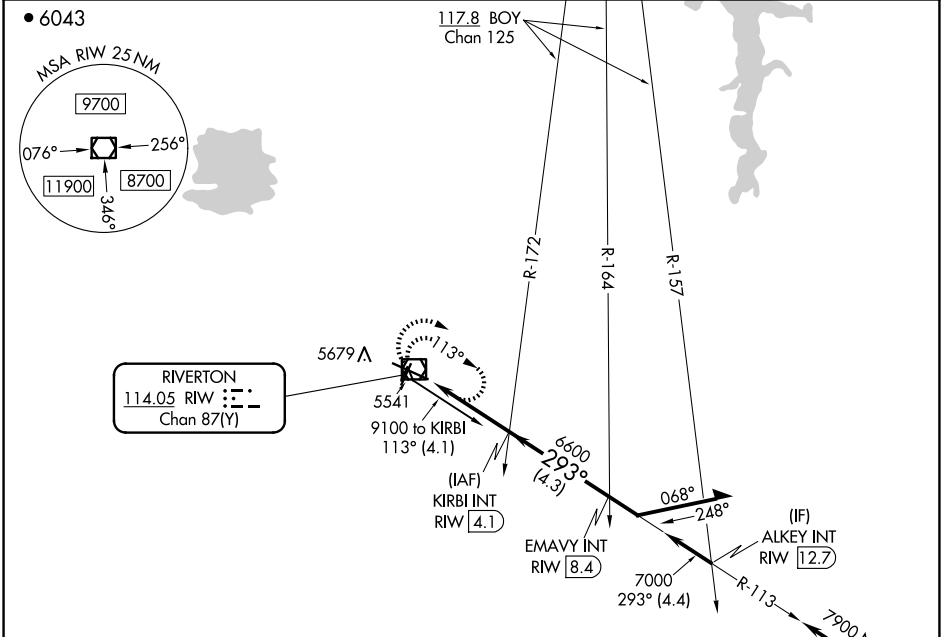
VOR RWY 28

CENTRAL WYOMING RGNL (RIW)

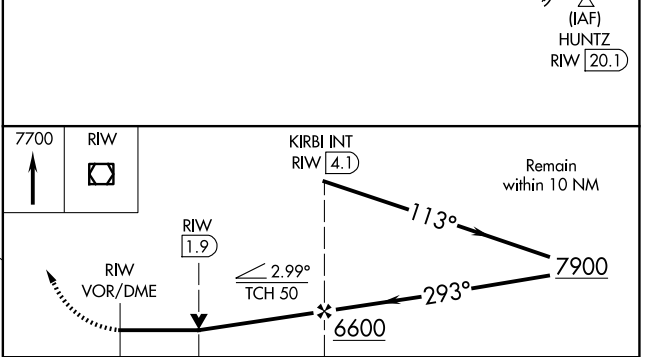
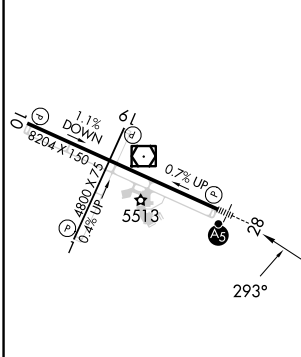
⚠ When local altimeter setting not received, use Lander altimeter setting and increase all MDA 60 feet. VDP NA when using Lander altimeter setting. For inop MALSR, increase S-28 Cat C and D visibility to 1½ miles.

MALSR MISSED APPROACH: Climb to 7700 in RIW VOR/DME holding pattern.

ASOS 121.425	SALT LAKE CENTER 133.25 285.6	UNICOM 122.8 (CTAF)
------------------------	---	-------------------------------



ELEV 5516	D	TDZE 5459
-----------	----------	-----------



CATEGORY	A	B	C	D
S-28	5920-½ 461 (500-½)		5920-1 461 (500-1)	
C CIRCLING	6000-1 484 (500-1)		6000-1½ 484 (500-1½)	6120-2 604 (700-2)

NW-1, 20 FEB 2025 to 20 MAR 2025

NW-1, 20 FEB 2025 to 20 MAR 2025