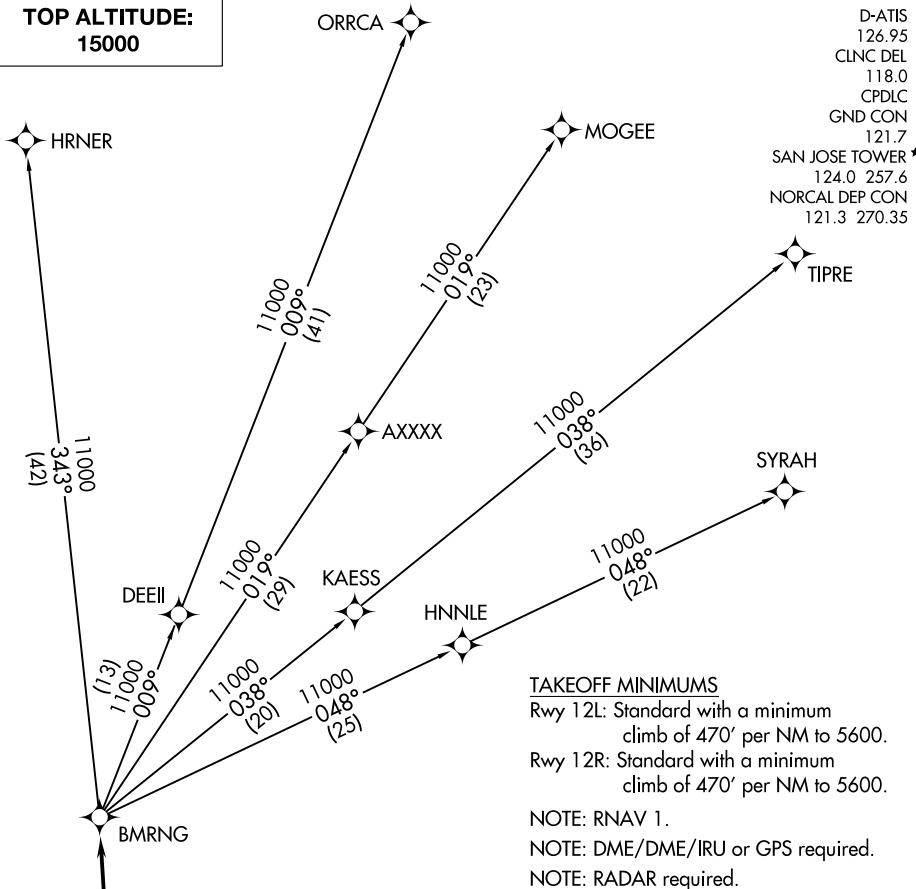


BMRNG FOUR DEPARTURE (RNAV)

**TOP ALTITUDE:
15000**



D-ATIS 126.95
 CLNC DEL 118.0
 CPDLC 118.0
 GND CON 121.7
 SAN JOSE TOWER * 124.0 257.6
 NORCAL DEP CON 121.3 270.35

TAKEOFF MINIMUMS

Rwy 12L: Standard with a minimum climb of 470' per NM to 5600.
 Rwy 12R: Standard with a minimum climb of 470' per NM to 5600.

NOTE: RNAV 1.
 NOTE: DME/DME/IRU or GPS required.
 NOTE: RADAR required.

DEPARTURE ROUTE DESCRIPTION

TAKEOFF RUNWAYS 12L/R: Climb heading 126° or as assigned by ATC, expect RADAR vectors to cross GRRIF at or above 13000, then on track 343° to BMRNG, thence
 on (transition). Maintain 15000. Expect filed altitude 10 minutes after departure.

HRNER TRANSITION (BMRNG4.HRNER)

MOGEE TRANSITION (BMRNG4.MOGEE)

ORRCA TRANSITION (BMRNG4.ORRCA)

SYRAH TRANSITION (BMRNG4.SYRAH)

TIPRE TRANSITION (BMRNG4.TIPRE)

NOTE: Chart not to scale.

BMRNG FOUR DEPARTURE (RNAV)

SW-2, 20 FEB 2025 to 20 MAR 2025

SW-2, 20 FEB 2025 to 20 MAR 2025