

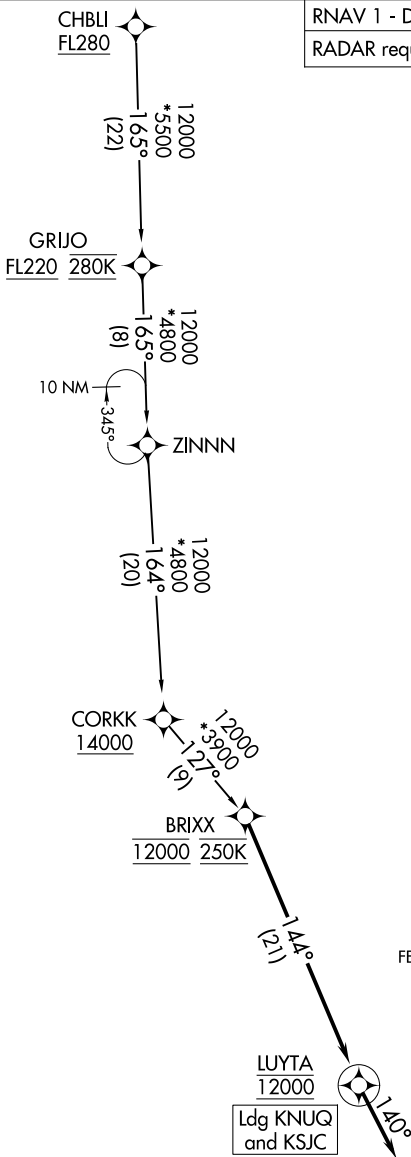
BRXX FOUR ARRIVAL (RNAV)

AL-693 (FAA)

SAN JOSE, CALIFORNIA

OAKLAND CENTER
 125.85 323.0
 NORCAL APP CON
 133.95 317.6
 NUQ ATIS
 124.175 283.0
 SJC D-ATIS
 126.95
 NUQ GND CON
 121.85 278.95
 SJC GND CON
 121.7
 MOFFETT TOWER*
 119.55 259.65
 SAN JOSE TOWER*
 124.0 257.6

RNAV 1 - DME/DME/IRU or GPS.
 RADAR required.



SW-2, 20 FEB 2025 to 20 MAR 2025

SW-2, 20 FEB 2025 to 20 MAR 2025

NOTE: Chart not to scale.

ARRIVAL ROUTE DESCRIPTION

CHBLI TRANSITION (CHBLI.BRXX4)

LANDING KSJC/KNUQ: From BRIXX on track 144° to cross LUYTA at 12000, then on track 140°. Expect RADAR vectors to final approach course.

BRIXX FOUR ARRIVAL (RNAV)

SAN JOSE, CALIFORNIA