

LOC/DME I-SJC <b>110.9</b> Chan <b>46</b>	APP CRS <b>306°</b>	Rwy Idg <b>7614</b> TDZE <b>57</b> Apt Elev <b>62</b>
---	------------------------	---

# ILS RWY 30L (SA CAT I & II)

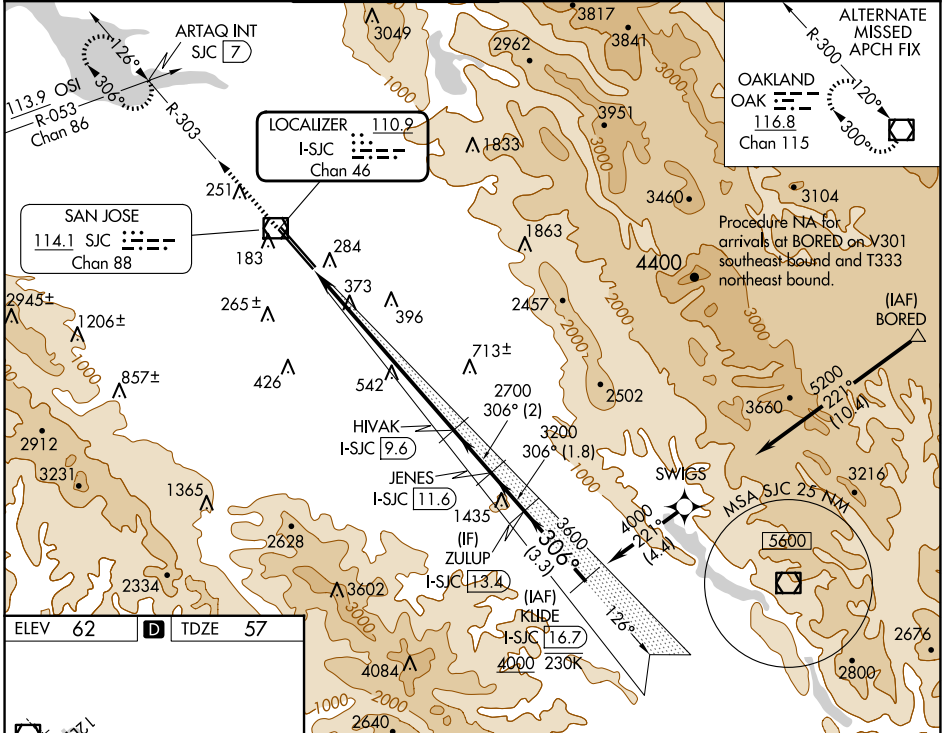
## NORMAN Y MINETA SAN JOSE INTL (SJC)

RNAV 1-GPS or RADAR required for procedure entry. DME required.  
From BORED: RNAV 1-GPS required.

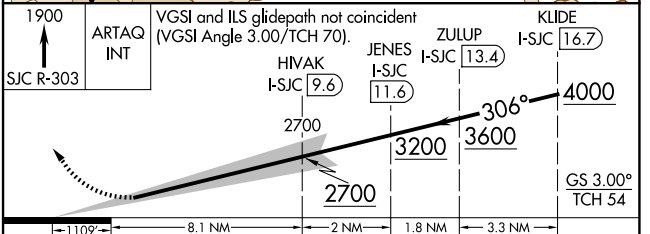
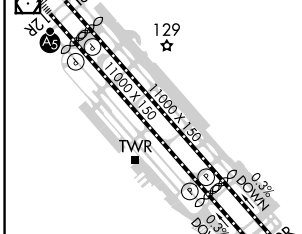
**MALSR** MISSED APPROACH: Climb to 1900 on SJC VOR/DME R-303 to ARTAQ INT/SJC 7 DME and hold.

**SA CAT I:** Requires specific OPSPEC, MSPEC, or LOA approval and use of HUD to DH.  
**SA CAT II:** Reduced lighting: requires specific OPSPEC, MSPEC, or LOA approval and use of autoland or HUD to touchdown. SA CAT I /II: Procedure NA when tower closed.

D-ATIS <b>126.95</b>	NORCAL APP CON <b>120.1 290.25</b>	SAN JOSE TOWER* <b>124.0</b> (CTAF) <b>257.6</b>	GND CON <b>121.7</b>	CLNC DEL <b>118.0</b>	CPDLC	UNICOM <b>122.95</b>
-------------------------	---------------------------------------	---	-------------------------	--------------------------	-------	-------------------------



ELEV 62	<b>D</b>	TDZE 57
---------	----------	---------



CATEGORY	A	B	C	D
S-ILS 30L	SA CAT I	RA 147/14	150 DA	207
S-ILS 30L	SA CAT II	RA 97/12	100 DA	157

**SA CATEGORY I & II ILS - SPECIAL AIRCREW AND AIRCRAFT CERTIFICATION REQUIRED**

SW-2, 20 FEB 2025 to 20 MAR 2025

SW-2, 20 FEB 2025 to 20 MAR 2025