

(LOUPE1.BMRNG) 24137

LOUPE ONE DEPARTURE (RNAV)

NORMAN Y MINETA SAN JOSE INTL (SJC)
SAN JOSE, CALIFORNIA

AL-693 (FAA)

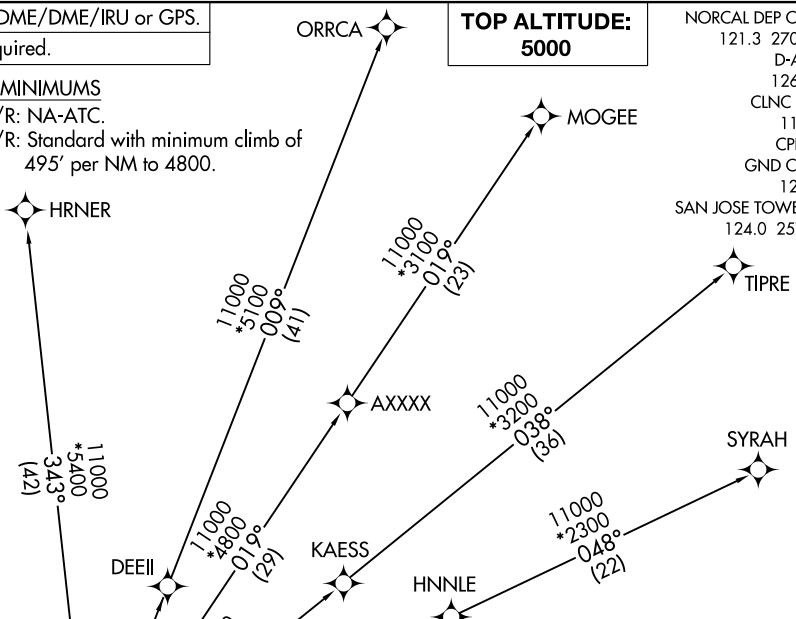
RNAV 1 - DME/DME/IRU or GPS.
RADAR required.

**TOP ALTITUDE:
5000**

NORCAL DEP CON 121.3 270.35
D-ATIS 126.95
CLNC DEL 118.0
CPDLC
GND CON 121.7
SAN JOSE TOWER* 124.0 257.6

TAKEOFF MINIMUMS

Rwys 12L/R: NA-ATC.
Rwys 30L/R: Standard with minimum climb of 495' per NM to 4800.



NOTE: Chart not to scale.

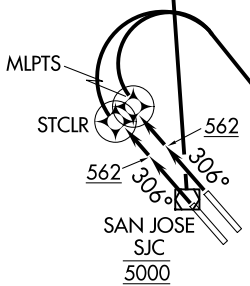
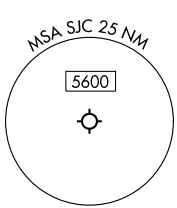
DEPARTURE ROUTE DESCRIPTION

TAKEOFF RUNWAY 30L: Climb on heading 306° to 562, then direct STCLR, then right turn direct LOUPE at 5000 at or below 230K, then on track 130°, for vectors to SJC VOR/DME, then on track 343° to BMRNG. Thence. . .

TAKEOFF RUNWAY 30R: Climb on heading 306° to 562, then direct MLPTS, then right turn direct LOUPE at 5000 at or below 230K, then on track 130°, for vectors to SJC VOR/DME, then on track 343° to BMRNG. Thence. . .

. . .on (transition). Maintain 5000, expect filed altitude 10 minutes after departure

HRNER TRANSITION (LOUPE1.HRNER)
MOGEE TRANSITION (LOUPE1.MOGEE)
ORRCA TRANSITION (LOUPE1.ORRCA)
SYRAH TRANSITION (LOUPE1.SYRAH)
TIPRE TRANSITION (LOUPE1.TIPRE)



NOTE: Do not turn direct SJC VOR/DME until instructed to do so by ATC.

SW-2, 20 FEB 2025 to 20 MAR 2025

SW-2, 20 FEB 2025 to 20 MAR 2025

LOUPE ONE DEPARTURE (RNAV)
(LOUPE1.BMRNG) 16MAY24

SAN JOSE, CALIFORNIA
NORMAN Y MINETA SAN JOSE INTL (SJC)