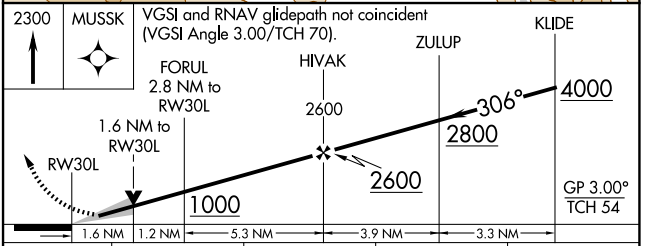
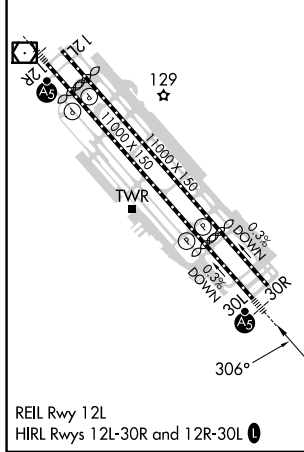
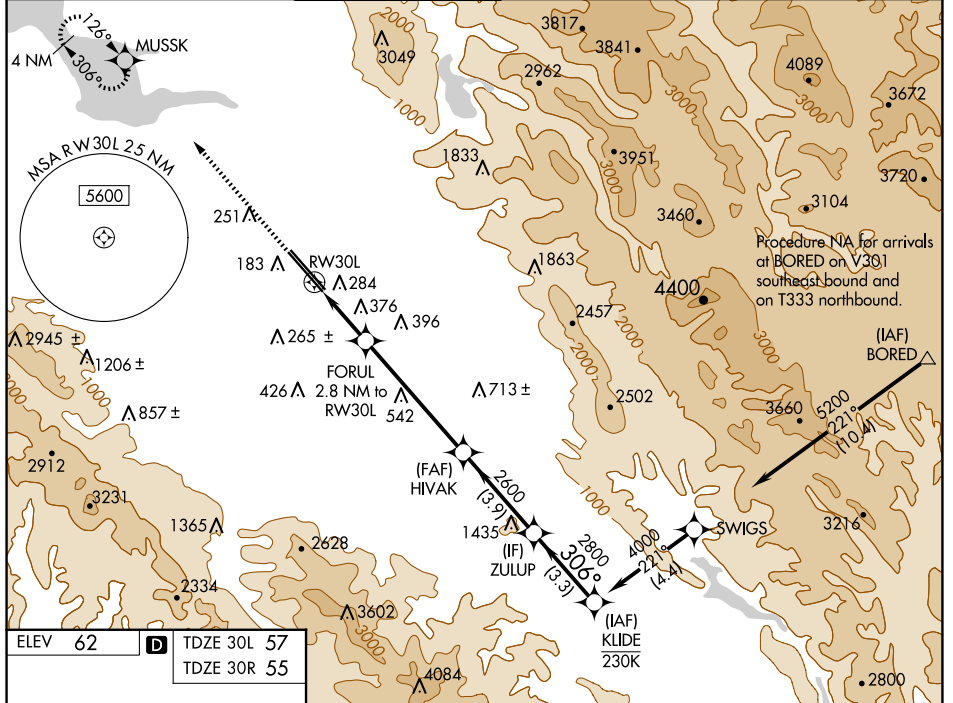


WAAS CH <b>97306</b> <b>W30A</b>	APP CRS <b>306°</b>	Rwy ldg TDZE Apt Elev	30L <b>7614</b> <b>57</b> <b>62</b>	30R <b>7597</b> <b>55</b> <b>62</b>
--	------------------------	-----------------------------	--	--

# RNAV (GPS) Y RWY 30L

NORMAN Y MINETA SAN JOSE INTL (SJC)

RNP APCH-GPS.				MALSR Rwy 30L	MISSED APPROACH: Climb to 2300 direct MUSSK and hold.	
<p>▼ For uncompensated Baro-VNAV systems, LNAV/VNAV NA below 1°C or above 54°C. For inop ALS, increase LNAV/VNAV all Cats visibility to 1½ SM. * RVR 1800 authorized with use of FD or AP or HUD to DA.</p>						
D-ATIS <b>126.95</b>	NORCAL APP CON <b>120.1 290.25</b>	SAN JOSE TOWER ★ <b>124.0 (CTAF) 257.6</b>	GND CON <b>121.7</b>	CLNC DEL <b>118.0</b>	CPDLC	UNICOM <b>122.95</b>



CATEGORY	A	B	C	D
LPV DA*		257/24	200 (200-½)	
LNAV/VNAV DA		540/50	483 (500-1)	
LNAV MDA	640/24	583 (600-½)	640-1¼	583 (600-1¼)
SIDESTEP 30R	640-1 585 (600-1)			

SW-2, 20 FEB 2025 to 20 MAR 2025

SW-2, 20 FEB 2025 to 20 MAR 2025