

WAAS CH 56629 W33A	APP CRS 326°	Rwy Idg TDZE Apf Elev	3327 66 67
--	------------------------	-----------------------------	---------------------------------------

RNAV (GPS) RWY 33

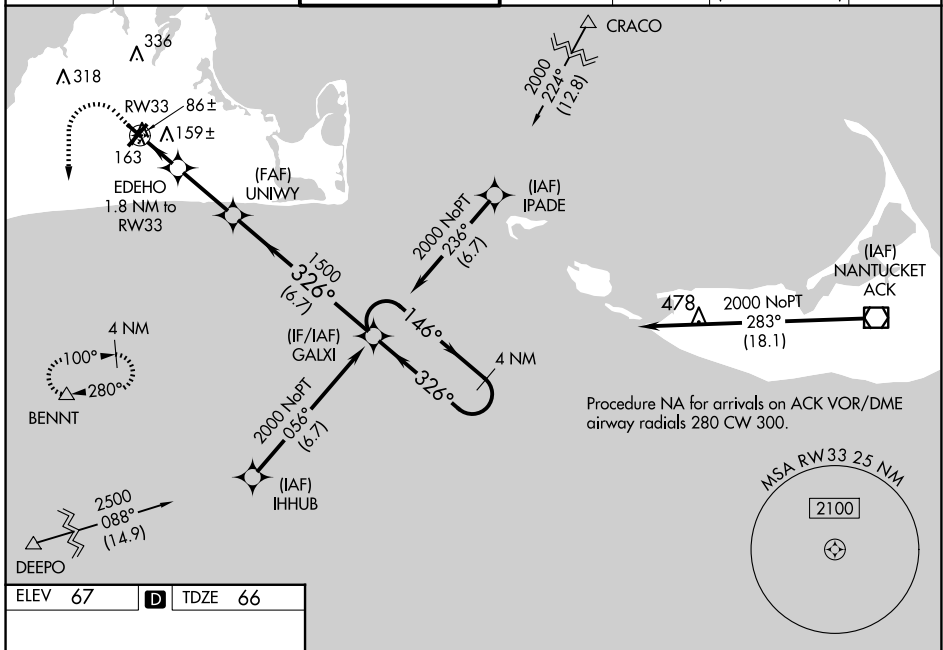
MARTHA'S VINEYARD (MVY)

RNP APCH.

⚠ Baro-VNAV NA when using Hyannis altimeter setting. For uncompensated Baro-VNAV systems, LNAV/VNAV NA below -15°C or above 43°C. Rwy 33 helicopter visibility reduction below 3/4 SM NA. When local altimeter setting not received, use Hyannis altimeter setting and increase LPV DA to 370 feet, LNAV/VNAV DA to 393 feet, and all visibility 1/8 SM, increase all MDA 60 feet and Cat C and D visibilities 1/4 SM. Circling Rwy 15 NA at night. VDP NA with Hyannis altimeter setting.

MISSED APPROACH:
Climb to 1400 then climbing left turn to 2000 direct BENNT and hold.

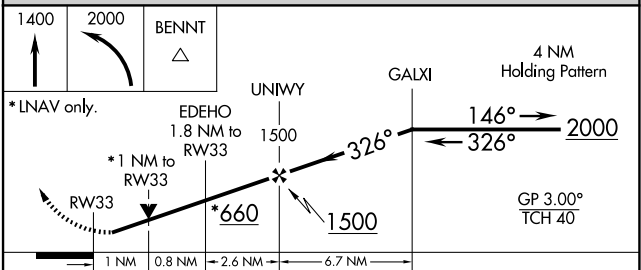
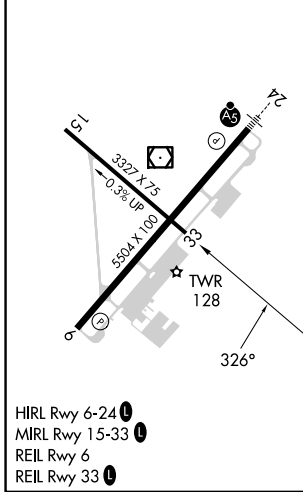
ATIS 126.25	BOSTON APP CON 133.75	VINEYARD TOWER * 121.4 (CTAF) 0	GND CON 124.35	CLNC DEL 124.35	CLNC DEL 119.7 (When twr closed)	UNICOM 122.95
-----------------------	---------------------------------	--	--------------------------	---------------------------	---	-------------------------



NE-1, 20 FEB 2025 to 20 MAR 2025

NE-1, 20 FEB 2025 to 20 MAR 2025

ELEV 67	D	TDZE 66
---------	----------	---------



CATEGORY	A	B	C	D
LPV DA		316-1	250 (300-1)	
LNAV/ VNAV DA		339-1	273 (300-1)	
LNAV MDA		420-1	354 (400-1)	
C CIRCLING	500-1 433 (500-1)	540-1 473 (500-1)	700-1 3/4 633 (700-1 3/4)	780-2 1/4 713 (800-2 1/4)