

VOR/DME M <sup>VY</sup>	APP CRS	Rwy Idg	<b>5504</b>
<b>114.5</b>	<b>050°</b>	TDZE	<b>58</b>
Chan <b>92</b>		Apt Elev	<b>67</b>

# VOR RWY 6

MARTHA'S VINEYARD (M<sup>VY</sup>)

▼ DME required. Rwy 6 helicopter visibility reduction below 3/4 SM NA.  
 VDP NA with Hyannis altimeter setting. When local altimeter setting not received, use Hyannis altimeter setting and increase all MDA 60 feet;  
 ▲ increase S-6 Cats C and D visibility 1/4 mile. Night landing: Rwy 15 NA.

MISSED APPROACH: Climb to 500 then climbing right turn to 2500 via M<sup>VY</sup> VOR/DME R-180 to CLAMY INT/ACK 23.9 DME and hold.

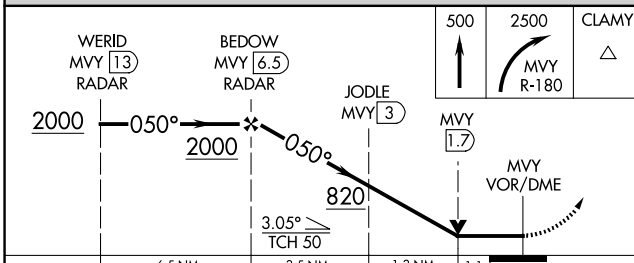
ATIS <b>126.25</b>	BOSTON APP CON <b>133.75</b>	VINEYARD TOWER * <b>121.4</b> (CTAF) <b>0</b>	GND CON <b>124.35</b>	CLNC DEL <b>124.35</b>	CLNC DEL <b>119.7</b> (When twr closed)	UNICOM <b>122.95</b>
-----------------------	---------------------------------	--	--------------------------	---------------------------	---	-------------------------



NE-1, 20 FEB 2025 to 20 MAR 2025

NE-1, 20 FEB 2025 to 20 MAR 2025

## RADAR REQUIRED



ELEV 67	D	TDZE 58
---------	---	---------

HIRL Rwy 6-24 **0**  
 MIRL Rwy 15-33 **0**  
 REIL Rwy 6  
 REIL Rwy 33 **0**

CATEGORY	A	B	C	D
S-6	440-1	382 (400-1)	440-1 1/8	382 (400-1 1/8)
<b>CIRCLING</b>	500-1 433 (500-1)	540-1 473 (500-1)	700-1 3/4 633 (700-1 3/4)	780-2 1/4 713 (800-2 1/4)