

WAAS CH 56405 W25A	APP CRS 254°	Rwy Idg TDZE Apt Elev	4558 812 813
--	------------------------	-----------------------------	---

RNAV (GPS) RWY 25

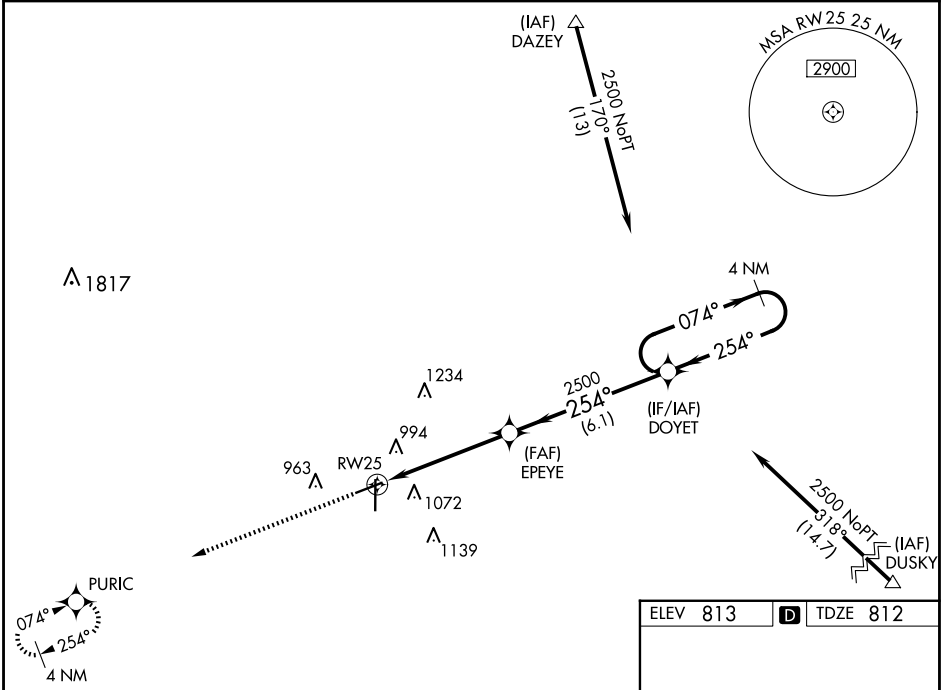
FINDLAY (F'DY)

RNP APCH-GPS.

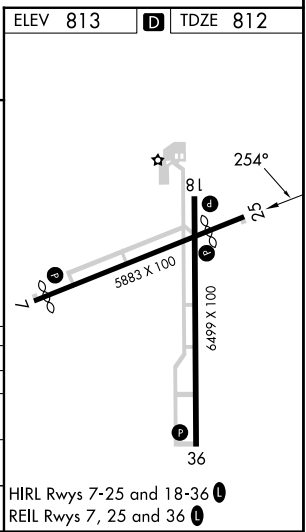
⚠ For uncompensated Baro-VNAV systems, LNAV/VNAV NA below -16°C or above 47°C. Baro-VNAV and VDP NA when using Lima Allen County altimeter setting. When local altimeter setting not received, use Lima Allen County altimeter setting; increase all DAs/MDAs 80 feet; increase LPV visibility 1/8 SM all Cats; increase LNAV Cat C/D and Circling Cat C/D visibility 1/4 SM. Circling Rwy 7 NA at night.

MISSED APPROACH: Climb to 2500 direct PURIC and hold.

ASOS 132.85	TOLEDO APP CON 120.8 317.55	UNICOM 122.725 (CTAF) 0
-----------------------	---------------------------------------	--



2500	PURIC	VGSI and RNAV glidepath not coincident (VGSI Angle 3.00/TCH 31).	4 NM Holding Pattern
*LNAV only			
*1.4 NM to RW25			
RW25		EPEYE 2500	DOYET 2500
1.4 NM		3.7 NM	6.1 NM
		254°	074°
		2500	2500
			GP 3.00° TCH 45
CATEGORY	A	B	C
LPV DA		1116-1	304 (400-1)
LNAV/VNAV DA		1411-2	599 (600-2)
LNAV MDA	1280-1	468 (500-1)	1280-1½ 468 (500-1½)
CIRCLING	1440-1	627 (700-1)	1440-1¾ 627 (700-1¾)



EC-2, 20 FEB 2025 to 20 MAR 2025

EC-2, 20 FEB 2025 to 20 MAR 2025