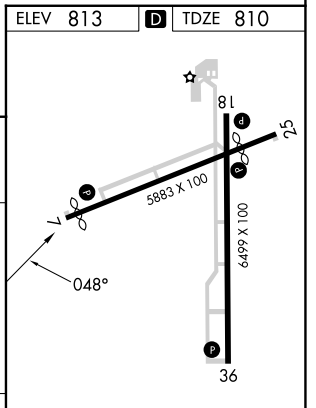
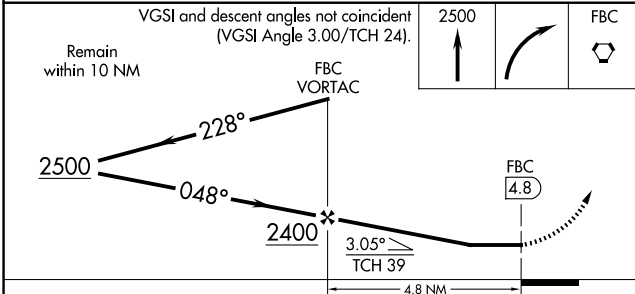
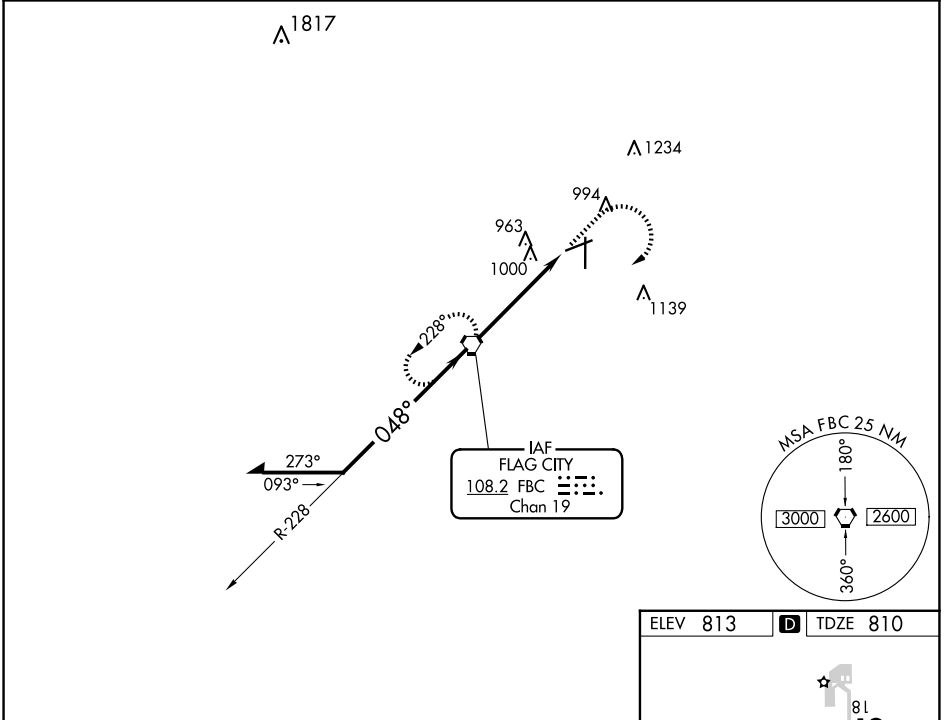


VORTAC FBC 108.2 Chan 19	APP CRS 048°	Rwy Idg 4558 TDZE 810 Apt Elev 813
--	------------------------	---

VOR RWY 7

FINDLAY (F'DY)

<p>⚠ Rwy 7 helicopter visibility reduction below 1 SM NA. When local altimeter setting not received, use Lima Allen County altimeter setting and increase all MDA 80 feet, and increase S-07 visibility Cat C/D 1/8 SM, and Circling visibility Cat C/D 1/4 SM. Straight-In Rwy 7 NA at night, Circling Rwy 7 NA at night.</p>		<p>MISSED APPROACH: Climb to 2500 then right turn direct FBC VORTAC and hold.</p>
ASOS 132.85	TOLEDO APP CON 120.8 317.55	UNICOM 122.725 (CTAF) ①



CATEGORY	A	B	C	D	HIRL Rwy 7-25 and 18-36 ① REIL Rwy 7, 25 and 36 ① FAF to MAP 4.8 NM
S-7	1260-1	450 (500-1)	1260-1 1/4 450 (500-1 1/4)	1260-1 1/2 450 (500-1 1/2)	
② CIRCLING	1440-1	627 (700-1)	1440-1 3/4 627 (700-1 3/4)	1540-2 1/4 727 (800-2 1/4)	Knots: 60 90 120 150 180 Min:Sec: 4:48 3:12 2:24 1:55 1:36