

WAAS CH 82623 W06A	APP CRS 061°	Rwy Idg TDZE 1152 Apt Elev 1190
--	------------------------	---

RNAV (GPS) RWY 6

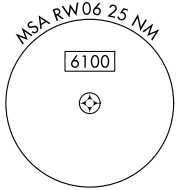
HICKORY RGNL (HKY)

RNP APCH-GPS.

MISSED APPROACH: Climb to 4100 direct PETIC and on track 043° to BZM VOR/DME and hold, continue climb-in-hold to 4100.

▽
▲ Rwy 6 helicopter visibility reduction below 3/4 SM NA.

ASOS 118.325	ATLANTA CENTER 125.15 263.0	HICKORY TOWER * 128.15 (CTAF) 0	GND CON 121.7	CLNC DEL 121.7	CLNC DEL 124.25 (When twr closed)
------------------------	---------------------------------------	---	-------------------------	--------------------------	--

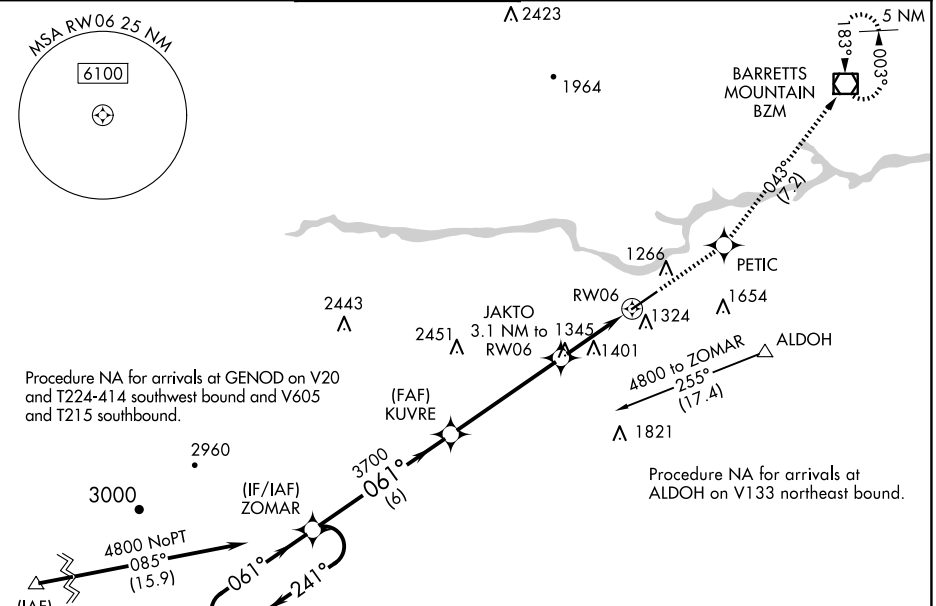


▲ 2423
• 1964
▲ 1266
▲ 1324
▲ 1654
▲ 1821



Procedure NA for arrivals at GENOD on V20 and T224-414 southwest bound and V605 and T215 southbound.

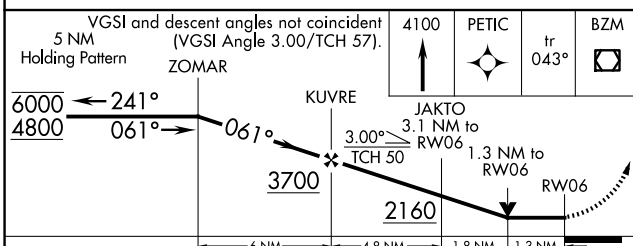
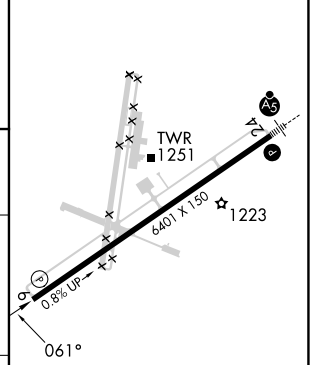
Procedure NA for arrivals at ALDHO on V133 northeast bound.



SE-2, 20 FEB 2025 to 20 MAR 2025

SE-2, 20 FEB 2025 to 20 MAR 2025

ELEV 1190	D TDZE 1152
-----------	--------------------



CATEGORY	A	B	C	D
LP MDA	1600-1	448 (500-1)	1600-1 3/8	448 (500-1 3/8)
LNAV MDA	1740-1	588 (600-1)	1740-1 3/4	588 (600-1 3/4)
CIRCLING	1740-1	550 (600-1)	2020-2 1/2 830 (900-2 1/2)	2040-2 3/4 850 (900-2 3/4)

HIRL Rwy 6-24 **0**
REIL Rwy 6