


LOC/DME I-CMI 109.1 Chan 28	APP CRS 319°	Rwy Idg TDZE Apt Elev	8101 750 755
--	------------------------	-----------------------------	---

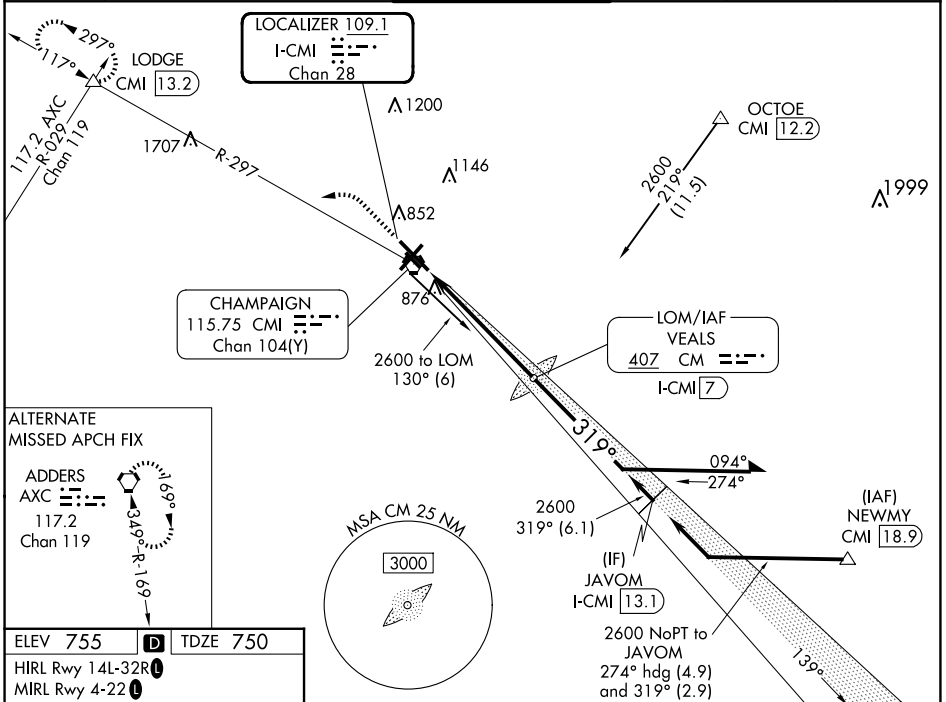
ILS or LOC RWY 32R

UNIVERSITY OF ILLINOIS/WILLARD (CMI)


▲ For inop ALS, increase S-LOC 32R Cat C and D visibility to RVR 6000.
ASR *RVR 1800 authorized with use of FD or AP or HUD to DA.

MALSR  MISSED APPROACH: Climb to 1200 then climbing left turn to 2800 on CMI VORTAC R-297 to LODGE INT/CMI VORTAC 13.2 DME and hold.


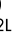
ATIS 124.85	CHAMPAIGN APP CON ★ 121.35 285.65 (319°-138°) 132.85 290.225 (139°-318°)	CHAMPAIGN TOWER ★ 120.4 (CTAF) 0 229.4	GND CON 121.8	CLNC DEL 128.75	UNICOM 122.95
-----------------------	--	--	-------------------------	---------------------------	-------------------------

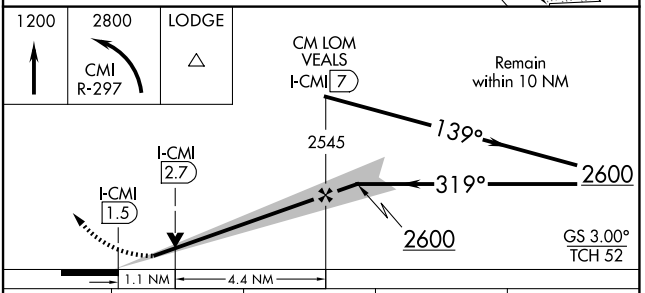
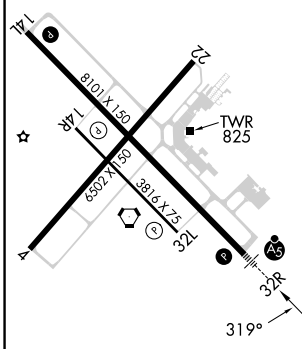


ALTERNATE MISSED APCH FIX

ADDERS AXC

117.2
Chan 119

R-199 (117.2)

ELEV 755	D	TDZE 750
HIRL Rwy 14L-32R 		
MIRL Rwy 4-22 		
MIRL Rwy 14R-32L		



CATEGORY	A	B	C	D
S-ILS 32R *	950/24 200 (200-½)			
S-LOC 32R	1160/24	410 (500-½)	1160/40	410 (500-¾)
C CIRCLING	1240-1	485 (500-1)	1500-2¼ 745 (800-2¼)	1500-2½ 745 (800-2½)

EC-3, 20 FEB 2025 to 20 MAR 2025

EC-3, 20 FEB 2025 to 20 MAR 2025