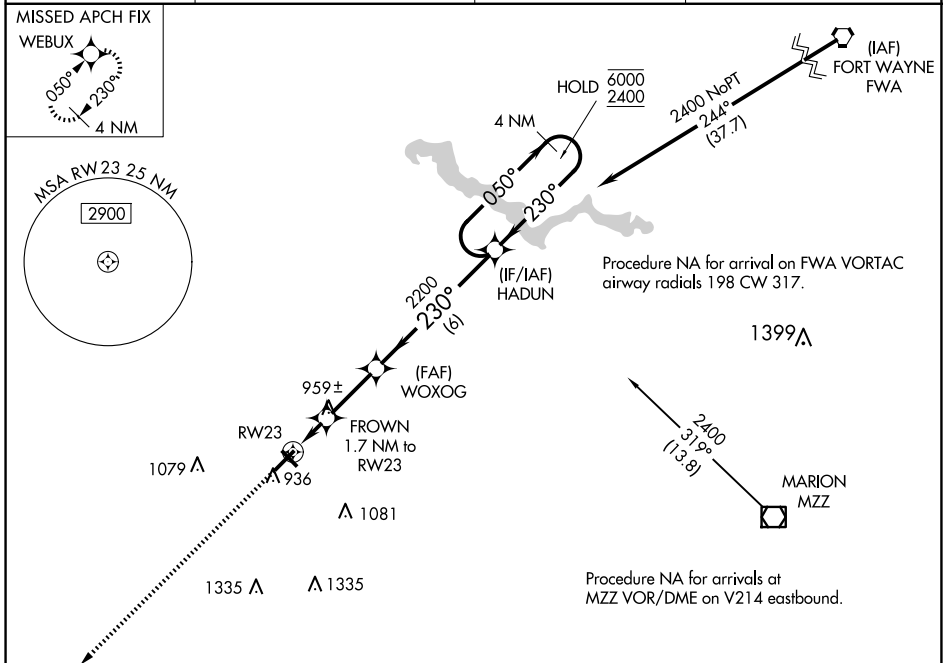


WAAS CH 40119 W23A	APP CRS 230°	Rwy Idg TDZE Apt Elev	6001 827 832
--	------------------------	-----------------------------	---

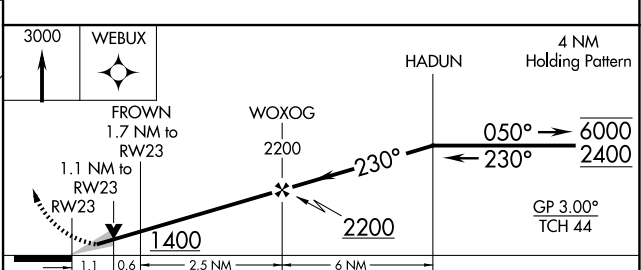
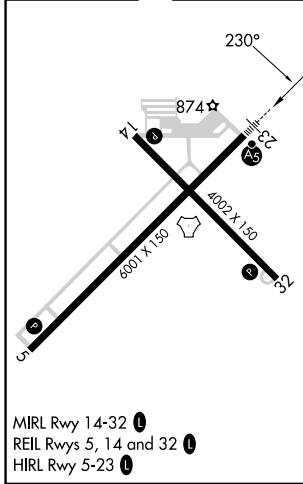
RNAV (GPS) RWY 23

KOKOMO MUNI (OKK)

RNP APCH - GPS.		MALSR	MISSED APPROACH: Climb to 3000 direct WEBUX and hold.
<p>▼ For uncompensated Baro-VNAV systems, LNAV/VNAV NA below -16°C or above 54°C.</p>			
AWOS-3PT 128.675	GRISSOM APP CON * 121.05 338.275	CLNC DEL 120.0	UNICOM 123.0 (CTAF) 0



ELEV 832	TDZE 827
----------	----------



CATEGORY	A	B	C	D
LPV DA		1027-½	200 (200-½)	
LNAV/VNAV DA		1224-⅝	397 (400-⅝)	
LNAV MDA	1220-½	393 (400-½)	1220-⅝	393 (400-⅝)
CIRCLING	1260-1 428 (500-1)	1300-1 468 (500-1)	1400-1½ 568 (600-1½)	1420-2 588 (600-2)

EC-2, 20 FEB 2025 to 20 MAR 2025

EC-2, 20 FEB 2025 to 20 MAR 2025