


WAAS CH <b>50310</b> <b>W01A</b>	APP CRS <b>007°</b>	Rwy Idg TDZE Apt Elev	<b>9001</b> <b>685</b> <b>690</b>
--	------------------------	-----------------------------	---

# RNAV (GPS) RWY 1

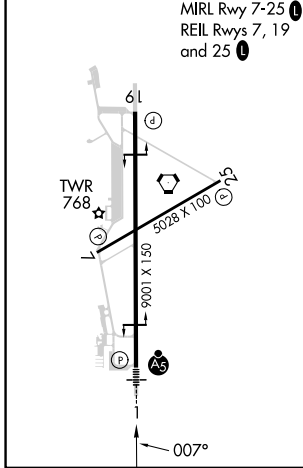
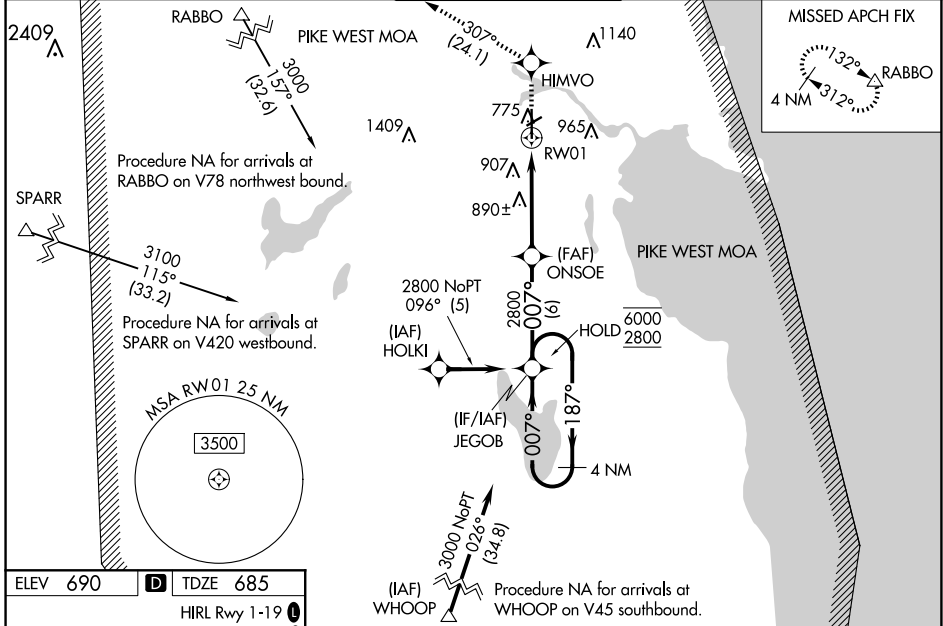
ALPENA COUNTY RGNL (APN)


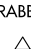
RNP APCH - GPS.

▼ For uncompensated Baro-VNAV systems, LNAV/VNAV NA below -16°C or above 54°C. Baro-VNAV and VDP NA when using PZQ altimeter setting. For inop ALS, increase LPV all Cats visibility to 7/8 SM, LNAV/VNAV all Cats visibility to 1 SM and LNAV Cats C/D visibility to 1 3/8 SM. When local altimeter setting not received, use PZQ altimeter setting and increase LPV DA to 1029 feet and all visibilities 1/8 SM; increase LNAV/VNAV DA to 1084 feet; increase all MDA's 60 feet. For inop ALS when using PZQ altimeter setting, increase LPV all Cats visibility to 1 SM.

MALSR  MISSED APPROACH: Climb to 3500 direct HIMVO and on track 307° to RABBO and hold.

ATIS <b>120.675 327.05</b>	ALPENA APP CON ★ <b>128.425 379.3</b>	ALPENA TOWER ★ <b>121.35 (CTAF) 318.1</b>	GND CON <b>121.9 275.8</b>	UNICOM <b>122.95</b>
-------------------------------	--	--	-------------------------------	-------------------------



4 NM Holding Pattern	JEGOB	ONSOE	3500	HIMVO	tr 307°	RABBO
6000 2800	←187° 007°→	007°	2800	↑		
GP 3.00° TCH 52			2800		1.3 NM to RW01	
CATEGORY	A	B	C	D		
LPV DA		974-1/2	289 (300-1/2)			
LNAV/VNAV DA		1029-5/8	344 (400-5/8)			
LNAV MDA	1160-1/2	475 (500-1/2)	1160-1	475 (500-1)		
<b>C</b> CIRCLING	1160-1	470 (500-1)	1220-1 1/2 530 (600-1 1/2)	1300-2 610 (700-2)		

EC-1, 20 FEB 2025 to 20 MAR 2025

EC-1, 20 FEB 2025 to 20 MAR 2025