

WAAS CH <b>82746</b>	APP CRS <b>067°</b>	Rwy Idg TDZE Apt Elev	<b>5031</b> <b>690</b> <b>690</b>
-------------------------	------------------------	-----------------------------	---

# RNAV (GPS) RWY 7

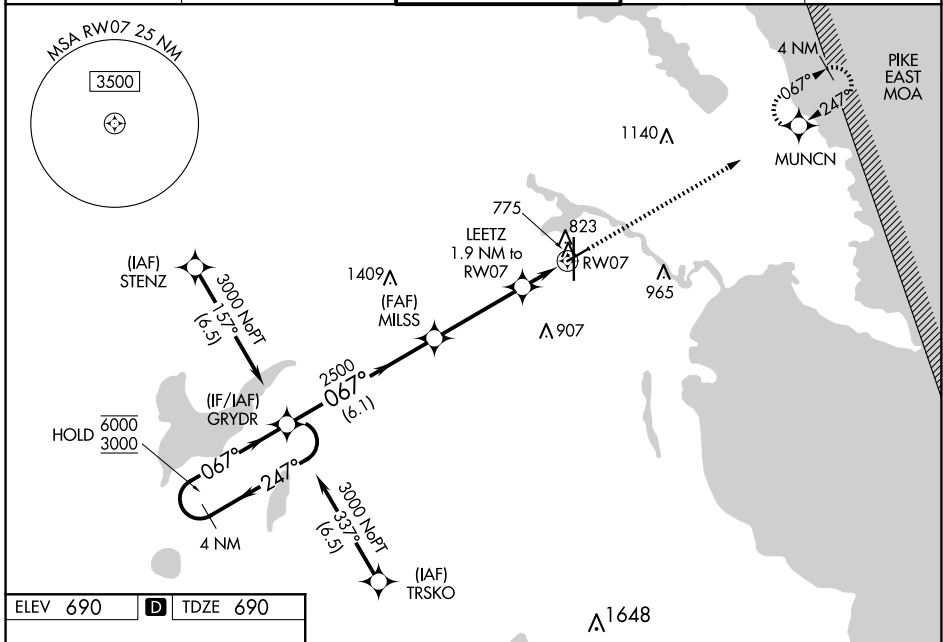
ALPENA COUNTY RGNL (APN)

RNP APCH - GPS.

**⚠** Baro-VNAV and VDP NA when using PZQ altimeter setting. Rwy 7 helicopter visibility reduction below 3/4 SM NA. For uncompensated Baro-VNAV systems, LNAV/VNAV NA below -18°C or above 54°C. When local altimeter setting not received, use PZQ altimeter setting and increase LPV DA to 1007 feet, increase LNAV/VNAV DA to 1039 feet; increase all MDAs 60 feet and LNAV visibility Cat C/D 1/4 SM.

**⚠** MISSED APPROACH: Climb to 3000 direct MUNCN and hold, continue climb-in-hold to 3000.

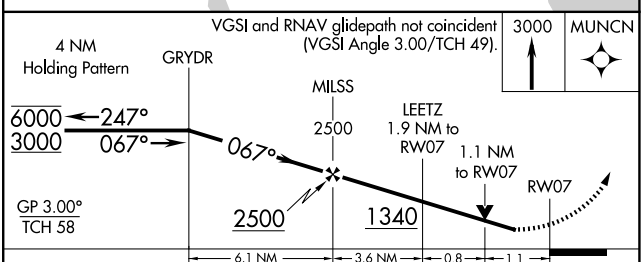
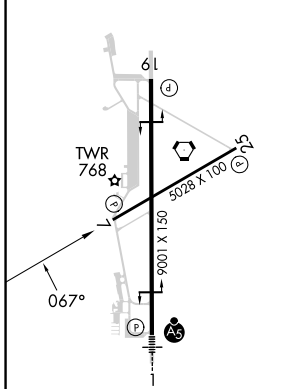
ATIS ★ <b>120.675 327.05</b>	ALPENA APP CON ★ <b>128.425 379.3</b>	ALPENA TOWER ★ <b>121.35 (CTAF) 318.1</b>	GND CON <b>121.9 275.8</b>	UNICOM <b>122.95</b>
---------------------------------	--	--	-------------------------------	-------------------------



EC-1, 20 FEB 2025 to 20 MAR 2025

EC-1, 20 FEB 2025 to 20 MAR 2025

ELEV 690	<b>D</b>	TDZE 690
----------	----------	----------



CATEGORY	A	B	C	D
LPV DA		952-1	262 (300-1)	
LNAV/VNAV DA		984-1	294 (300-1)	
LNAV MDA	1080-1	390 (400-1)	1080-1½	390 (400-1½)
CIRCLING	1140-1	450 (500-1)	1220-1½ 530 (600-1½)	1300-2 610 (700-2)

HIRL Rwy 1-19 **Ⓛ**  
MIRL Rwy 7-25 **Ⓛ**  
REIL Rws 7, 19 and 25 **Ⓛ**