

VORTAC APN <b>116.5</b> Chan <b>112</b>	APP CRS <b>175°</b>	Rwy Idg TDZE Apt Elev	<b>9001</b> <b>683</b> <b>690</b>
---	------------------------	-----------------------------	---

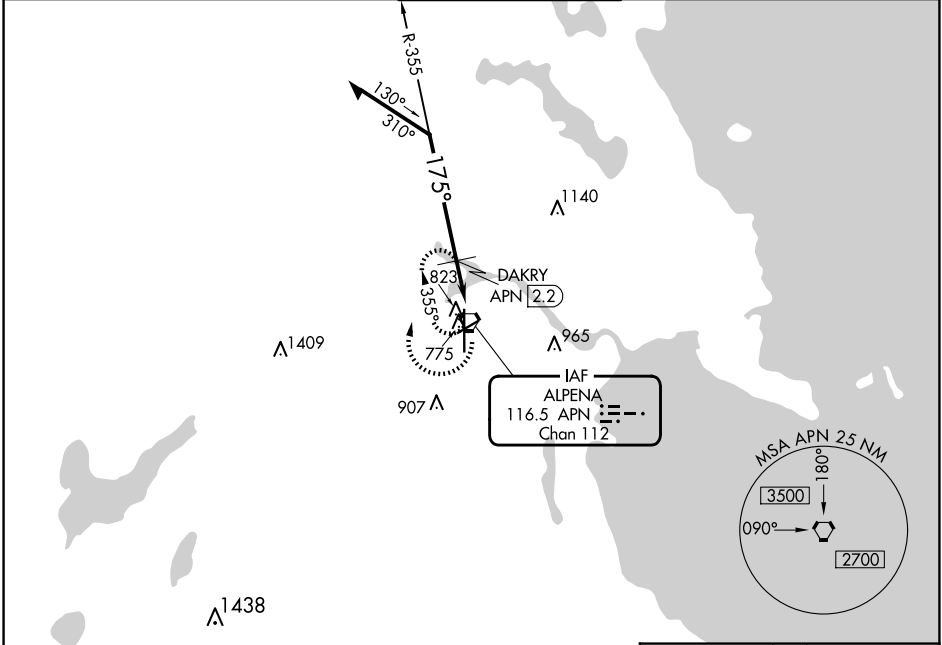
# VOR RWY 19

ALPENA COUNTY RGNL (APN)

**▽** Rwy 19 helicopter visibility reduction below 3/4 SM NA.

MISSED APPROACH: Climbing right turn to 2500 in APN VORTAC holding pattern.

ATIS <b>120.675 327.05</b>	ALPENA APP CON ★ <b>128.425 379.3</b>	ALPENA TOWER ★ <b>121.35 (CTAF) 0 318.1</b>	GND CON <b>121.9 275.8</b>	UNICOM <b>122.95</b>
-------------------------------	--	--	-------------------------------	-------------------------



Remain within 10 NM

2500 APN VORTAC

355°

175°

2500

DAKRY APN 2.2

APN 1.6

1340

3.18°

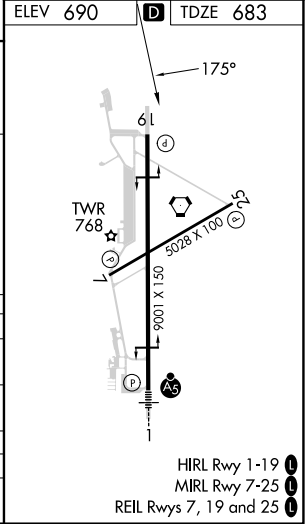
TCH 55

0.6 NM

1.2 NM

VGSI and descent angles not coincident (VGSI Angle 3.00/TCH 39).

CATEGORY	A	B	C	D
S-19	1340-1	657 (700-1)	1340-1 7/8	657 (700-1 7/8)
<b>C</b> CIRCLING	1340-1	650 (700-1)	1340-1 7/8 650 (700-1 7/8)	1340-2 650 (700-2)
DAKRY FIX MINIMUMS				
S-19	1100-1	417 (500-1)	1100-1 1/8	417 (500-1 1/8)
<b>C</b> CIRCLING	1140-1	450 (500-1)	1220-1 1/2 530 (600-1 1/2)	1280-2 590 (600-2)



EC-1, 20 FEB 2025 to 20 MAR 2025

EC-1, 20 FEB 2025 to 20 MAR 2025