

MAYPORT, FLORIDA

COPTER RNAV (GPS) RWY 5

WAAS CH 84778 W05A	APCH CRS 049°	Rwy ldg TDZE Arprt Elev	8001 12 15
--------------------------	------------------	-------------------------------	------------------

-(USN)

MAYPORT NS (ADM DAVID L MC DONALD FLD) (KNRB)

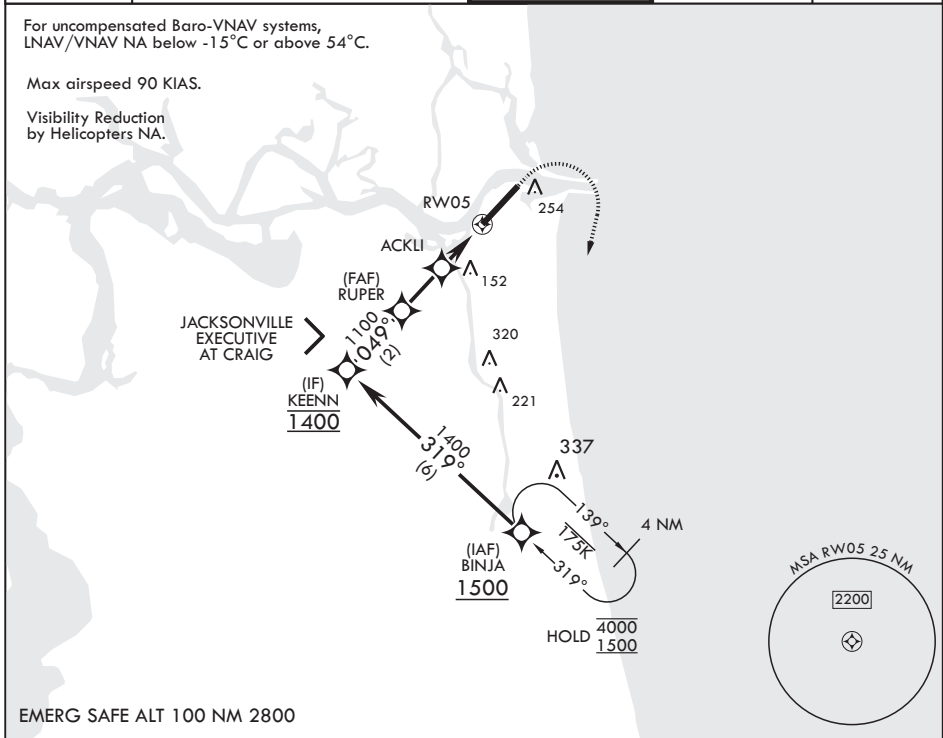
RNP APCH	MISSED APPROACH: Climb to 600 then climbing right turn to 1500 direct BINJA and hold.
RADAR required	
<p>⚠ * Circling not authorized at night when the VGSI is inop, unless the St. Johns River is clear of vessels from the mouth of Haulover Creek to St. Johns Point. ATC will advise aircraft on final approach if a conflict is present and coordinate a missed approach as required.</p>	

ATIS ★ 236.775	JACKSONVILLE APP CON/DEP CON 124.9 308.4	TOWER ★ 118.75 239.3 0	GND CON 126.5 233.7	ASR/PAR
-------------------	---	---------------------------	------------------------	---------

For uncompensated Baro-VNAV systems, LNAV/VNAV NA below -15°C or above 54°C.

Max airspeed 90 KIAS.

Visibility Reduction by Helicopters NA.



EMERG SAFE ALT 100 NM 2800

BINJA 1500		VGSI and RNAV glidepath not coincident (VGSI Angle 3.00/TCH 48).		600	1500	BINJA	ELEV 15	TDZE 12	
1500		KEENN	1400	049°	RUPER	1100	580	ACKLI	RWY 5
GP 3.30°		TCH 48		1.5 NM		1.5 NM			
CATEGORY	COPTER								
LPV DA	212-3/4	200	(200-3/4)						
LNAV/VNAV DA	280-7/8	268	(300-7/8)						
LNAV MDA	400-1	388	(400-1)						
CIRCLING*	560-1	545	(600-1)						

SE-3, 20 FEB 2025 to 20 MAR 2025

SE-3, 20 FEB 2025 to 20 MAR 2025

MAYPORT, FLORIDA

30°23'N - 81°25'W MAYPORT NS (ADM DAVID L MC DONALD FLD) (KNRB)

Amdt 1 05SEP24

COPTER RNAV (GPS) RWY 5