

MAYPORT, FLORIDA

COPTER TACAN Z RWY 5

TACAN NRB Chan 51	APCH CRS 055°	Rwy Ldg TDZE Arpt Elev 8001 12 15
-----------------------------	-------------------------	---

[USN]

MAYPORT NS (ADM DAVID L. MC DONALD FLD) (KNRB)

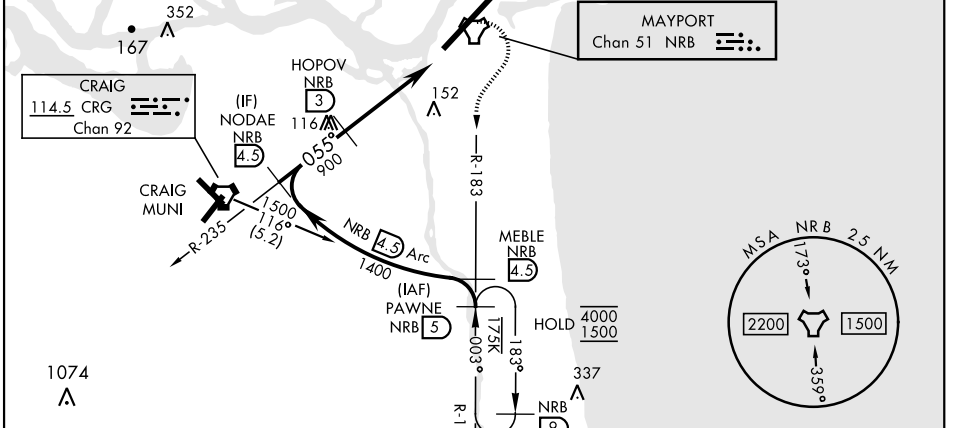
MISSED APPROACH: Climb to 500. Then climbing right turn to 1500 via NRB TACAN R-183 to PAWNE and hold.

ATIS ★ 236.775	JACKSONVILLE APP CON 124.9 308.4	TOWER ★ 118.75 239.30	GND CON 126.5 233.7	ASR/PAR
--------------------------	--	---------------------------------	-------------------------------	---------

CAUTION: When Rwy 23 VGSI inop, Circling to Rwy 23 NA at night.

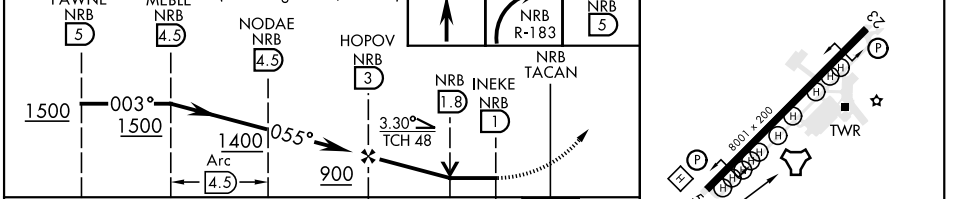
Max airspeed 90 KIAS

Final approach course is 317° from rwy centerline at 3000' from threshold.



EMERG SAFE ALT 100 NM 2800

PAWNE NRB 5	MEBLE NRB 4.5	NODAE NRB 4.5	HOPOV NRB 3	INEKE NRB 1.8	NRB TACAN	PAWNE NRB 5	ELEV 15	TDZE 12
-------------	---------------	---------------	-------------	---------------	-----------	-------------	---------	---------



CATEGORY	COPTER		
S-5	440-1/2	428	(500-1/2)
C CIRCLING	560-1	545	(600-1)

REIL Rwy 5-23
HIRL Rwy 5-23

MAYPORT, FLORIDA 30°23'N-81° 25'W MAYPORT NS (ADM DAVID L. MC DONALD FLD) (KNRB)

Amtd 5 05SEP24

COPTER TACAN Z RWY 5

SE-3, 20 FEB 2025 to 20 MAR 2025

SE-3, 20 FEB 2025 to 20 MAR 2025