

TACAN Y RWY 23

TACAN NRB Chan 51	APCH CRS 221°	Rwy Ldg TDZE Arpt Elev 8001 15 15
-----------------------------	-------------------------	--

[USN]

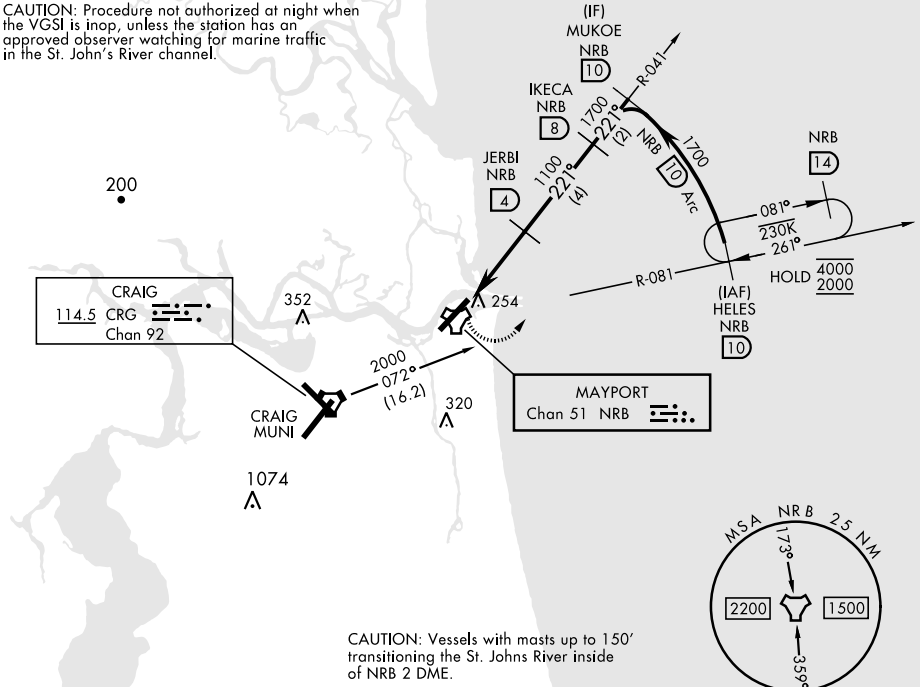
MAYPORT NS (ADM DAVID L. MC DONALD FLD) (KNRB)

<p>▼ Visibility reduction by helicopters NA.</p>	<p>MISSED APPROACH: Climbing left turn to 2000 via NRB TACAN R-081 to HELES and hold.</p>
--	---

<p>ATIS ★ 236.775</p>	<p>JACKSONVILLE APP CON 124.9 308.4</p>	<p>TOWER ★ 118.75 239.30</p>	<p>GND CON 126.5 233.7</p>	<p>ASR/PAR</p>
----------------------------------	--	---	---------------------------------------	----------------

CRG feeder route requires turn in hold.

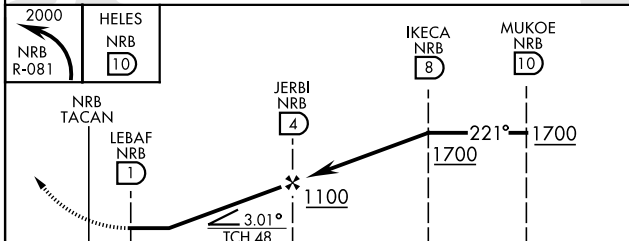
CAUTION: Procedure not authorized at night when the VGSI is inop, unless the station has an approved observer watching for marine traffic in the St. John's River channel.



SE-3, 20 FEB 2025 to 20 MAR 2025

SE-3, 20 FEB 2025 to 20 MAR 2025

EMERG SAFE ALT 100 NM 2800



ELEV	15	TDZE	15
------	----	------	----

REIL Rwy 5-23
HIRL Rwy 5-23

CATEGORY	A		B	C		D
S-23	520-1	505	(600-1)	520-1½	505	(600-1½)
CIRCLING	560-1	545	(600-1)	560-1½	545 (600-1½)	620-2 605 (700-2)

TACAN Y RWY 23