

TACAN Y RWY 5

TACAN NRB Chan 51	APCH CRS 055°	Rwy Ldg 8001 TDZE 12 Arpt Elev 15
-----------------------------	-------------------------	--

[USN] MAYPORT NS (ADM DAVID L. MC DONALD FLD) (KNRB)

▽ MISSED APPROACH: Climb to 500. Then climbing right turn to 3000 via NRB TACAN R-081 to BENG and hold, continue climb in hold to 3000.

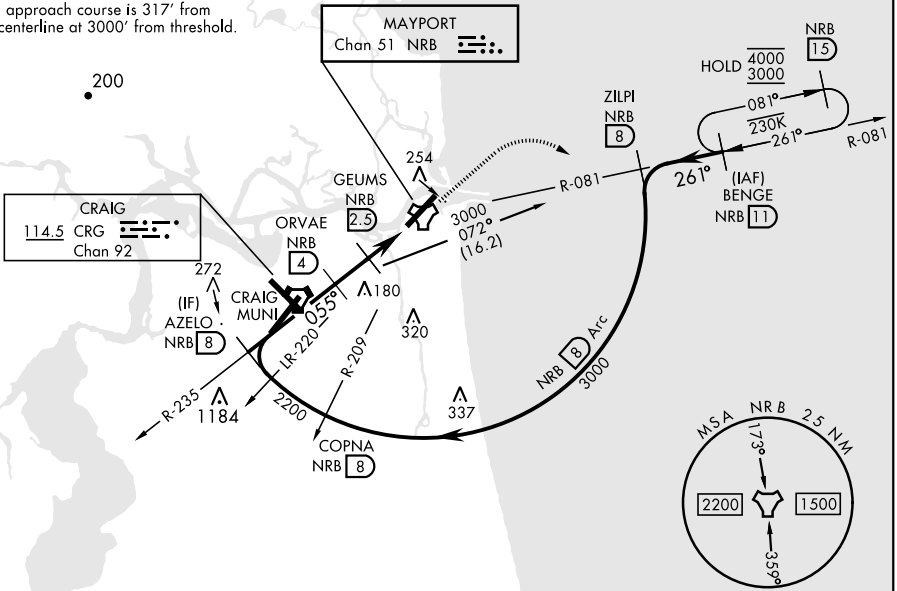
ATIS ★ 236.775	JACKSONVILLE APP CON 124.9 308.4	TOWER ★ 118.75 239.30	GND CON 126.5 233.7	ASR/PAR
--------------------------	--	---------------------------------	-------------------------------	---------

CAUTION: Circling not authorized to Rwy 23 at night when VGS1 inop on Rwy 23, unless the station has an approved observer watching for marine traffic in the St. John's River channel.

CAUTION: Intmed seg len 4 NM.

CRG feeder requires turn in hold.

Final approach course is 317' from rwy centerline at 3000' from threshold.

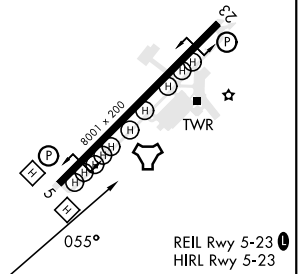


SE-3, 20 FEB 2025 to 20 MAR 2025

SE-3, 20 FEB 2025 to 20 MAR 2025

EMERG SAFE ALT 100 NM 2800

	ELEV 15		TDZE 12	
CATEGORY	A	B	C	D
S-5	440-1	428 (500-1)	440-1¼ 428 (500-1¼)	
Ⓞ CIRCLING	560-1	545 (600-1)	560-1½ 545 (600-1½)	620-2 605 (700-2)



TACAN Y RWY 5