

WAAS CH 50140 W28A	APP CRS 284°	Rwy Idg TDZE Apt Elev	4898 1603 1603
--	------------------------	-----------------------------	---

RNAV (GPS) RWY 28

HAZLETON RGNL (HZL)

RNP APCH.

▼ Rwy 28 helicopter visibility reduction below 3/4 SM NA. Inop table does not apply to LPV all Cats and LNAV Cats A/B. For uncompensated Baro-VNAV systems, LNAV/VNAV NA below -18°C or above 54°C.

MALS



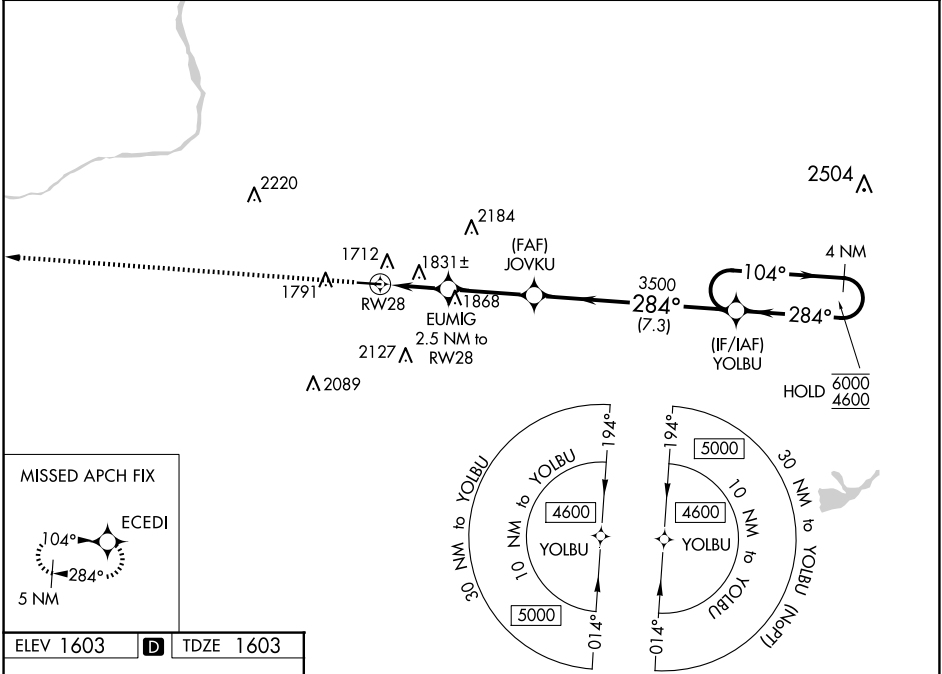
MISSED APPROACH:
Climb to 4400 direct ECEDI and hold.

AWOS-3
119.975

WILKES-BARRE APP CON
126.3 256.7

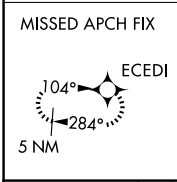
CLNC DEL
121.7

UNICOM
123.0 (CTAF) 0

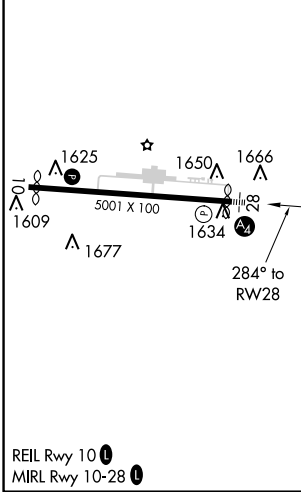


NE-4, 20 FEB 2025 to 20 MAR 2025

NE-4, 20 FEB 2025 to 20 MAR 2025



ELEV 1603 **D** TDZE 1603



	4400	ECEDI						
			EUMIG	JOVKU	YOLBU			
			2.5 NM to RWY 28	3500			4 NM Holding Pattern	
			*1.4 NM to RWY 28				104° → 6000	
							← 284° 4600	
								GP 3.17° TCH 40
CATEGORY		A	B	C	D			
LPV DA			1978-1	375 (400-1)				
LNAV/VNAV DA			2143-1¼	540 (600-1¼)				
LNAV MDA		2100-1	497 (500-1)	2100-1½	497 (500-1½)			
C CIRCLING		2140-1	2400-1	2480-2½	2520-3			
		537 (600-1)	797 (800-1)	877 (900-2½)	917 (1000-3)			