


WAAS CH <b>82105</b> <b>W18A</b>	APP CRS <b>176°</b>	Rwy Idg TDZE Apt Elev	<b>5150</b> <b>720</b> <b>720</b>
--	------------------------	-----------------------------	---

# RNAV (GPS) RWY 18

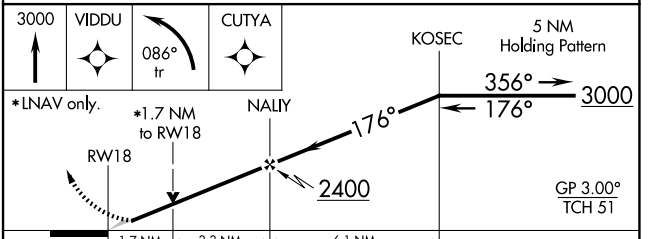
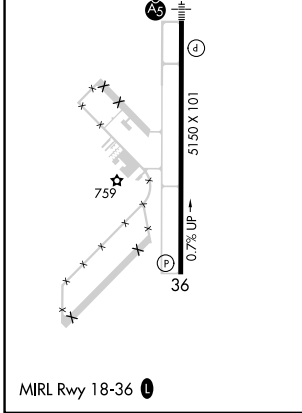
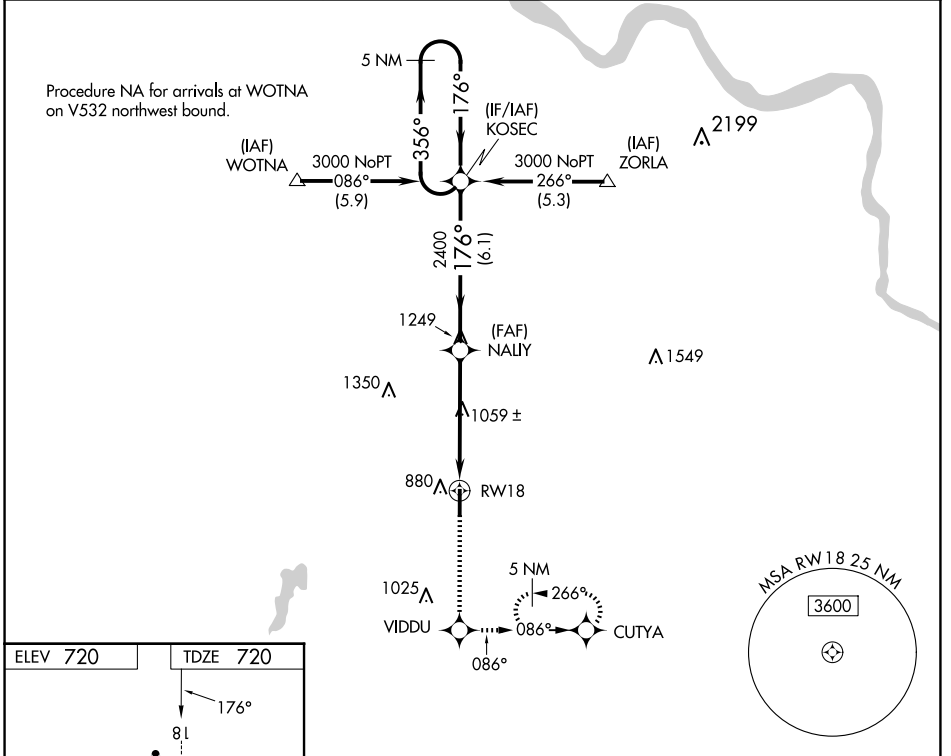
OKMULGEE RGNL/PAUL AND BETTY ABBOTT FLD (OKM)

**⚠** When local altimeter setting not received, use Tulsa Intl altimeter setting: Increase LPV DA to 1050 feet; increase all MDAs 80 feet and visibility Cat C ¼ SM. DME/DME RNP-0.3 NA. VDP NA with Tulsa Intl altimeter setting.

MALSR 

MISSED APPROACH: Climb to 3000 direct VIDDU and left turn via 086° track to CUTYA and hold, continue climb-in-hold to 3000.

AWOS-3PT <b>118.225</b>	TULSA APP CON <b>119.85 338.3</b>	UNICOM <b>123.0 (CTAF) 0</b>
----------------------------	--------------------------------------	---------------------------------



CATEGORY	A	B	C	D
LPV DA	970-½ 250 (300-½)			NA
LNAV MDA	1320-½ 600 (600-½)	1320-1 600 (600-1)		NA
<b>C</b> CIRCLING	1320-1 600 (600-1)	1340-1 620 (700-1)	1340-1¾ 620 (700-1¾)	NA

SC-1, 20 FEB 2025 to 20 MAR 2025

SC-1, 20 FEB 2025 to 20 MAR 2025