

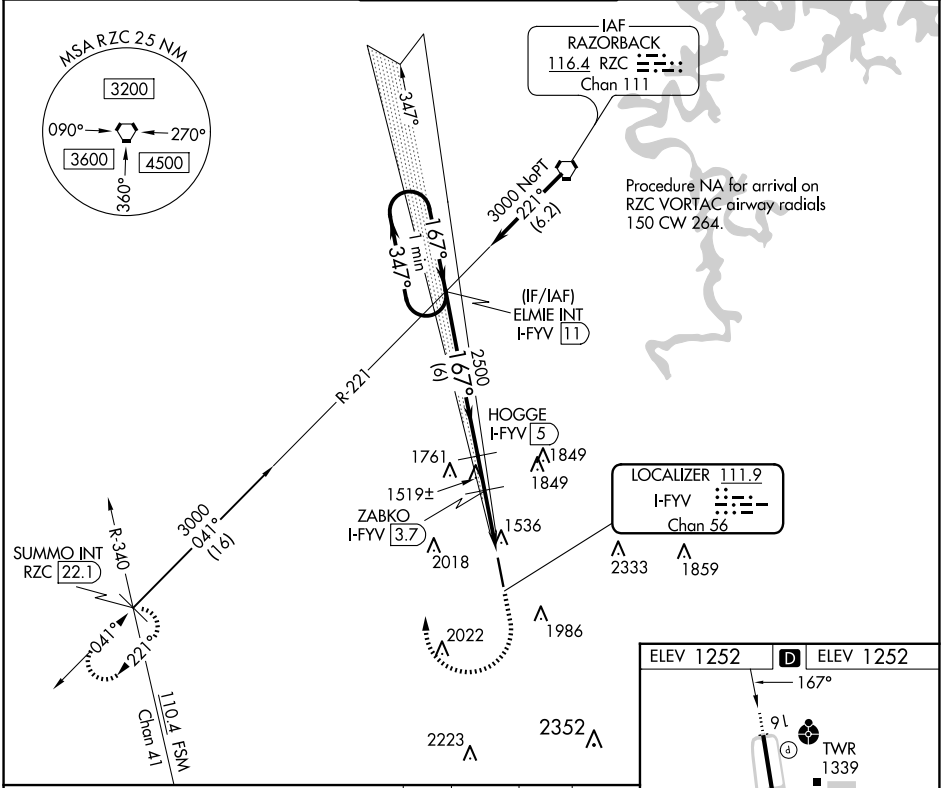
LOC/DME I-FYV <b>111.9</b> Chan <b>56</b>	APP CRS <b>167°</b>	Rwy Idg TDZE <b>1252</b> Apt Elev <b>1252</b>
---	------------------------	---

# LOC RWY 16

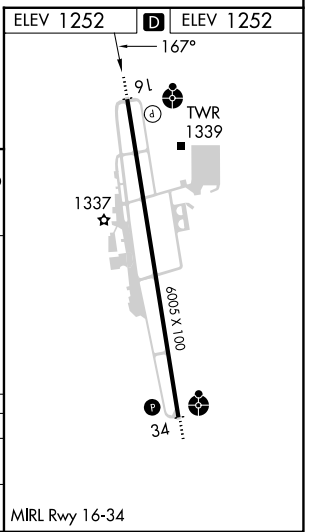
DRAKE FLD (FYV)

<b>⚠</b> Circling NA east of Rwy 16-34. Rwy 16 helicopter visibility reduction below 3/4 SM NA. DME required.	ODALS 	MISSED APPROACH: Climb to 2100 then climbing right turn to 4000 on heading 295° and RZC VORTAC R-221 to SUMMO INT/RZC 22.1 DME and hold.
---	-----------	--

ATIS <b>119.575</b>	RAZORBACK APP CON★ <b>121.0 244.575</b>	DRAKE TOWER★ <b>128.0 (CTAF) 371.9</b>	GND CON <b>121.8</b>	UNICOM <b>122.95</b>
------------------------	--	---	-------------------------	-------------------------



One Minute Holding Pattern	ELMIE INT I-FYV 11	HOGGE I-FYV 5	ZABKO I-FYV 3.7	I-FYV 2.7	I-FYV 1.2
3000	2500	2080	2100	4000	RZC R-221
← 347°	→ 167°	→ 167°	→ 3.00° TCH 50	hdg 295°	SUMMO INT
6 NM		1.3 NM	1	1.5	
CATEGORY	A	B	C	D	
S-LOC 16	1780-3/4	528 (600-3/4)	1780-13/8	528 (600-13/8)	
<b>C</b> CIRCLING	2000-1	748 (800-1)	2320-3 1068 (1100-3)	2340-3 1088 (1100-3)	



SC-1, 20 FEB 2025 to 20 MAR 2025

SC-1, 20 FEB 2025 to 20 MAR 2025