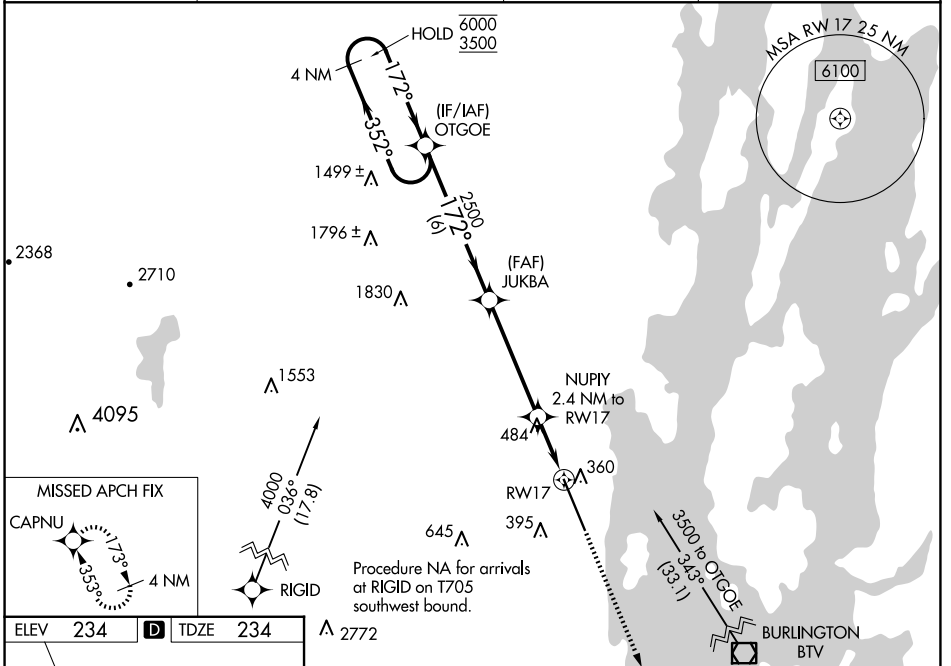


WAAS CH 40402 W17A	APP CRS 172°	Rwy Idg TDZE Apt Elev	11759 234 234
--	------------------------	-----------------------------	--

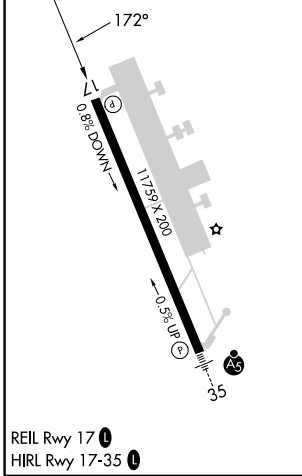
RNAV (GPS) RWY 17

PLATTSBURGH INTL (PBG)

RNP APCH - GPS		<p>⚠ Baro-VNAV and VDP NA when using BTV altimeter setting. When local altimeter not received, use BTV altimeter setting and increase LPV DA to 615 feet and all visibilities 1/8 SM. Increase LNAV/VNAV DA to 770 feet and all visibilities 1/8 SM. Increase all MDAs 60 feet and LNAV visibility Cat C/D/E 1/4 SM, and Circling visibility Cat C/D 1/4 SM. For uncompensated Baro-VNAV systems, LNAV/VNAV NA below -15°C or above 54°C.</p>	
ASOS 132.225	BURLINGTON APP CON * 121.1 278.8	CLNC DEL 121.85	UNICOM 122.7 (CTAF) 0



ELEV	234	D	TDZE	234
------	-----	----------	------	-----



4 NM Holding Pattern		OTGEO		JUKBA		NUPIY 2.4 NM to RWY 17		3000	CAPNU
6000 ← 352°		172° →		172°		2500		↑	⬠
3500				2500		1060			
GP 3.00°		TCH 54		6 NM		4.5 NM		1 NM	
								1.5 NM	
CATEGORY	A	B	C	D	E				
LPV DA	561-3/4		327 (400-3/4)						
LNAV/VNAV DA	716-1 3/8		482 (500-1 3/8)						
LNAV MDA	740-1	506 (600-1)	740-1 3/8	506 (600-1 3/8)					
CIRCLING	740-1	506 (600-1)	800-1 1/2	960-2 1/4	1100-3				
			566 (600-1 1/2)	726 (800-2 1/4)	866 (900-3)				

NE-2, 20 FEB 2025 to 20 MAR 2025

NE-2, 20 FEB 2025 to 20 MAR 2025